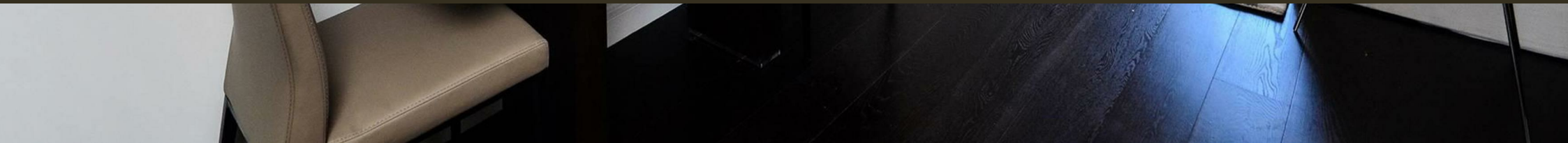




Moore House, 2 Gatliff Road
London SW1W

GARTON JONES.COM



Moore House, 2 Gatliff Road
London, SW1W

GARTON JONES.COM

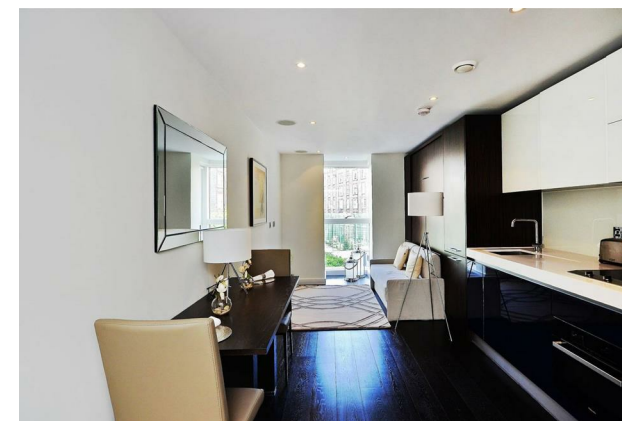
8 Gatliff Road
Chelsea
London
SW1W 8DP

Lettings:
+44 (0) 20 7730 5007
gws@gartonjones.com
www.gartonjones.com

£315 Per Week

A studio apartment to RENT of approx. 258.3sq.ft (24sq.m) in a secure development located close to the banks of the River Thames by Chelsea Bridge. This FURNISHED property is presented in good condition. OPEN PLAN studio/reception room, modern kitchen, luxury bathroom and wood flooring with underfloor heating. 24 HOUR CONCIERGE, LEISURE SUITE & GYM. Available via our office on-site here at Grosvenor Waterside (underneath Bramah House). There is also an on-site Sainsbury's Local, and coffee shop, Sloane Square and Victoria with its excellent transport links and Gatwick Express are within walking distance.

- 258.3 Sq.ft (24 sq.m)
- Fitted Pull Down Double Bed
- Studio Apartment
- Open Plan Living
- Modern Kitchen
- Luxury Bathroom
- 24 Hour Concierge
- Residents' Gym with Leisure Suite
- On-Site Sainsbury's Local and Coffee Shop
- Moments from Sloane Square and Victoria Station with and Close to Local Shops and Amenities



*Please note furniture may differ to that shown in the current photos.

GARTON JONES.COM



