



The Green, Tadworth



Offers in excess of

£525,000

Freehold

- 4 bedroom Townhouse
- Semi-rural location
- Lounge/dining room with balcony
- Modern kitchen/breakfast room
- Family bathroom and ensuite shower room
- Bar room
- Driveway

Set in a superb, semi-rural position within the leafy hamlet of Burgh Heath which is equidistance of Banstead Village and Tadworth Village, this impeccably presented four bedroom townhouse warrants immediate inspection to fully appreciate all it has to offer.

Set in a peaceful yet convenient location with easy access to the M25 and the surrounding towns yet just a stones' throw from open fields and country walks, this fine home really offers the best of both worlds.

When you couple the wonderful position it enjoys with its secluded rear garden it's the perfect family home. The property is within the catchment of the well regarded local schools, the large market towns of Epsom, Sutton and Reigate are nearby with mainline stations with regular services to London Victoria, Waterloo and London Bridge.



The property comprises an entrance hallway with doors to the spacious front aspect bar room, a bedroom which is currently used as a sitting room with doors opening to the rear garden and an ensuite shower room. On the first floor there is a spacious lounge/dining room with double doors opening to a balcony and a modern kitchen/breakfast room. On the second floor there are the remaining three bedrooms and the family bathroom. Outside to the front there is a driveway and to the rear is an attractive courtyard garden designed for easy maintenance.

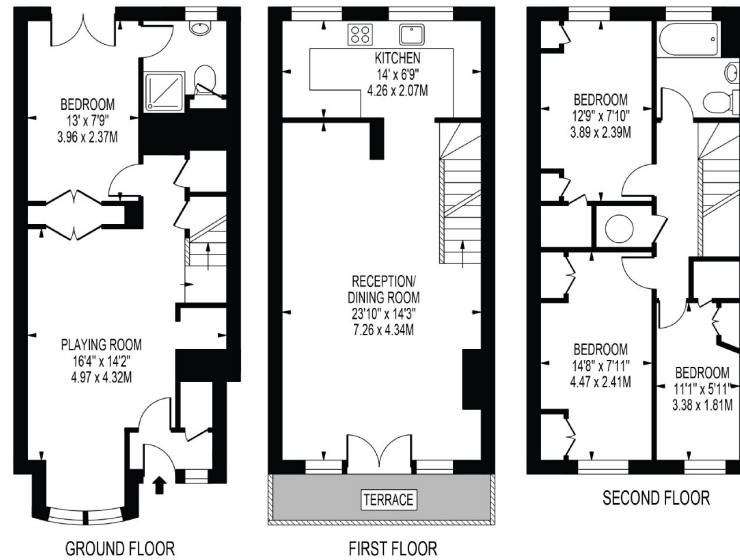
Local amenities include a large ASDA super-store as well as a useful local parade of shops. There are a variety of local excellent schools nearby. The property is within a short distance of the heart of Banstead Village with its excellent High Street shopping that includes a Waitrose Supermarket and the M&S Simply Food store. The open spaces of Epsom Downs provide walks and cycling routes. The A217 provides an arterial route to London and the M25 motorway at Reigate Hill (J8), and there are rail services at Kingswood Station some 0.8 Of a Mile away and Tattenham Corner, Banstead and Tadworth stations are also within close proximity. For the golf enthusiasts, there are four world-renowned golf clubs close by. This location is ideal for family walks, dog walks, cycling or jogging.





THE GREENBURGH HEATH

APPROXIMATE GROSS INTERNAL FLOOR AREA: 1331 SQ FT - 123.70 SQ M



FOR ILLUSTRATION PURPOSES ONLY

THIS FLOOR PLAN SHOULD BE USED AS A GENERAL OUTLINE FOR GUIDANCE ONLY AND DOES NOT CONSTITUTE IN WHOLE OR IN PART AN OFFER OR CONTRACT. ANY INTENDING PURCHASER OR LESSEE SHOULD SATISFY THEMSELVES BY INSPECTION, SEARCHES, ENQUIRIES AND FULL SURVEY AS TO THE CORRECTNESS OF EACH STATEMENT. ANY AREAS, MEASUREMENTS OR DISTANCES QUOTED ARE APPROXIMATE AND SHOULD NOT BE USED TO VALUE A PROPERTY OR BE THE BASIS OF ANY SALE OR LET.

Epsom Office

2 West Street
Epsom, Surrey KT18 7RG

T: 01372 745 850

Ewell Office

220 Chessington Road
West Ewell, Surrey KT19 9XA

T: 020 8394 1234

Stoneleigh Office

62 Stoneleigh Broadway
Stoneleigh, Surrey KT17 2HS

T: 020 8393 9411

Banstead Office

141 High Street Banstead,
Surrey SM7 2NS

T: 01737 333699



sales@thepersonalagent.co.uk | thepersonalagent.co.uk

Please Note: Whilst every attempt has been made to ensure the accuracy of the floorplans contained here, measurements of doors, windows and room areas are approximate and no responsibility is taken for any error, omission or mis-statement. These plans are for representation purposes only and should be used as such by and prospective purchaser. The services, systems and appliances listed in the specification have not been tested by The Personal Agent and no guarantee as to their operating ability or their efficiency can be given. All images and text used to advertise our properties are for the sole use of The Personal Agent Ltd.



