

FOR SALE



Victoria Street , Dover

2 Bedrooms, 1 Bathroom, Semi detached home

Asking Price Of £140,000


MARTIN&CO



Victoria Street , Dover

2 Bedrooms, 1 Bathroom

Asking Price Of £140,000

- Two bedrooms
- Garage
- Double glazed
- Central heating
- Perfect first home



BOOK A LIVE VIRTUAL VIEWING FOR THIS PROPERTY - LIVE Online Viewings from anywhere and any device !

Martin & Co are delighted to offer this delightful two bedroom, semi detached, family home in Victoria Street in Dover. The property has been well looked after and benefits from gas central heating and double glazed windows.

The property offers a modern, open plan kitchen with plenty of space for a cooker, washing machine and fridge/freezer. To the back of the kitchen are patio doors which lead into the spacious garden. The Lounge is a good size and offers plenty of natural light.

Upstairs you will find two bedrooms with one being a double and the second being a single with a built in wardrobe.

The bathroom consists of shower over bath with basin. In the next room is a separate toilet. The property is in an excellent location and also includes a GARAGE!

FRONT DOOR

ENTRANCE HALL

LOUNGE/DINER 26' 2" x 10' 0" (7.98m x 3.05m)

KITCHEN Measurements included in lounge

LANDING

BEDROOM 10' 0" x 9' 9" (3.05m x 2.97m)

BEDROOM 7' 4" x 5' 9" (2.24m x 1.75m)

BATHROOM

SEPERATE WC

GARDEN



GARAGE

PARKING

Whilst we endeavour to make our sales details accurate and reliable, if there is any point which is of particular importance to you, please contact the office and we will be pleased to check the information. Do so, particularly if contemplating travelling some distance to view the property.

All measurements have been taken using a sonic / laser tape measure and therefore, may be subject to a small margin of error. All Measurements are Approximate. The mention of any appliances and/or services within these Sales Particulars does not imply they are in full and efficient working order.

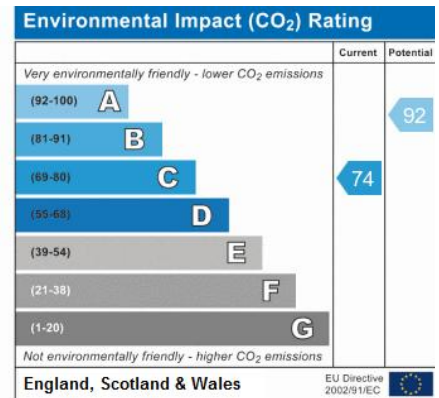
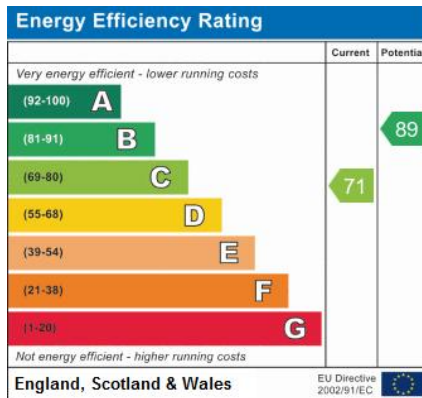
Our team of highly qualified Financial Consultants can provide you with up to the minute information on many of the rates available. To arrange an appointment,

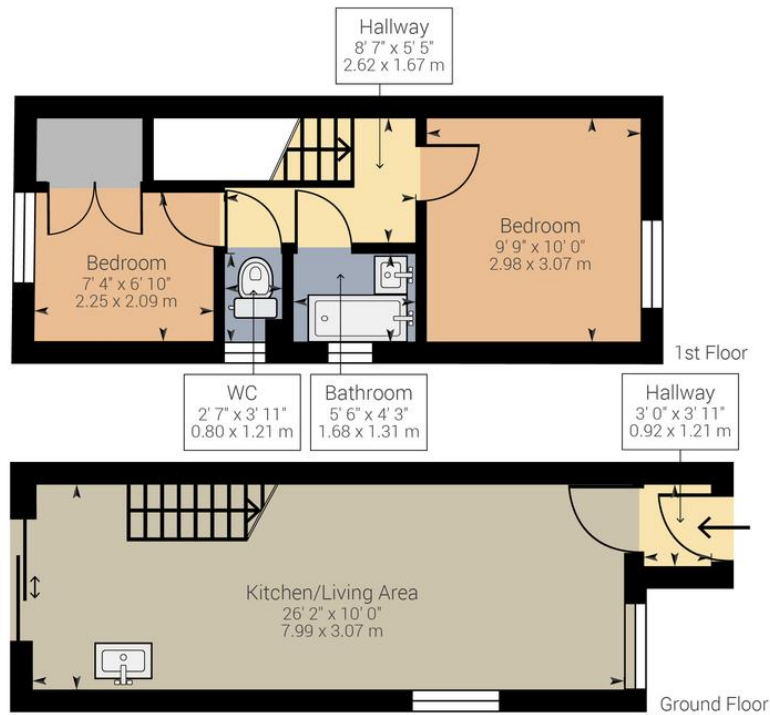
telephone this office. **YOUR HOME IS AT RISK IF YOU DO NOT KEEP UP REPAYMENTS ON A MORTGAGE OR OTHER LOANS SECURED ON IT.** Full written quotation available on request. A suitable life policy may be required. Loans subject to status. Minimum age 18

Intended Buyers will be asked to produce photographic ID as well as a recent proof of address and we would ask for your cooperation in order that there will be no delay in agreeing the sale (subject to contract)

We have made a virtual tour for this gorgeous home: check out the stunning 270-megapixel resolution tour by clicking the link on this page!







Approximate net internal area: 517.67 ft² / 48.09 m²

While every attempt has been made to ensure accuracy, all measurements are approximate, not to scale. This floor plan is for illustrative purpose only and should be used as such by any prospective tenant or purchaser.

Powered by Giraffe360

Martin & Co Dover

130 Sandgate Road • • Folkestone • CT20 2BW
T: 01304 213312 • E: dover@martinco.com

01304 213312
<http://www.martinco.com>



Accuracy: References to the Tenure of a Property are based on information supplied by the Seller. The Agent has not had sight of the title documents. A Buyer is advised to obtain verification from their Solicitor. Items shown in photographs including but not limited to carpets, fixtures and fittings are not included unless specifically mentioned within the sales particulars. They may however be available by separate negotiation. Buyers must check the availability of any property and make an appointment to view before embarking on any journey to see a property. No person in the employment of the agent has any authority to make any representation about the property, and accordingly any information given is entirely without responsibility on the part of the agents, sellers(s) or lessors(s). Any property particulars are not an offer or contract, nor for mpart of one. **Sonic / laser Tape:** Measurements taken using a sonic / laser tape measure may be subject to a small margin of error. **All Measurements:** All Measurements are Approximate. **Services Not tested:** The Agent has not tested any apparatus, equipment, fixtures and fittings or services and so cannot verify that they are in working order or fit for the purpose. A Buyer is advised to obtain verification from their Solicitor or Surveyor. **Mortgage & Financial Advice:** The Martin & Co mortgage service is provided by London & Country Mortgages the UK's largest Independent Fee-Free mortgage broker of Beazer House, Lower Bristol Road, Bath, BA2 3BA. Authorised and regulated by the Financial Conduct Authority. Their FCA number is 143002. YOUR HOME IS AT RISK IF YOU DO NOT KEEP UP REPAYMENTS ON A MORTGAGE OR OTHER LOANS SECURED ON IT. Full written quotation available on request. A suitable life policy may be required. Loans subject to status. Minimum age 18. If you are making a cash offer, we shall require written confirmation of the source and availability of your funds in order that our client may make an informed decision

