



Jubilee Street, London, , E1 3EH
£340,000

Elms Estates are delighted to be able to offer to the market For Sale this large One Bedroom Flat with a balcony.

Jubilee Street is ideally located within in easy reach of The City, Stepney Green (District Line) Tube Station and Whitechapel for Overground and Elizabeth lines, multiple bus routes in to the City and beyond and Queen Mary and Westfield University is only a short walk away. Brick Lane Market and Stepney Green Park are just a short walk away and offers shopping and tranquil recreation space additionally The River Thames is only 15mins walk away!

Set on the 2nd floor the Property offers spacious living accommodation with a good size lounge with access to the balcony and equally large bedroom. The flat has a well designed kitchen with huge amounts of storage. The property also benefits from new Double Glazing and heating throughout, this property is warm and bright.

For more information or to arrange a viewing please do not hesitate to call in and speak with one of our Property Consultants.



Lounge
16'0" x 11'5" (4.90 x 3.50)

Kitchen
11'1" x 9'10" (3.40 x 3.00)

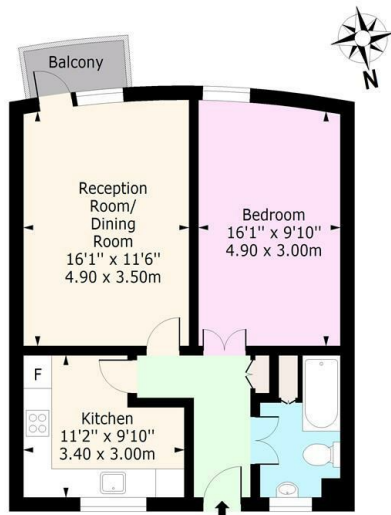
Bedroom
16'0" x 9'10" (4.90 x 3.00)

Bathroom

Balcony



**Longford House,
Jubilee Street,**
Approx. Gross Internal Area 599 Sq Ft - 55.65 Sq M (E xcluding Balcony)
Approx. Gross Internal Area 622 Sq Ft - 57.78 Sq M (Including Balcony)



First Floor
Floor Area 599 Sq Ft - 55.65 Sq M

For Illustration Purposes Only - Not To Scale
www.lpaplus.com

Energy Efficiency Rating		Environmental Impact (CO ₂) Rating	
Current	Potential	Current	Potential
<p>Very energy efficient - lower running costs</p> <p>(92 plus) A</p> <p>(81-91) B</p> <p>(69-80) C</p> <p>(55-68) D</p> <p>(39-54) E</p> <p>(21-38) F</p> <p>(1-20) G</p> <p>Not energy efficient - higher running costs</p>			
63	75	63	77
<p>England & Wales</p> <p>EU Directive 2002/91/EC</p>		<p>England & Wales</p> <p>EU Directive 2002/91/EC</p>	