

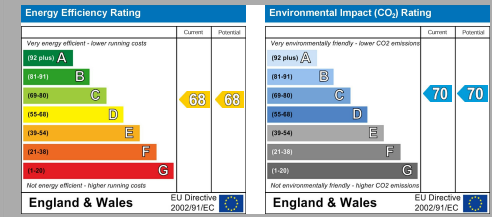


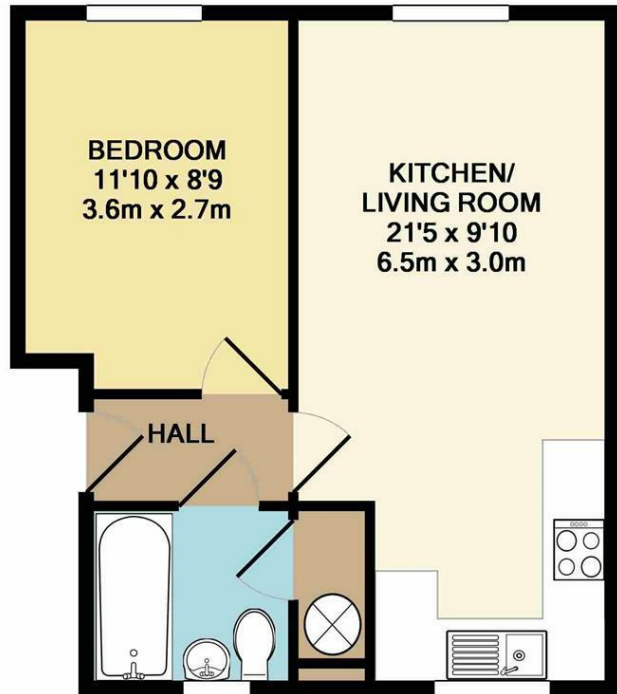
22 Gatehouse Court, Taunton, Somerset, TA1 1RX

robert  
cooney



- Central location
- Double bedroom
- Electric heating
- Double glazing





TOTAL APPROX. FLOOR AREA 380 SQ.FT. (35.3 SQ.M.)

Whilst every attempt has been made to ensure the accuracy of the floor plan contained here, measurements of doors, windows, rooms and any other items are approximate and no responsibility is taken for any error, omission, or mis-statement. This plan is for illustrative purposes only and should not be relied upon by any prospective purchaser. The services, systems and appliances shown have not been tested and no guarantee as to their operability or efficiency can be given.

Made with Metropix ©2017



Viewings strictly by appointment with the agents:

**Robert Cooney Lettings**  
 10 Hammet Street, Taunton,  
 Somerset TA1 1RZ  
 Telephone: 01823 230321  
 Email: [lettings@robertcooney.co.uk](mailto:lettings@robertcooney.co.uk)  
 Website: [www.robertcooney.co.uk](http://www.robertcooney.co.uk)

