



Jordanfishwick

ANCOATS
Anita Street



Anita Street, Ancoats M4 5DU

Price £290,000



The Property

Online Video...<https://youtu.be/3MtGrxTic68>

RARE OPPORTUNITY. Jordan Fishwick are pleased to present this stunning THREE BEDROOM first floor apartment for sale on the picturesque Anita Street in Ancoats a historic row that's one of a kind in the city centre. Lovingly refurbished throughout, the property is a rare find, with fireplaces, exposed brick and a large open-plan kitchen and living room area. It boasts the addition of a tiled ensuite to the second double bedroom and a high spec modern kitchen with a worktop made from a reclaimed laboratory bench. The property has a patio garden at the rear with space for two cars to park, and is minutes from vibrant foodie destination Cutting Room Square. Ancoats is listed as one of the Best

Places to Live in the UK' (The Times, 2019) and Anita Street's pristine terraced housing often features in TV filming and the media, showcasing the quiet pedestrianised walkway down the middle. Piccadilly and Victoria stations are each a fifteen-minute walk from the property.

Directions

Ancoats is a thriving suburb of the city with the trendy Northern Quarter on its doorstep and its seen as one of the hottest spots in town to live and work in.



- Three Bedroom Maisonette
- First Floor
- Sought After Street
- Fantastic Location
- Parking / Patio Garden
- Beautiful Conversion
- No Ongoing Chain

Postcode - M4 5DU

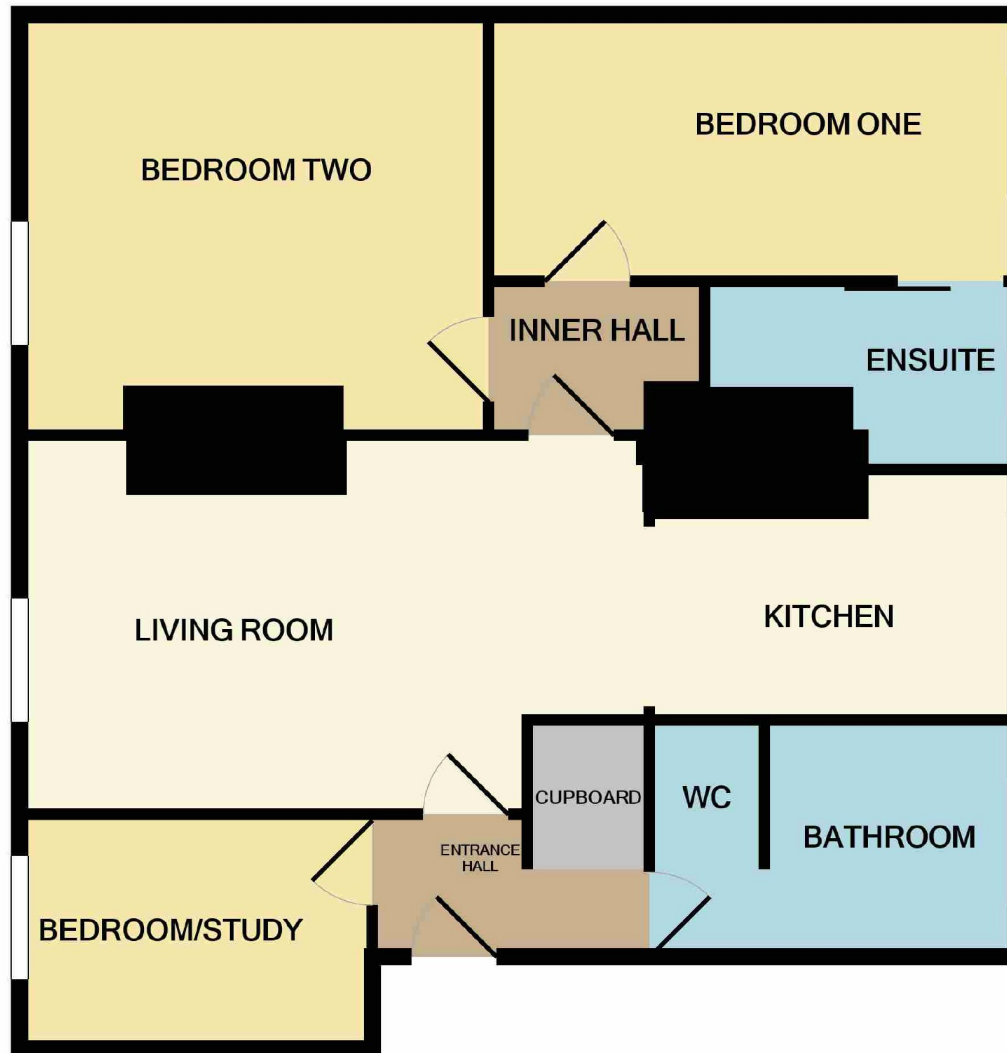
EPC Rating - C

Floor Area - 699 sq ft

Local Authority - Manchester Council

Council Tax - Band A





Measurements are approximate. Not to scale. Illustrative purposes only
 Made with Metropix ©2020



These particulars are believed to be accurate but they are not guaranteed and do not form a contract. Neither Jordan Fishwick nor the vendor or lessor accept any responsibility in respect of these particulars, which are not intended to be statements or representations of fact and any intending purchaser or lessee must satisfy himself by inspection or otherwise as to the correctness of each of the statements contained in these particulars. Any floorplans on this brochure are for illustrative purposes only and are not necessarily to scale.

Offices also at:
 Chorlton | Didsbury | Disley | Glossop | Hale | Macclesfield | Manchester | Sale | Wilmslow | Withington

68 The Arches, Whitworth Street West, Manchester, M1

0161 833 9499

manchester@jordanfishwick.co.uk

www.jordanfishwick.co.uk