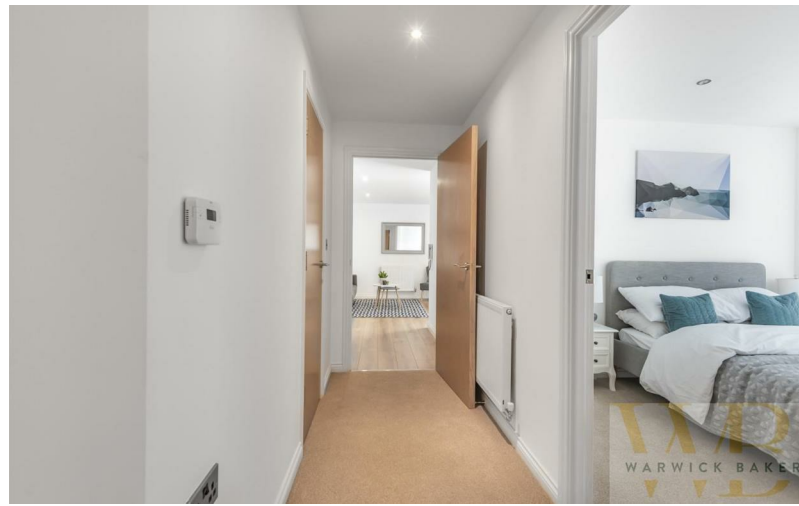




PHASE 3 - WEST TOWER - 57 MARINER POINT Brighton

Deed 1, Chatham Dr, Coe 10M2 011





PHASE 3 - WEST TOWER - 57 MARINER POINT Brighton Road | | Shoreham-

£360,000

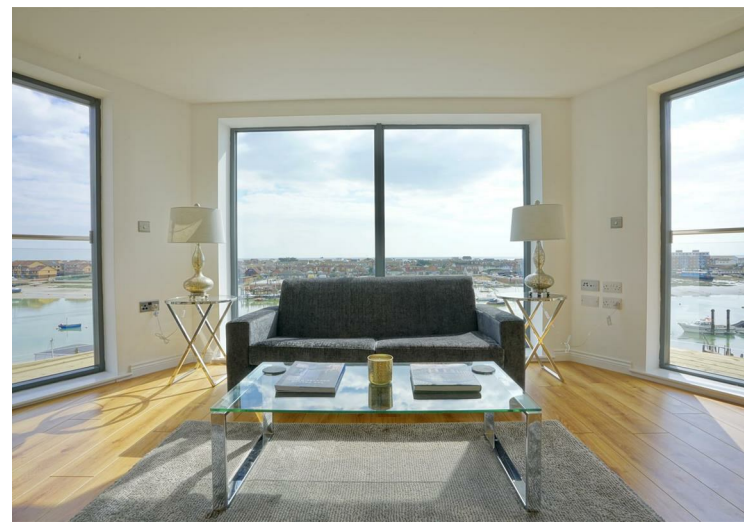
PHASE 3 - WEST TOWER - VIEWS OF SHOREHAM, THE RIVER AND FOOTBRIDGE

FISHERMAN'S KNOT 730 SQ FT - 2 BEDROOMS - SECOND FLOOR - EASTERLY ASPECT

HELP TO BUY SCHEME AVAILABLE - CALL NOW FOR MORE DETAILS 01273 461144

*** PLEASE NOTE THE PHOTOS ARE OF THE SHOW FLAT AND MAY NOT BE THIS PARTICULAR PLOT ***

- LUXURY NEW BUILD APARTMENT
- DIRECT RIVER VIEWS
- MODERN CONTEMPORARY FINISH
- 10 YEAR GUARANTEE
- BALCONY
- CLOSE TO MAINLINE RAILWAY STATION
- AUDIO ENTRY SYSTEM
- LIFT TO ALL FLOORS
- AVAILABLE NIOW
- HELP TO BUY SCHEME AVAILABLE



BRITISH PROPERTY AWARDS 2018-2019 **PROPERTY AWARDS** REQUEST AN AWARD WINNING VALUATION **WARWICK BAKER** **PROPERTY EXPERTS** TO SEE HOW MUCH YOUR PROPERTY IS WORTH 01273 461144

Help to Buy

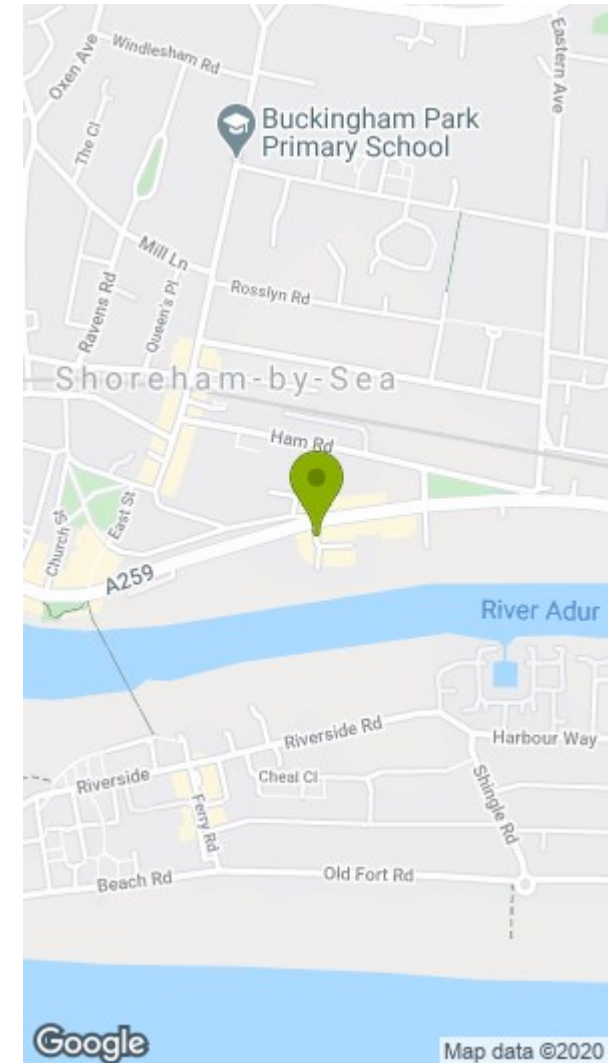
Fisherman's Knot
730 sq' (67.8m²)

- Bedroom 1: 16'10" x 10'0" (5.1m x 3.0m)
- Bedroom 2: 14'4" x 8'0" (4.35m x 2.6m)
- Living/Kitchen/Dining: 14'4" x 14'0" (4.35m x 4.25m)
- Bathroom: 8'0" x 5'0" (2.4m x 1.7m)

Sailors Coil
741 sq' (68.9m²)

- Bedroom 1: 13'1" x 9'6" (4.0m x 2.9m)
- Bedroom 2: 12'7" x 9'0" (3.85m x 2.75m)
- Living/Kitchen/Dining: 22'3" x 13'0" (6.8m x 4.2m)
- Bathroom: 8'0" x 5'0" (2.4m x 1.7m)

Measurements Approximate And For Display Purposes Only



Disclaimer

* These particulars are intended to give a fair and substantially correct overall description for the guidance of intending purchasers and do not constitute an offer or part of a contract. Prospective purchasers and/or lessees ought to seek their own independent professional advice.

* All descriptions, dimensions, areas, references to condition and necessary permissions for use and occupation and other details are given in good faith and are believed to be correct, but any intending purchasers should not rely on them as statements or representations of fact, but must satisfy themselves by inspection or otherwise as to the correctness of each of them.

* All measurements are approximate

Energy Efficiency Rating		Environmental Impact (CO ₂) Rating	
Current	Potential	Current	Potential
Very energy efficient - lower running costs (92 plus) A		Very environmentally friendly - lower CO ₂ emissions (92 plus) A	
(81-91) B		(81-91) B	
(69-80) C		(69-80) C	
(54-68) D		(54-68) D	
(39-54) E		(39-54) E	
(21-38) F		(21-38) F	
(1-20) G		(1-20) G	
Not energy efficient - higher running costs		Not environmentally friendly - higher CO ₂ emissions	
England & Wales	EU Directive 2002/91/EC	England & Wales	EU Directive 2002/91/EC