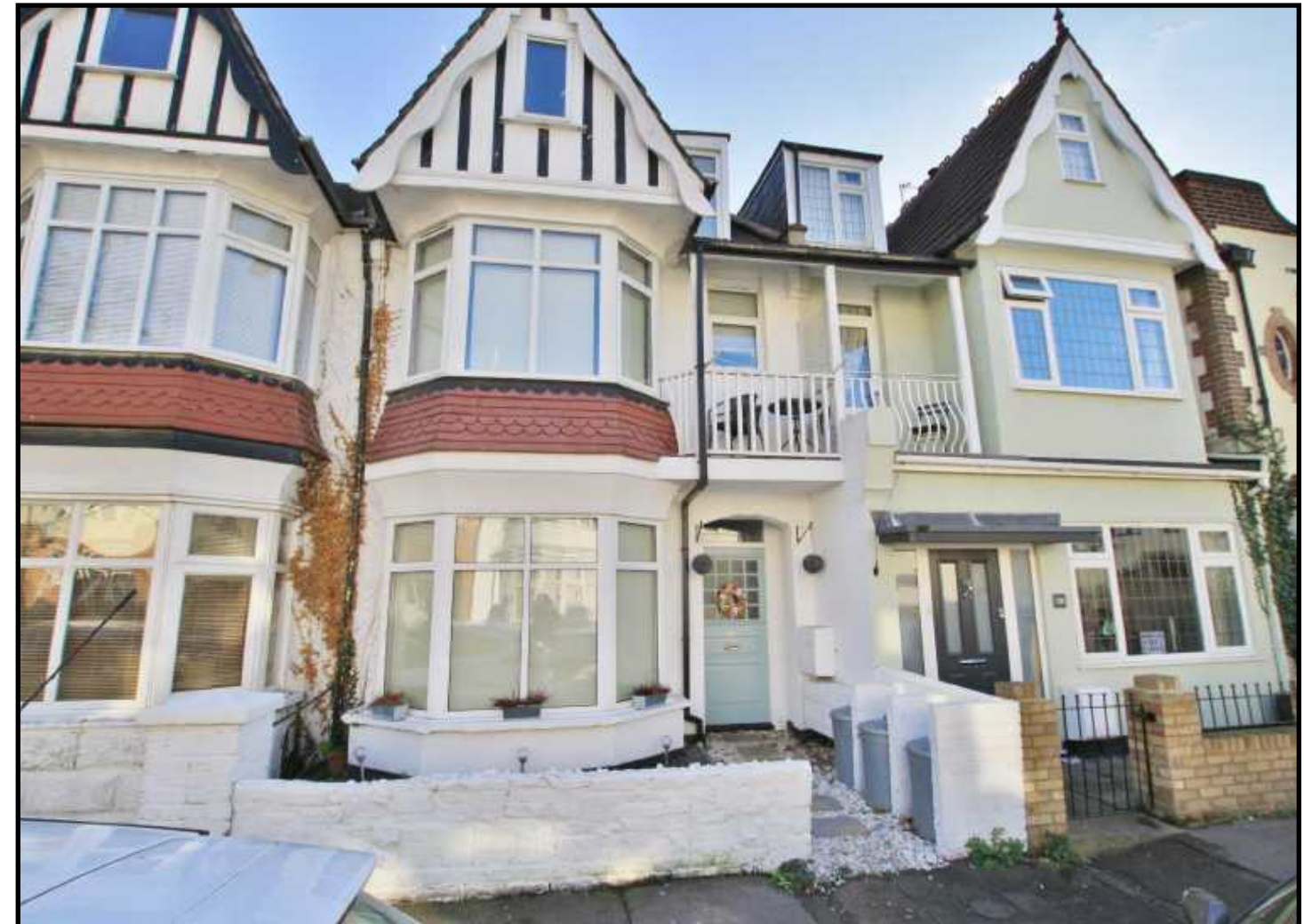
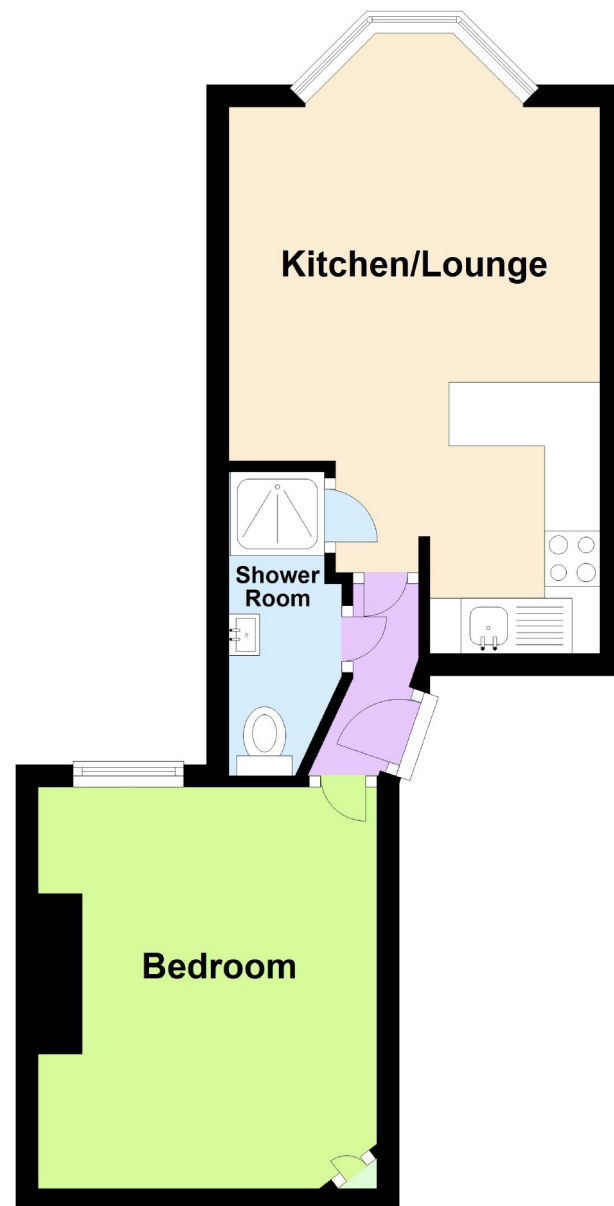


First Floor



Pall Mall, Leigh-On-Sea Offers in excess of £150,000

**** SHARE OF FREEHOLD ****

A FIRST FLOOR FLAT LOCATED IN CENTRAL LEIGH, CLOSE TO LEIGH BROADWAY AND ITS MANY FACILITIES.

THIS FLAT HAS RECENTLY HAD A NEW KITCHEN, BATHROOM AND BEEN REDECORATED THROUGHOUT TO INCLUDE NEW FLOORING. THIS FLAT IS FREEHOLD AND HAS A NEW LEASE OF NEARLY 1000 YEARS, HAS NO SERVICE CHARGE AND INSURANCE COSTS JUST £210 PER ANNUM. KEYS ARE HELD FOR AN IMMEDIATE VIEWING

You may download, store and use the material for your own personal use and research. You may not republish, retransmit, redistribute or otherwise make the material available to any party or make the same available on any website, online service or bulletin board of your own or of any other party or make the same available in hard copy or in any other media without the website owner's express prior written consent. The website owner's copyright must remain on all reproductions of material taken from this website.

**Call to arrange your viewing today
01702 710555**

Energy Efficiency Rating		Current	Potential
<i>Very energy efficient - lower running costs</i>			
(92-100) A			
(81-91) B			
(69-80) C			
(55-68) D			56
(39-54) E			
(21-38) F	25		
(1-20) G			
<i>Not energy efficient - higher running costs</i>			
England & Wales		EU Directive 2002/91/EC	



units to both ground and eye level with new complimentary work surfaces, space cooker space and plumbing for washing machine, new sink unit with mixer taps



Main Features

- ONE BEDROOM* FIRST FLOOR* NEW KITCHEN* NEW BATHROOM* DOUBLE GLAZED* NO ONWARD CHAIN* CLOSE TO BROADWAY* FREEHOLD

Communal door
To communal hall, stairs to first floor, further street door to flat

Hallway
Doors to accommodation, access to loft

Bedroom 11'9" x 10'9" (3.58m x 3.28m)
Double glazed window to rear aspect, fitted wardrobe, electric radiator, new flooring and redecorated

Shower room
Double glazed window to flank, shower cubicle, low flush w/c, pedestal wash hand basin, part tiled splash backs, newly decorated and flooring

Kitchen/Lounge 19'4" x 11' (5.89m x 3.35m)
Double glazed window to rear, new electric radiator, newly fitted kitchen



Call to arrange your viewing today
01702 710555