

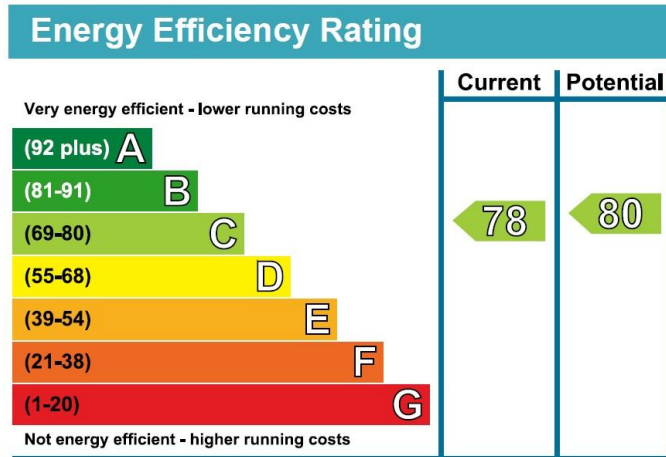


## DISCOVERY DOCK EAST , 3 SOUTH QUAY SQUARE, E14

£2,500 pcm

This apartment is set on the 17th Floor overlooking South Dock and the Canary Wharf Skyline and to the rear views over South Quay. The Master bedroom has an En suite and the Kitchen is semi enclosed from the reception room. Concierge, Pool and Gym

- North/South Dock Views
- Balcony
- Concierge
- Pool and Gym
- Modern furniture



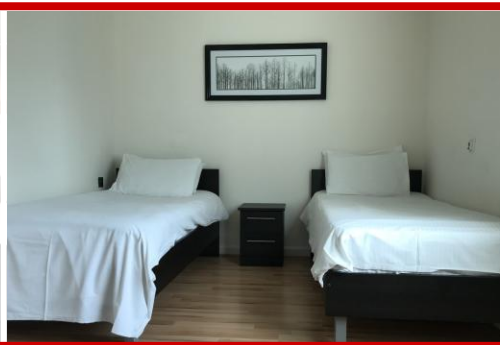
Current rating **83**



Higher CO<sub>2</sub> emissions

Lower CO<sub>2</sub> emissions

Potential rating **85**



## 655 Commercial Road, London, E14 7LW

**Disclaimer**  
 River Habitat, their clients and any joint agents give notice that: 1. They have no authority to make or give any representations or warranties in relation to the property. These particulars do not form any part of an offer or contract and must not be relied upon as statements or representations of fact. 2. Any areas, measurements or distances are approximate. The text, photographs and plans are for guidance only and are not necessarily a complete representation of the property. Photographs are taken using a wide angle lens camera. 3. It should not be assumed that the property has all necessary planning, building regulations or other consents and River Habitat have not tested any services, equipment or other facilities. Purchasers must satisfy themselves by inspection or otherwise