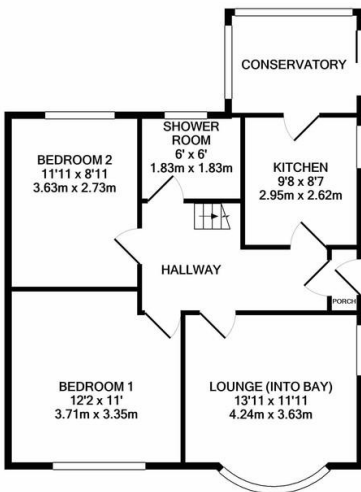


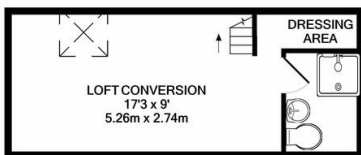


Property Summary

A spacious and extended two bedroom semi detached bungalow situated on the Oadby/Wigston border. The property comprises entrance hall, two bedrooms, shower room, large living room, kitchen and conservatory. To the first floor there is a loft conversion with shower room, the property also has a detached garage. The property is double glazed throughout and benefits from off road parking for one car and a low maintenance paved and pebbled garden to the rear and lawned front with plant and shrubs throughout.



GROUND FLOOR
APPROX. FLOOR
AREA 645 SQ.FT.
(59.9 SQ.M.)

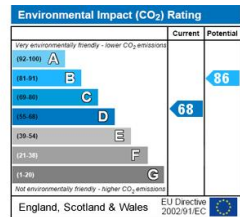
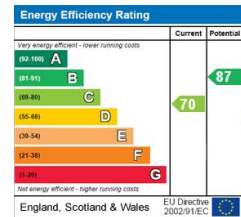


1ST FLOOR
APPROX. FLOOR
AREA 235 SQ.FT.
(21.9 SQ.M.)

PHILLIPS GEORGE LTD

TOTAL APPROX. FLOOR AREA 880 SQ.FT. (81.7 SQ.M.)

Whilst every attempt has been made to ensure the accuracy of the floor plan contained here, measurements of doors, windows, rooms and any other items are approximate and no responsibility is taken for any error, omission, or mis-statement. This plan is for illustrative purposes only and should be used as such by any prospective purchaser. The services, systems and appliances shown have not been tested and no guarantee as to their operability or efficiency can be given.
Made with Metropix ©2020



- Corner Plot
- Garage
- Driveway
- Semi-Detached
- Bungalow
- Converted Loft Space
- Two Bedrooms
- Two Shower Rooms

phillips george | sales & lettings

Agents Note: Whilst every care has been taken to prepare these sales particulars, they are for guidance purposes only. All measurements are approximate and for general guidance purposes only and whilst every care has been taken to ensure their accuracy, they should not be relied upon and potential buyers are advised to recheck the measurements

46 Long Street, Wigston, Leicestershire, LE18 2AH

info@phillipsgeorge.co.uk
0116 216 8178

