



£430,000

1 Melbourne House

1 Salento Close

London

N3 1BX

EPC Rating '74'

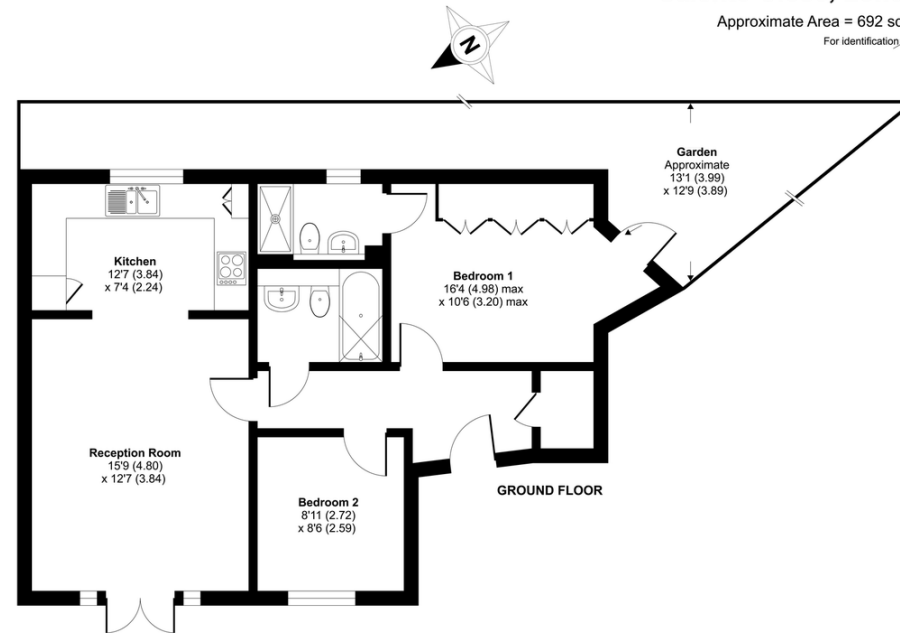
Council Tax Band

- Two Double Bedrooms
 - Ground Floor Apartment
 - Open Plan Reception/Kitchen
 - Own Private Patio Garden
 - Two Bathrooms
 - Current EPC Rating C
 - Allocated Parking For One Car
 - Security Gated Entrance
-

Salento Close, London, N3

Approximate Area = 692 sq ft / 64 sq m

For identification only - Not to scale



Floor plan produced in accordance with RICS Property Measurement Standards incorporating International Property Measurement Standards (IPMS2 Residential). © ricscom 2020. Produced for Spencer & Sener. REF:660349

Agents Note: Whilst every care has been taken to prepare these particulars, they are for guidance purposes only. All measurements are approximate for general guidance purposes only and whilst every care has been taken to ensure their accuracy, they should not be relied upon and potential buyers/tenants are advised to recheck the measurements