



PERIOD  
HOMES



Everleigh Gardens  
Upminster Essex RM14 1DP  
Guide Price £850,000



# Eversleigh Gardens, Upminster, Essex RM14 1DP

GUIDE PRICE £850,000 - £875,000

1930's - Located on the popular north side of Upminster within easy walking distance of the mainline station, this largely extended and fully renovated 1930's home offers impeccable, modern living accommodation arranged over three floors.

The attractive façade is punctuated by a double-height bay window under a brick gable, with a large resin-bound driveway provides excellent off-street parking to the front with barn-style doors to a storeroom. Moving inside, the interior impresses immediately, with a view all the way through the hallway to the garden via the striking kitchen extension. The bespoke shaker kitchen with large island creates a centrepiece to the open plan living space across the rear of this home. The kitchen is fitted to a high specification including a range of Neff appliances, wine cooler, and Quooker boiling water tap, as well as ceiling speakers.

Further ground floor accommodation includes a utility room adjacent to the kitchen, and a separate lounge to the front with fitted window shutters and preparation for surround sound. A cleverly concealed WC completes the ground floor accommodation.

The first floor provides yet further extended accommodation, with four bedrooms – including an en-suite shower room to bedroom two – and a family bathroom, both fitted to a luxury standard. A converted second floor offers a master suite with a further en-suite shower room.

Bi-folding doors lead to the rear garden of circa 90ft, which faces west (perfect for afternoon and evening sun) and commences with a 'sunken' patio leading to a large lawn area with shed to the rear.







**ENTRANCE HALL**

**LOUNGE**

15'10 x 11'11 (4.83m x 3.63m)

**KITCHEN/DINING/LIVING ROOM**

25'1 x 24'1 (7.65m x 7.34m)

**UTILITY ROOM**

7'1 x 7'1 (2.16m x 2.16m)

**STORE ROOM**

9'7 x 7'3 (2.92m x 2.21m)

**FIRST FLOOR LANDING**

**BEDROOM TWO**

15'6 x 10'6 (4.72m x 3.20m)

**EN-SUITE SHOWER ROOM**

**BEDROOM THREE**

11'5 x 10'7 (3.48m x 3.23m)

**BEDROOM FOUR**

14'6 x 6'11 (4.42m x 2.11m)

**BEDROOM FIVE**

7'9 x 7'2 (2.36m x 2.18m)

**BATHROOM**

**SECOND FLOOR**

**BEDROOM ONE**

19'8 x 16'2 (5.99m x 4.93m)

**EN-SUITE SHOWER ROOM**

**REAR GARDEN**

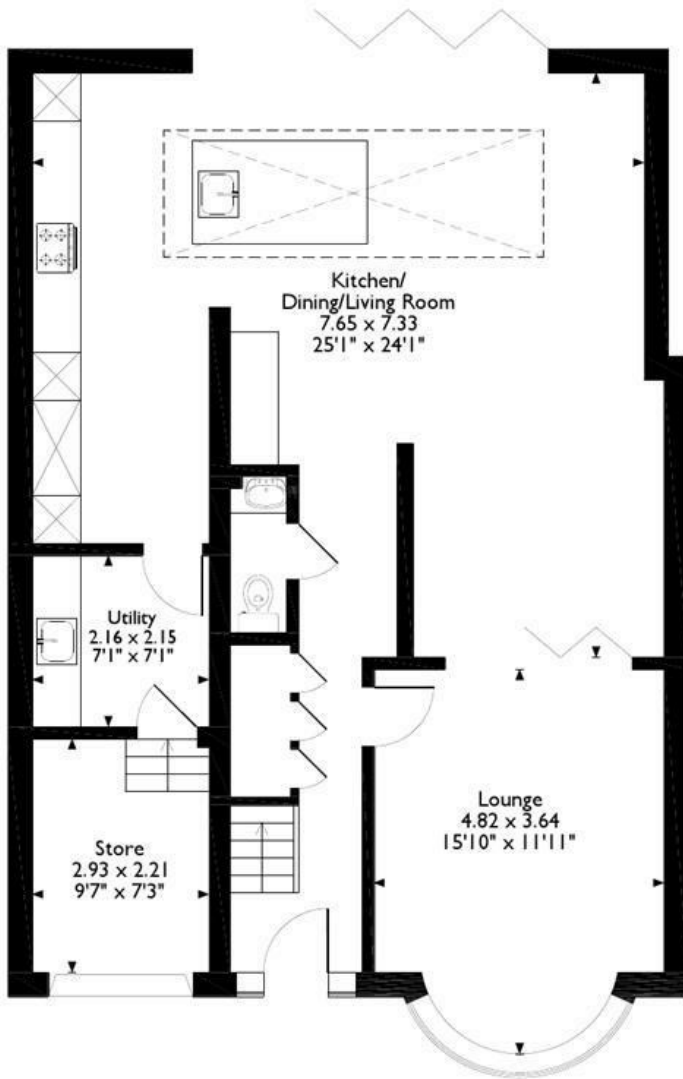




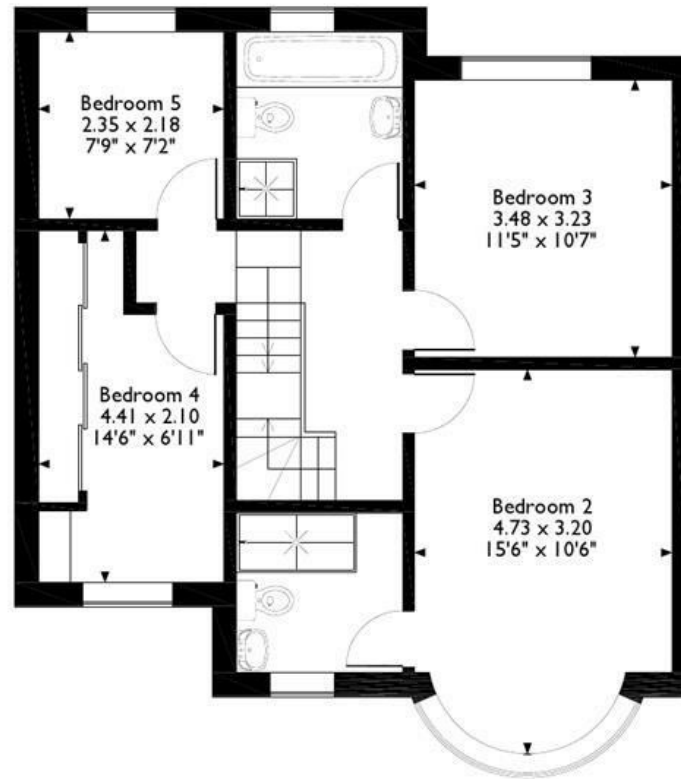


# Eversleigh Gardens, Upminster

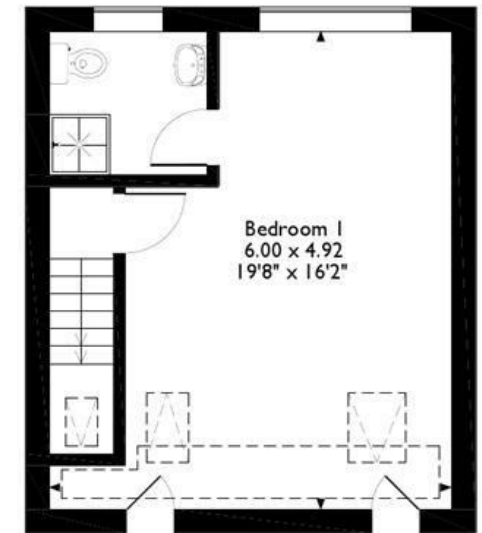
Approximate Gross Internal Area  
181 Sq M/1947 Sq Ft



**Ground Floor**



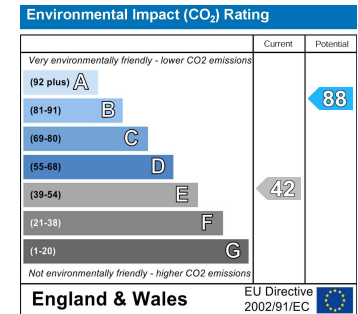
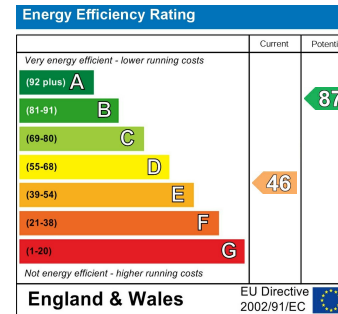
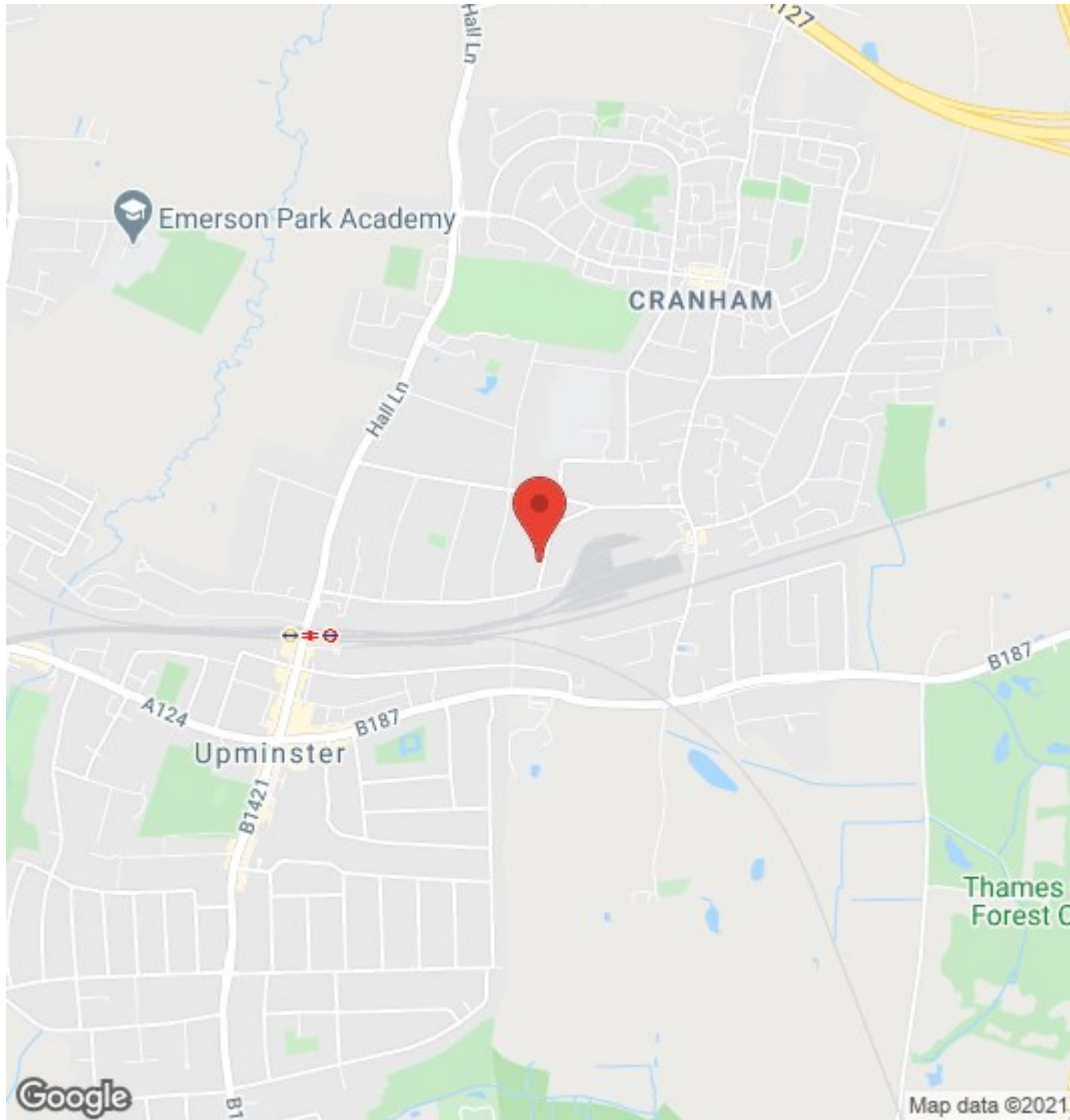
**First Floor**



**Second Floor**

Please note that the location of doors, windows and other items are approximate and this floorplan is to be used for illustrative purposes only. Unauthorized reproduction is prohibited.





**PLEASE CALL 01277 288000 TO ARRANGE A VIEWING**  
**www.periodhomes.co.uk**

**INDEPENDENT ESTATE AGENTS - VALUATIONS WITH NO OBLIGATION - PROFESSIONAL SERVICE**

These particulars do not constitute any part of an offer or contract. All measurements are given as a guide, no liability can be accepted for any errors arising therefrom. No responsibility is taken for any other error, omission, or mis-statement in these particulars. Period Homes, a trading style of Walkers Village and Country Homes Limited do not make or give, whether in these particulars, during negotiations or otherwise, any representation whatsoever in relation to this property.



