



BUTLER & STAG

Ollerton Green | London

| E3

**Physical viewings taking place* VIDEO TOUR AVAILABLE UPON REQUEST*

Spacious three bedroom maisonette arranged over the second and third floor of this development on the south-eastern border of Victoria Park.

- *Three Double Bedrooms • Furnished Apartment • South Facing Private Balcony • Available Immediately • Recently Refurbished • Moments From Victoria Park • Brand New Mattresses • Multiple Storage Cupboards • One Bathroom • One Downstairs Toilet*

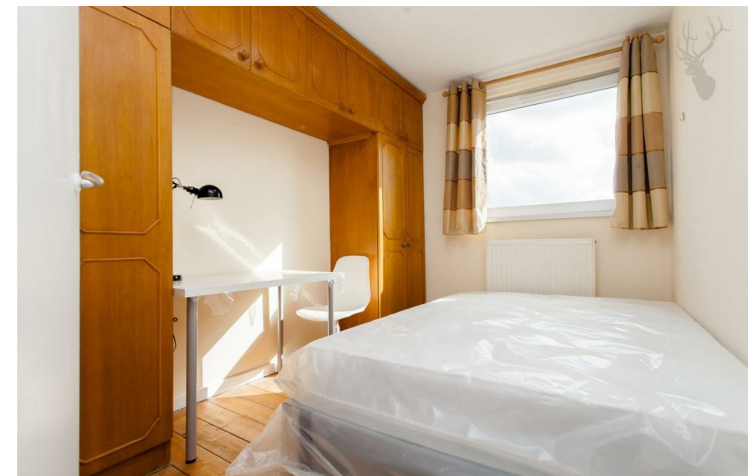
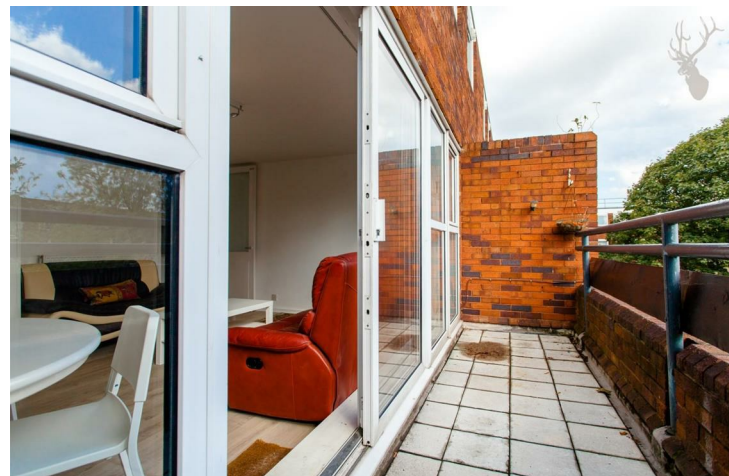
£1,650 |

Presented in good decorative condition throughout, second floor accommodation includes a good size living room with glazed sliding doors which open to the south-facing private balcony. There is a separate eat-in kitchen, storage and a cloakroom with one toilet on this floor. Upstairs there are three double bedrooms and the main bathroom.

Ollerton Green is well placed on the border of Victoria Park great for walkers and runners, whilst cyclists have easy access to the canal tow paths. Numerous transport links can be easily accessed, including Bow Road (District and Hammersmith & City) and Bow Church DLR, whilst Stratford International, Bethnal Green underground and bus routes are also easily accessible.

Roman Road Market is in close proximity, whilst the trendy pubs and restaurants of Hackney Wick are all within striking distance.

Available immediately, the property is offered furnished.

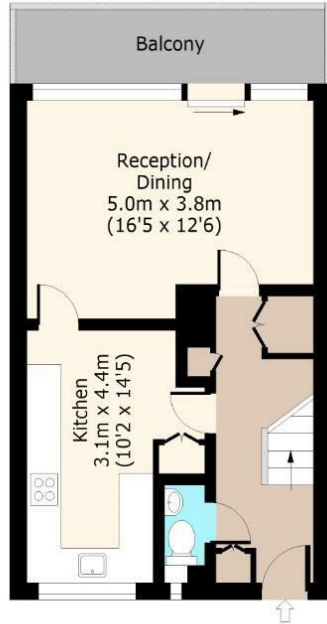




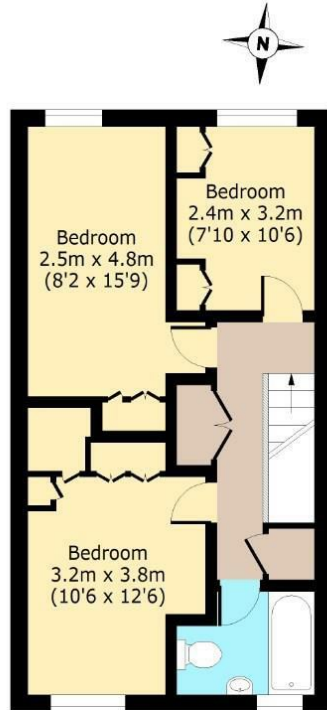
Ollerton Green, E3



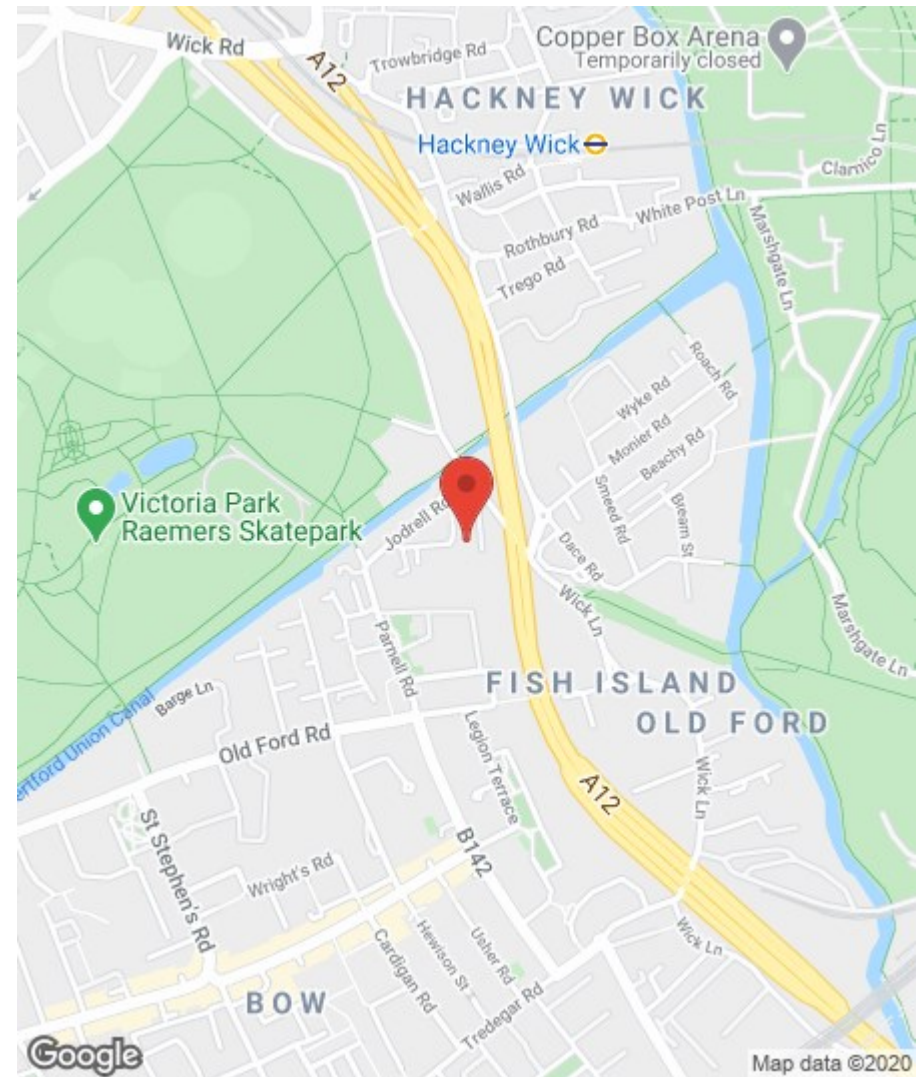
Second Floor
Approx. 42 Sq. meters (452 Sq. feet)



Third Floor
Approx. 50 Sq. meters (538 Sq. feet)



Total area: approx. 91.9 Sq. meters (990 Sq. feet) (Excluding Balcony)
Total area: approx. 98.9 Sq. meters (1065 Sq. feet) (Including Balcony)
For illustration purposes only - not to scale
www.lpaplus.com



BUTLER & STAG

508 Roman Road, Bow, London, E3 5LU | 020 8102 1236 |
bow@butlerandstag.com | www.butlerandstag.uk

Important Notice - These particulars have been prepared in good faith and they are not intended to constitute part of an offer or contract. We have not performed a structural survey on this property and the services, appliances and specific fittings have not been tested. All photographs, measurements, floor plans and distances referred to are given as a guide and should not be relied upon.

Energy Efficiency Rating		
	Current	Potential
Very energy efficient - lower running costs		
(92 plus) A		
(81-91) B		
(69-80) C		
(55-68) D		
(39-54) E		
(21-38) F		
(1-20) G		
Not energy efficient - higher running costs		
	64	72
England & Wales	EU Directive 2002/91/EC	

Environmental Impact (CO ₂) Rating		
	Current	Potential
Very environmentally friendly - lower CO ₂ emissions		
(92 plus) A		
(81-91) B		
(69-80) C		
(55-68) D		
(39-54) E		
(21-38) F		
(1-20) G		
Not environmentally friendly - higher CO ₂ emissions		
	61	71
England & Wales	EU Directive 2002/91/EC	