

Flat 9, 88 Palatine Road, West Didsbury, M20 3JW



JP & Brimelow
SALES

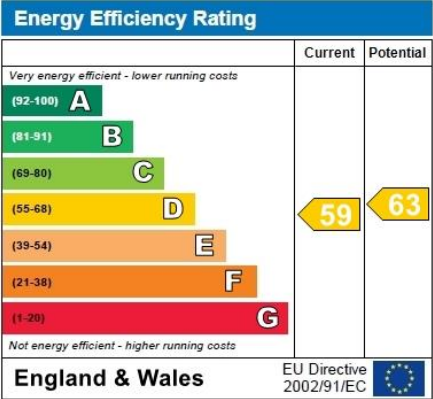
Price: £197,500

****VIDEO TOUR AVAILABLE**** A spacious & light, TWO DOUBLE BEDROOMED, top floor apartment positioned to the front of this attractive period conversion on Palatine Road in West Didsbury. A short stroll from both Lapwing Lane and Burton Road here with its array of independent boutique shops, popular bars, restaurants, The Albert Tennis Club and the Metrolink station on Lapwing Lane giving you direct access into the City centre/Media City and Didsbury village. The well-planned accommodation comprises; communal entrance hallway, stairs leading to all floors, a private entrance hallway with doors leading to: an impressive open plan lounge/dining/ fitted kitchen to the front aspect with open views, two double bedrooms and a modern white three-piece shower room. This apartment benefits from double glazing throughout, an alarm control panel, warmed by gas fired central heating, allocated off road parking to the front of the development with well-established flowerbeds and communal lawned garden. Will suit either a professional or couple due to the location and space available. Internal inspection is highly recommended.



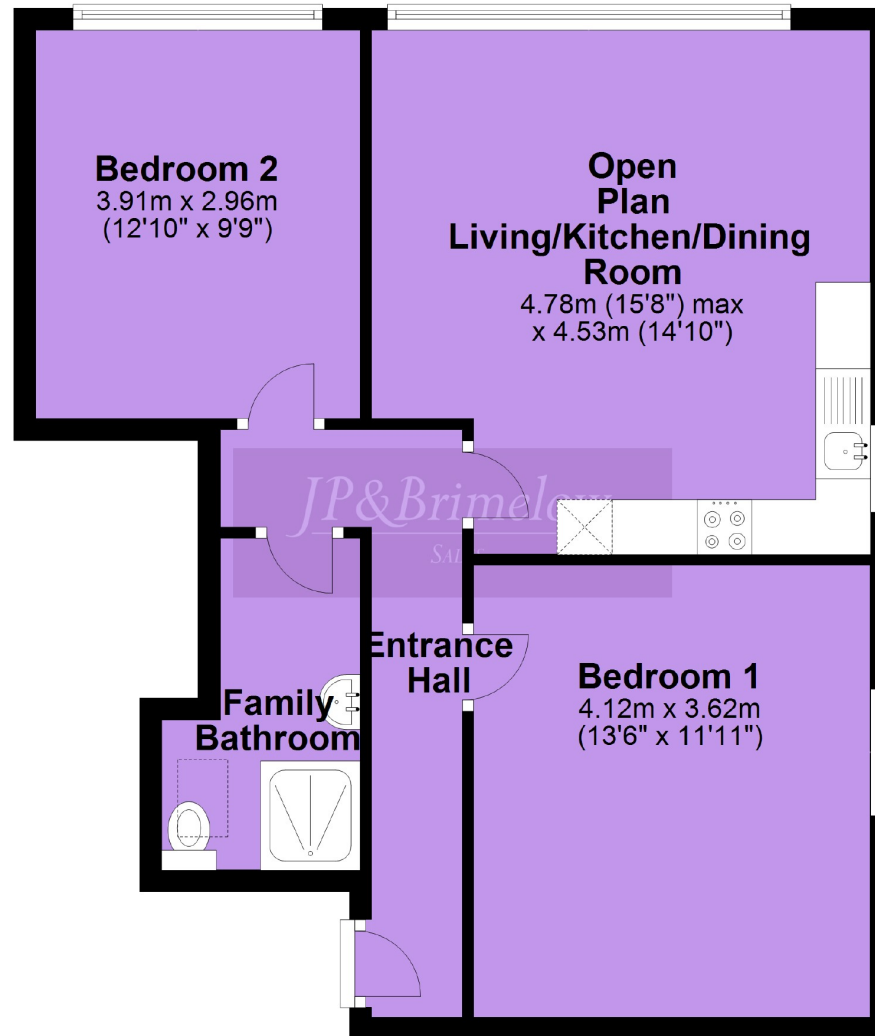


EPC Chart



Leasehold With 114 years remaining. The monthly service charge is £95.00. Annual ground rent of £200.00. (Information as per current vendor) October 2020. Council Tax Band: B

Top Floor

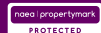


Chorlton & Didsbury Sales

430 Barlow Moor Road, Chorlton, Manchester, M21 8AD

Chorlton: 0161 882 2233 Didsbury: 0161 448 0622

E: chorlton@jpbrimelow.co.uk www.jpandbrimelow.co.uk



JP&Brimelow

SALES

NOTICE: JP & Brimelow Chorlton & Didsbury Ltd for themselves and for the vendors or lessors of this property whose agents they are give notice that:

- the particulars are set out as a general outline only for the guidance of intending purchasers or lessees, and do not constitute, nor constitute part of, an offer or contract;
- all descriptions, dimensions, references to the condition and necessary permissions for use and occupation, and other details are given in good faith and are believed to be correct but any intending purchasers or tenants should not rely on them as statements or representations of fact but must satisfy themselves by inspection or otherwise as to the correctness of each of them;
- no person in the employment of JP & Brimelow Ltd has any authority to make or give any representation or warranty whatever in relation to this property.



Follow us on Twitter @jpandbrimelows