



Jordanfishwick

CASTLEFIELD
Brook House



Brook House, Castlefield
M15 4QS
Price £155,000



The Property

Online Video.....https://youtu.be/Zy8r94Da_1s

This larger than average one bedroom 3rd floor apartment is located in Castlefield Locks, Brook House. Entrance hall with storage, living room with laminate flooring, double glazed window and open to the updated modern kitchen with fitted appliances, oven, fridge/freezer and washing machine, double bedroom and bathroom suite with shower attachment. Electric heating. Ideal FTB or investment property. Pets allowed in the development subject to management approval.

Directions

- 3rd Floor Apartment
- Larger Than Average One Bed
- Modern Kitchen
- Luxury Bathroom
- Beautifully Maintained
- Popular Location

Postcode - M15 4QS

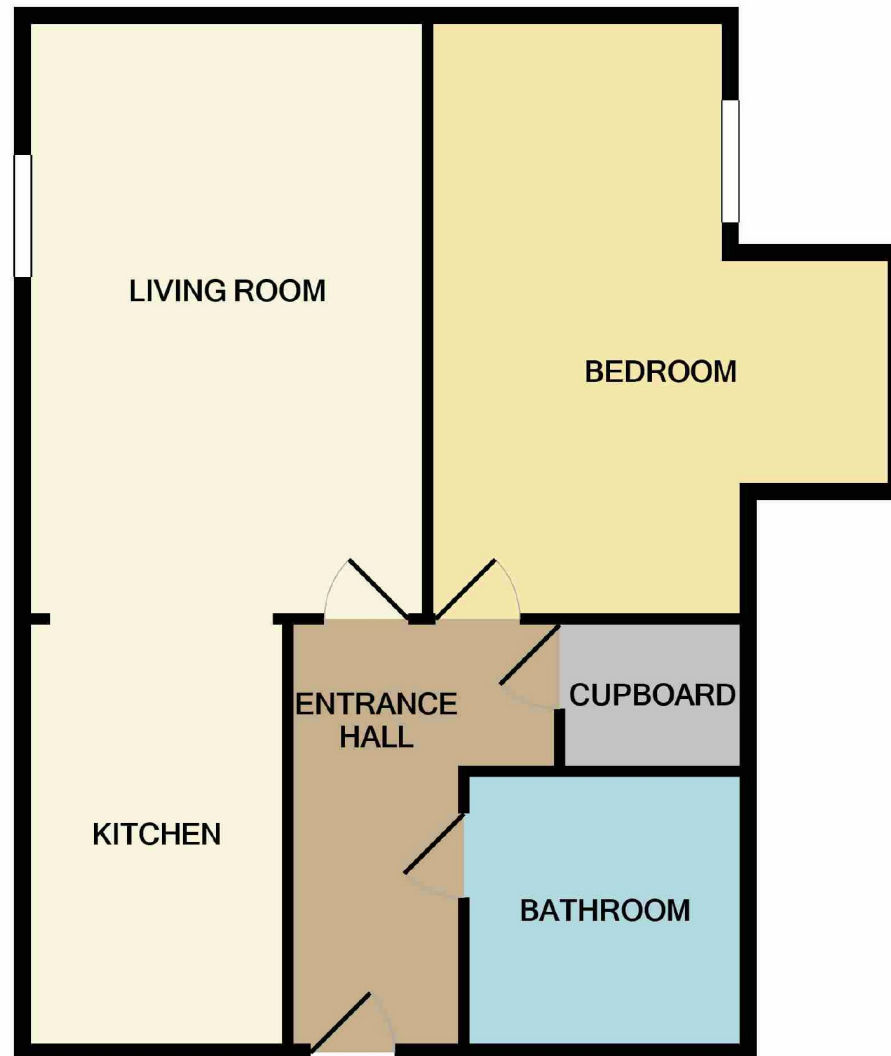
EPC Rating - C

Floor Area - 655 sq ft

Local Authority - Manchester Council

Council Tax - Band C





Measurements are approximate. Not to scale. Illustrative purposes only
Made with Metropix ©2020



These particulars are believed to be accurate but they are not guaranteed and do not form a contract. Neither Jordan Fishwick nor the vendor or lessor accept any responsibility in respect of these particulars, which are not intended to be statements or representations of fact and any intending purchaser or lessee must satisfy himself by inspection or otherwise as to the correctness of each of the statements contained in these particulars. Any floorplans on this brochure are for illustrative purposes only and are not necessarily to scale.

Offices also at:
Chorlton | Didsbury | Disley | Glossop | Hale | Macclesfield | Manchester | Sale | Wilmslow | Withington

68 The Arches, Whitworth Street West, Manchester, M1

0161 833 9499

manchester@jordanfishwick.co.uk

www.jordanfishwick.co.uk