

Milton Road, London, N15 3DS



Offers In Excess Of £500,000

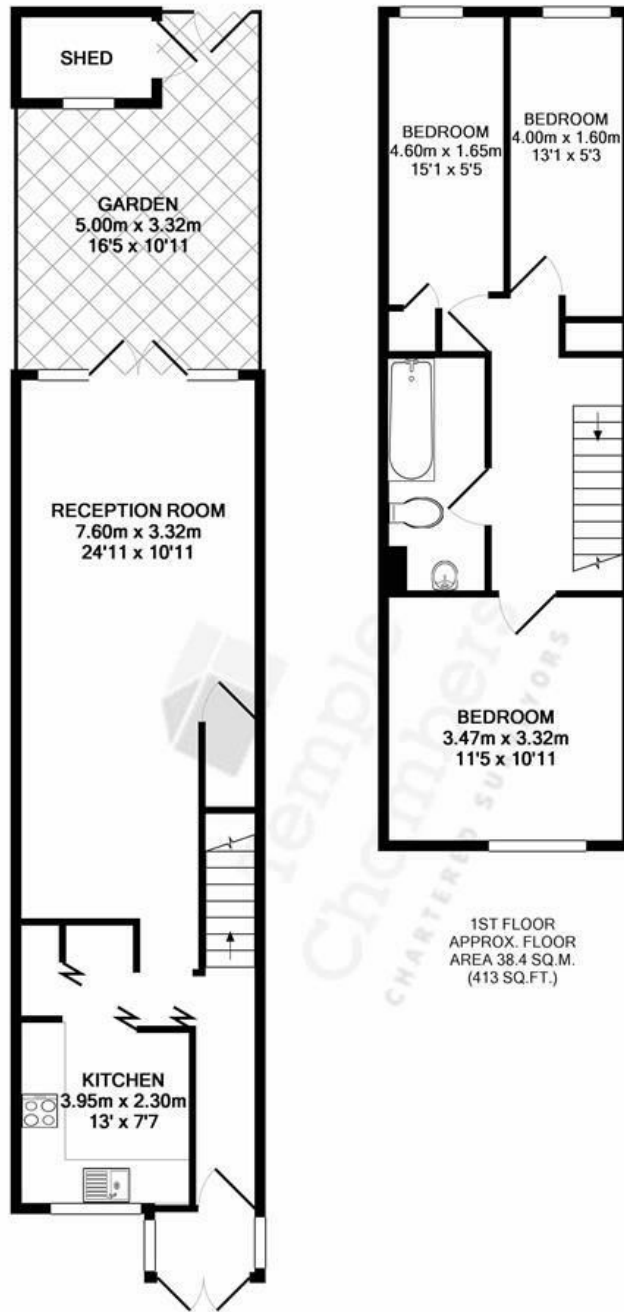
STUNNING, LARGE 3 BEDROOM HOUSE

Kings Group are proud to present this three DOUBLE bedroom house, located just off WEST GREEN ROAD, N15. This is in close proximity to TURNPIKE LANE station (Piccadilly Line) and Harringay Green Lanes. Occupants will benefit from a PRIVATE GARDEN, BRAND NEW fully equipped kitchen, Open plan living room, 2 Piece Bathroom suite with WATERFALL SHOWER, W/C and gas central heating.

Internal viewings advised

call 0208 802 5800





GROUND FLOOR
APPROX. FLOOR
AREA 42.5 SQ.M.
(457 SQ.FT.)

1ST FLOOR
APPROX. FLOOR
AREA 38.4 SQ.M.
(413 SQ.FT.)

TOTAL APPROX. FLOOR AREA 80.9 SQ.M. (871 SQ.FT.)

Whilst every attempt has been made to ensure the accuracy of the floor plan contained here, measurements of doors, windows, rooms and any other items are approximate and no responsibility is taken for any error, omission, or mis-statement. This plan is for illustrative purposes only and should be used as such by any prospective purchaser. The services, systems and appliances shown have not been tested and no guarantee as to their operability or efficiency can be given
Made with Metropix ©2017

Energy Efficiency Rating		Current	Potential
Very energy efficient - lower running costs			
(92 plus) A			83
(81-91) B			
(69-80) C			
(55-68) D			
(39-54) E		56	
(21-38) F			
(1-20) G			
Not energy efficient - higher running costs			
England & Wales		EU Directive 2002/91/EC	

Environmental Impact (CO ₂) Rating		Current	Potential
Very environmentally friendly - lower CO ₂ emissions			
(92 plus) A			80
(81-91) B			
(69-80) C			
(55-68) D			
(39-54) E		49	
(21-38) F			
(1-20) G			
Not environmentally friendly - higher CO ₂ emissions			
England & Wales		EU Directive 2002/91/EC	



Associated Offices in London, Essex and Hertfordshire
Kings Head Office Tudor Lodge, Burton Lane, Goffs Oak, Hertfordshire EN7 6SY Tel: 01707-872000

