



Black and White
CLEARLY A BETTER SERVICE

52 ELY CLOSE, BIRMINGHAM, B37 5RU
£145,000





NEW INSTRUCTION!

This family three bedroom home, open to investors or families, is located in the centre of Chelmsley Wood. A two minute walk from Asda supermarket and Town centre, and in close proximity to multiple schools and transport links. Featuring two large bedrooms and downstairs W.C.

Call today to arrange a viewing!

FRONT OF HOUSE Front garden, brick wall with gate, new front door.

PORCH 7' 0" x 4' 7" (2.14m x 1.42m) Lots of storage space in porch, door to hallway

HALLWAY 3' 6" x 16' 5" (1.08m x 5.01m) Central heating wall mounted radiator, doors leading to downstairs w.c, living room and kitchen/diner.

KITCHEN/DINER 16' 5" x 10' 4" (5.01m x 3.15m) Tiled floor, uvpc double glazed window to front, central heating wall mounted radiator, breakfast bar.

LIVING ROOM 12' 11" x 17' 8" (3.96m x 5.39m) Spacious living room, sliding glass doors leading to



garden, central heating wall mounted radiator, coving to ceiling.

DOWNSTAIRS W.C 3' 1" x 5' 9" (0.96m x 1.76m)
Toilet, wash basin, central heating wall mounted radiator.

GARDEN Patio, shed, extra storage area, easily maintainable grass area.

LANDING 7' 0" x 10' 11" (2.14m x 3.34m) Doors leading to bedroom 1,2 and 3, storage cupboard and bathroom

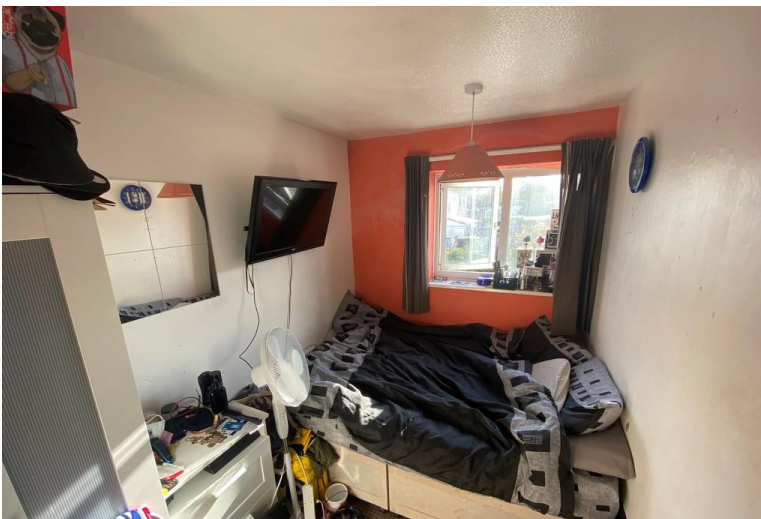


BEDROOM 1 13' 6" x 10' 3' 5" (4.14m x 3.15m) Uvpc double glazed window to front, central heating wall mounted radiator.

BEDROOM 2 12' 6" x 10' 4" (3.82m x 3.15m) Built in wardrobe. Uvpc double glazed window to rear. Central heating wall mounted radiator.

BEDROOM 3 9' 7" x 7' 0" (2.93m x 2.14m) Uvpc double glazed window to rear. Central heating wall mounted radiator.

BATHROOM 7' 0" x 8' 6" (2.14m x 2.60m) Toilet, wash basin, bath/shower. Central heating wall mounted radiator. Uvpc double glazed opaque window. Boiler room inside.





%epcGraph_c_1_304%