



HYDE PARK TOWERS 1 PORCHESTER TERRACE,
LONDON, W2
£2,600 Per Month

T. +44 (0) 20 7935 0011
E. enquire@napierwatt.co.uk
WWW.NAPIERWATT.CO.UK

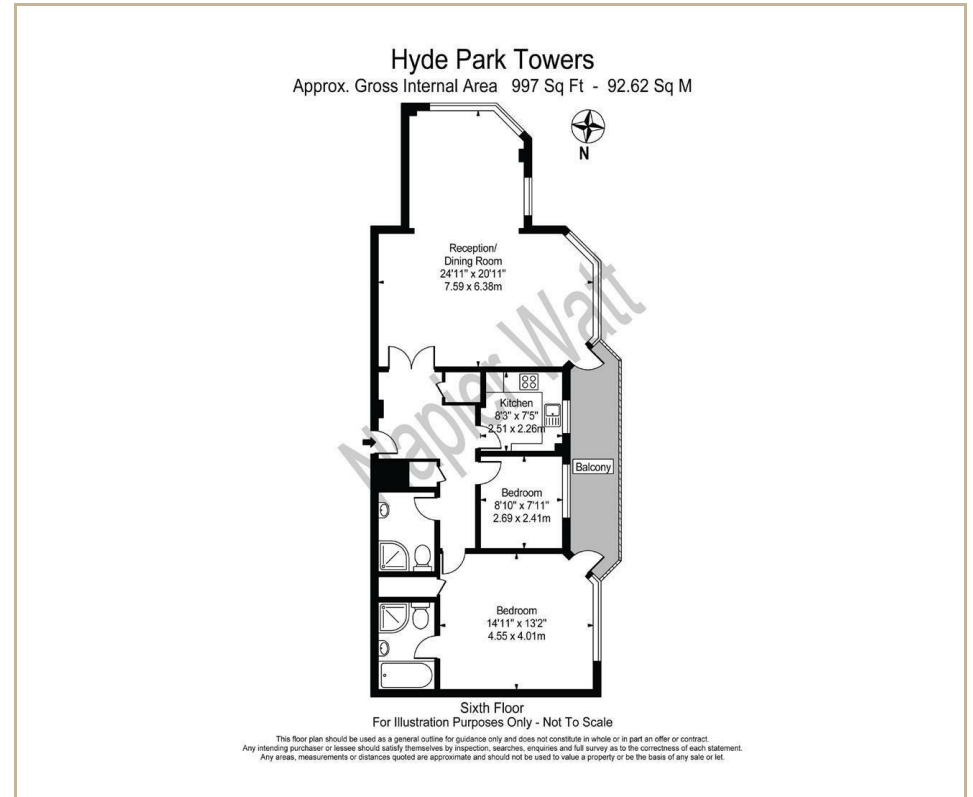
NAPIER WATT
PROPERTY CONSULTANTS

Description

We are pleased to offer a bright two bedroom apartment with scenic views of Hyde Park. The property comprises two bedrooms, two bathrooms (one en-suite), reception room, fully fitted kitchen and balcony. The property is conveniently located moments away from the open spaces of Hyde Park and a short walk

away from Lancaster Gate and Queensway Underground Stations.

2 Bedrooms : En Suite Bathroom : Shower Room : Reception Room/Dining Room : Kitchen : Balcony : Parking : EPC Rating C



TERMS

Fees & Charges: Tenancies exceeding £100,000 Per annum £480 inc VAT, Tenancies where a company is a tenant £480 Inc VAT.

For Clarification we wish to inform prospective purchasers that we have prepared these sales particulars as a general guide. We have not carried out a survey, nor tested the services, appliances and specific fittings. Room sizes are approximate and rounded: they are taken between internal wall surfaces and therefore include cupboards/shelves, etc. Accordingly, they should not be relied upon for carpets and furnishings. Formal notice is given that all fixtures and fittings, carpeting, curtains/blinds and kitchen equipment, whether fitted or not, are deemed to be removable by the vendor unless specifically itemised within these sales particulars.

T. +44 (0) 20 7935 0011
E. enquire@napierwatt.co.uk
WWW.NAPIERWATT.CO.UK

NAPIER WATT
PROPERTY CONSULTANTS