



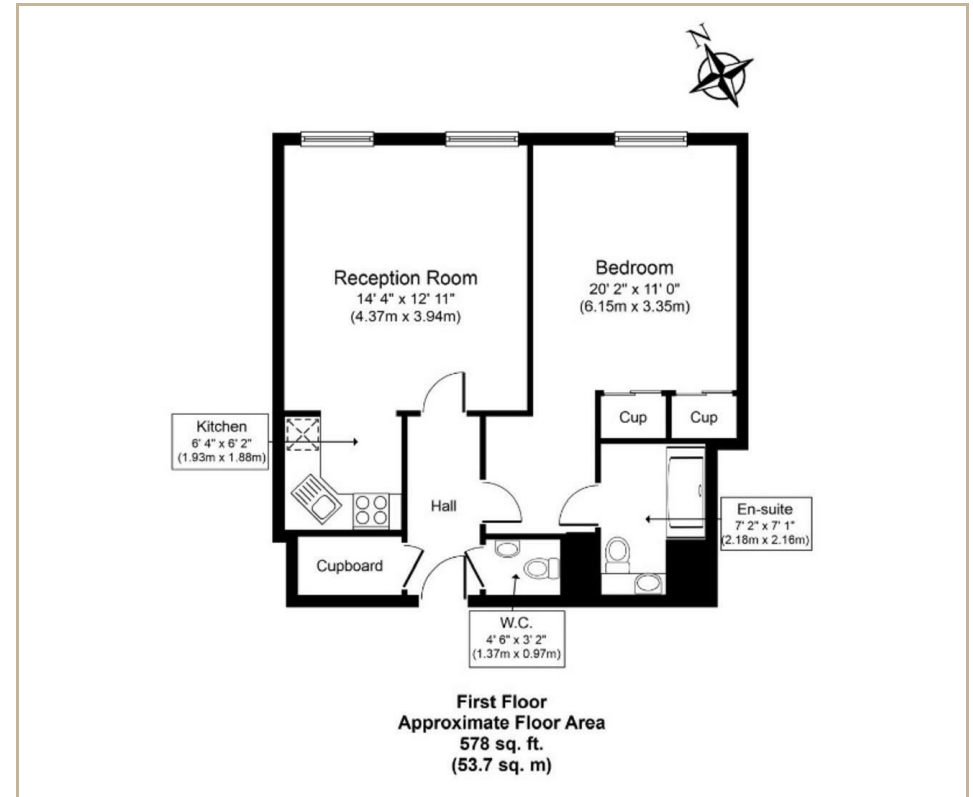
PARKVIEW RESIDENCE,
MARYLEBONE, NW1
£3,510 Per Month

T. +44 (0) 20 7935 0011
E. enquire@napierwatt.co.uk
WWW.NAPIERWATT.CO.UK

NAPIER WATT
PROPERTY CONSULTANTS

Description

A bright and contemporary one bedroom flat with a balcony on the first floor (with lift) of this popular portered block. The property covers an internal floor area of 578 sq.ft / 53 sqm, benefitting from a large open plan kitchen to reception room with wood flooring, double bedrooms, bathroom, 24 hour security, concierge and an in-house gym. It is ideally located moments from Regents Park, Baker Street Underground Station and Marylebone Village. Available furnished or unfurnished.



TERMS

Fees & Charges: Tenancies exceeding £100,000 Per annum £480 inc VAT, Tenancies where a company is a tenant £480 inc VAT.

For Clarification we wish to inform prospective purchasers that we have prepared these sales particulars as a general guide. We have not carried out a survey, nor tested the services, appliances and specific fittings. Room sizes are approximate and rounded: they are taken between internal wall surfaces and therefore include cupboards/shelves, etc. Accordingly, they should not be relied upon for carpets and furnishings. Formal notice is given that all fixtures and fittings, carpeting, curtains/blinds and kitchen equipment, whether fitted or not, are deemed to be removable by the vendor unless specifically itemised within these sales particulars.

T. +44 (0) 20 7935 0011
E. enquire@napierwatt.co.uk
WWW.NAPIERWATT.CO.UK

NAPIER WATT
PROPERTY CONSULTANTS