



PHASE 2 - MIDDLE TOWER - 79 MARINER POINT Brighton

Doon Lane, Brighton, BN1 4JG





PHASE 2 - MIDDLE TOWER - 79 MARINER POINT Brighton Road |

£320,000

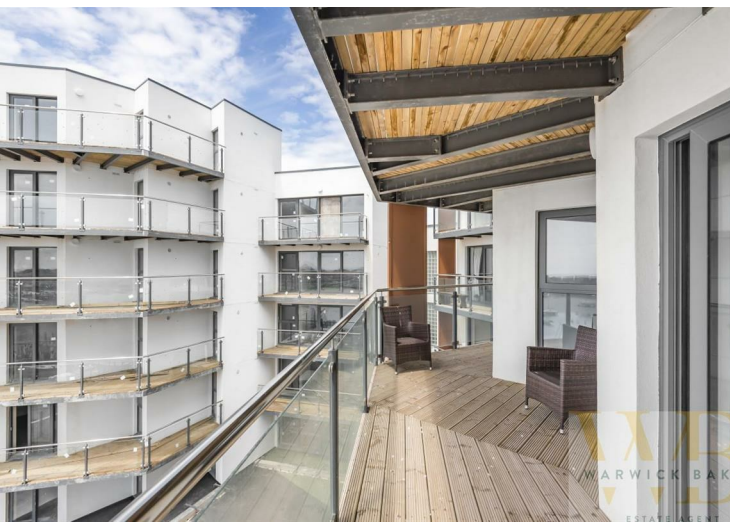
PHASE 2 - MIDDLE TOWER - VIEWS OF SHOREHAM, THE RIVER AND FOOTBRIDGE

FISHERMANS KNOT 730 SQ FT - 2 BEDROOMS - THIRD FLOOR - EASTERLY ASPECT

RIVER FRONT DEVELOPMENT WITH STUNNING VIEWS - CALL NOW FOR MORE DETAILS 01273 461144

*** PLEASE NOTE THE PHOTOS ARE OF THE SHOW FLAT AND MAY NOT BE THIS PARTICULAR PLOT ***

- LUXURY NEW BUILD APARTMENT
- DIRECT RIVER VIEWS
- MODERN CONTEMPORARY FINISH
- 10 YEAR GUARANTEE
- BALCONY
- CLOSE TO MAINLINE RAILWAY STATION
- AUDIO ENTRY SYSTEM
- LIFT TO ALL FLOORS
- AVAILABLE NIOW
- 01273 461144



REQUEST AN AWARD WINNING VALUATION
 TO SEE HOW MUCH YOUR PROPERTY IS WORTH 01273 461144

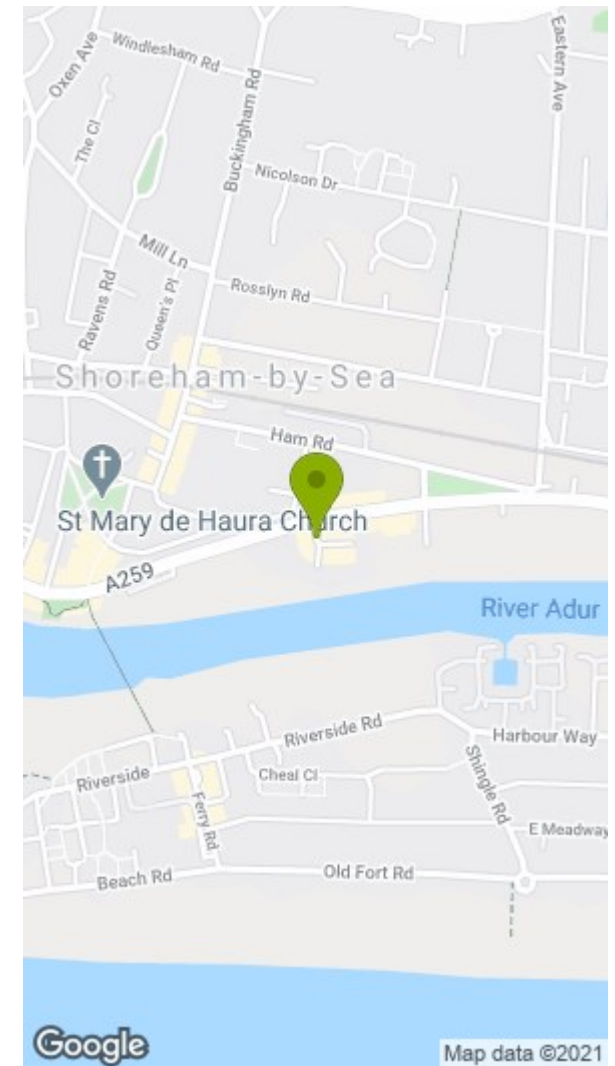
Fisherman's Knot
 730 sq' (67.8m²)

- Bedroom 1: 10'10" x 10'0" (5.1m x 3.0m)
- Bedroom 2: 14'4" x 8'0" (4.35m x 2.6m)
- Living/Kitchen/Dining: 14'4" x 14'0" (4.35m x 4.25m)
- Bathroom: 8'0" x 5'0" (2.4m x 1.7m)

Sailor's Coil
 741 sq' (68.9m²)

- Bedroom 1: 13'1" x 9'0" (4.0m x 2.9m)
- Bedroom 2: 12'7" x 9'0" (3.85m x 2.75m)
- Living/Kitchen/Dining: 22'3" x 13'0" (6.8m x 4.2m)
- Bathroom: 8'0" x 5'0" (2.4m x 1.7m)

Measurements Approximate And For Display Purposes Only



Disclaimer

* These particulars are intended to give a fair and substantially correct overall description for the guidance of intending purchasers and do not constitute an offer or part of a contract. Prospective purchasers and/or lessees ought to seek their own independent professional advice.

* All descriptions, dimensions, areas, references to condition and necessary permissions for use and occupation and other details are given in good faith and are believed to be correct, but any intending purchasers should not rely on them as statements or representations of fact, but must satisfy themselves by inspection or otherwise as to the correctness of each of them.

* All measurements are approximate

Energy Efficiency Rating	
Current	Potential
Very energy efficient - lower running costs	
(92 plus) A	
(81-91) B	
(69-80) C	
(55-68) D	
(39-54) E	
(21-38) F	
(1-20) G	
Not energy efficient - higher running costs	
England & Wales	

Environmental Impact (CO ₂) Rating	
Current	Potential
Very environmentally friendly - lower CO ₂ emissions	
(92 plus) A	
(81-91) B	
(69-80) C	
(55-68) D	
(39-54) E	
(21-38) F	
(1-20) G	
Not environmentally friendly - higher CO ₂ emissions	
England & Wales	