



Otley Road, Leeds, LS6 3PX

£795 Per Calendar Month
Available from: 1st July 2021

VIRTUAL 360 VIEWINGS AVAILABLE

 2  1  1  C

www.sugarhouseproperties.co.uk

Property Details

Full Description

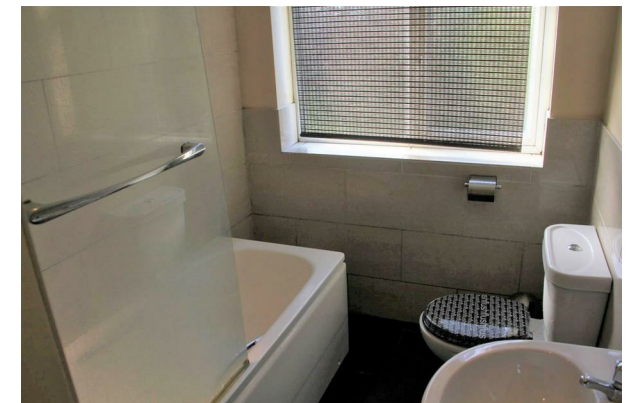
Fantastic two double bedroom flat, recently redecorated inside, and with two large double bedrooms. There's a pretty snazzy new kitchen with high gloss units and fitted appliances as well as a large separate lounge.

The size of the flat is unusually large for a two bed property and there's also off road parking and a truly enviable location right in the centre of Headingley right next to the famous "Salvo's" restaurant and just seconds away from the host of bars, cafes and restaurants that Headingley has to offer.

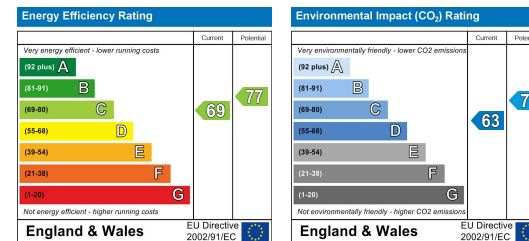
Not a bad price either!

Key Property Features

- Recently Redecorated
- Large Spacious Flat
- Large Double Bedrooms
- Modern Kitchen
- Smart Bathroom
- Period Features
- Off Road Parking
- Close To Transport Links
- Close to Restaurant, Bar and Shops
- Virtual Tour Available



Energy Efficiency Graph



Hassle Free, Contactless Lettings

Ask us about our 360 degree virtual viewings and digital online tenancy applications.

These particulars, whilst believed to be accurate, are set out as a general outline for guidance only. If in the event, any error or omission made in these particulars, the Agent or Landlord cannot be held liable as this is brochure is for information only.



0113 816 0131
info@sugarhouseproperties.co.uk

1st floor, 21 Otley Road, Headingley, Leeds LS6 3AA
www.sugarhouseproperties.co.uk

/sugarhouseproperties
@Sugarhouseleeds