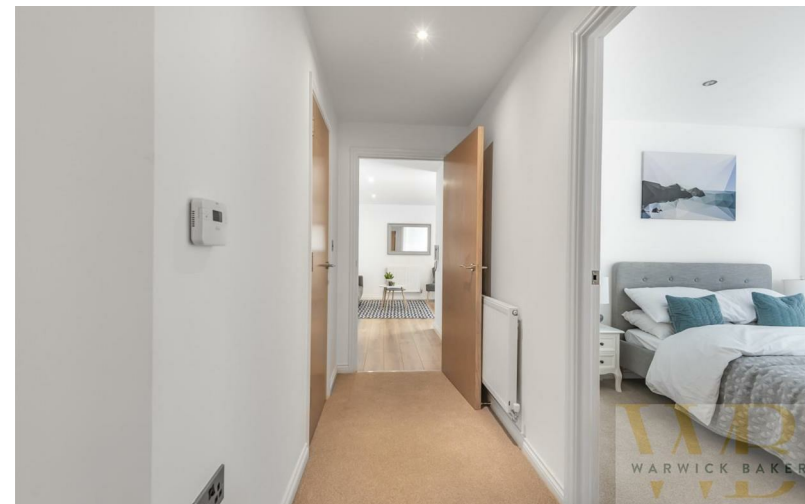




PHASE 3 - WEST TOWER - 52 MARINER POINT Brighton
Road 1, Chichester, W Sussex PO19 2PL





PHASE 3 - WEST TOWER - 52 MARINER POINT Brighton Road | | Shoreham-

£352,500

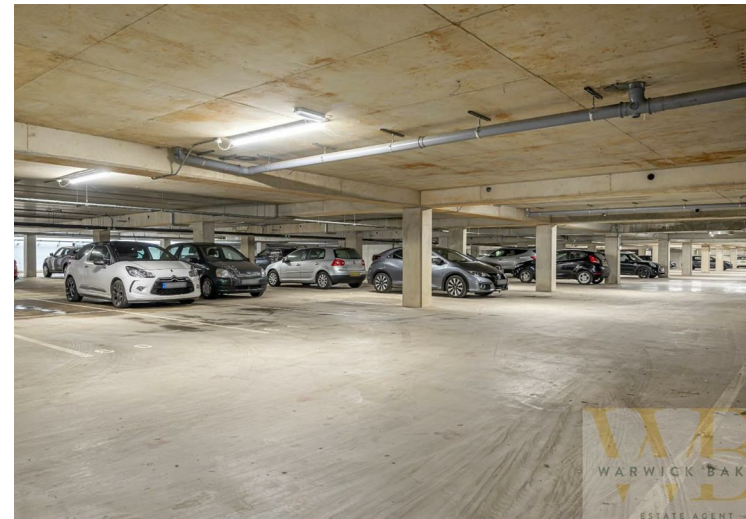
PHASE 3 - WEST TOWER - VIEWS OF SHOREHAM, THE RIVER AND FOOTBRIDGE

SAILORS COIL 741 SQ FT - 2 BEDROOMS - THIRD FLOOR - WESTERLY ASPECT

HELP TO BUY SCHEME AVAILABLE - CALL NOW FOR MORE DETAILS 01273 461144

*** PLEASE NOTE THE PHOTOS ARE OF THE SHOW FLAT AND MAY NOT BE THIS PARTICULAR PLOT ***

- LUXURY NEW BUILD APARTMENT
- DIRECT RIVER VIEWS
- MODERN CONTEMPORARY FINISH
- 10 YEAR GUARANTEE
- BALCONY
- CLOSE TO MAINLINE RAILWAY STATION
- AUDIO ENTRY SYSTEM
- LIFT TO ALL FLOORS
- AVAILABLE NIOW
- HELP TO BUY SCHEME AVAILABLE



BRITISH PROPERTY AWARDS 2018-2019
 REQUEST AN AWARD WINNING VALUATION TO SEE HOW MUCH YOUR PROPERTY IS WORTH
 01273 461144

Help to Buy

Fisherman's Knot
730 sq' (67.8m²)

Bedroom 1
16'10" x 10'0" (5.1m x 3.0m)

Bedroom 2
14'4" x 8'0" (4.35m x 2.6m)

Living/Kitchen/Dining
14'4" x 14'0" (4.35m x 4.25m)

Bathroom
8'0" x 5'6" (2.4m x 1.7m)

Sailors Coil
741 sq' (68.9m²)

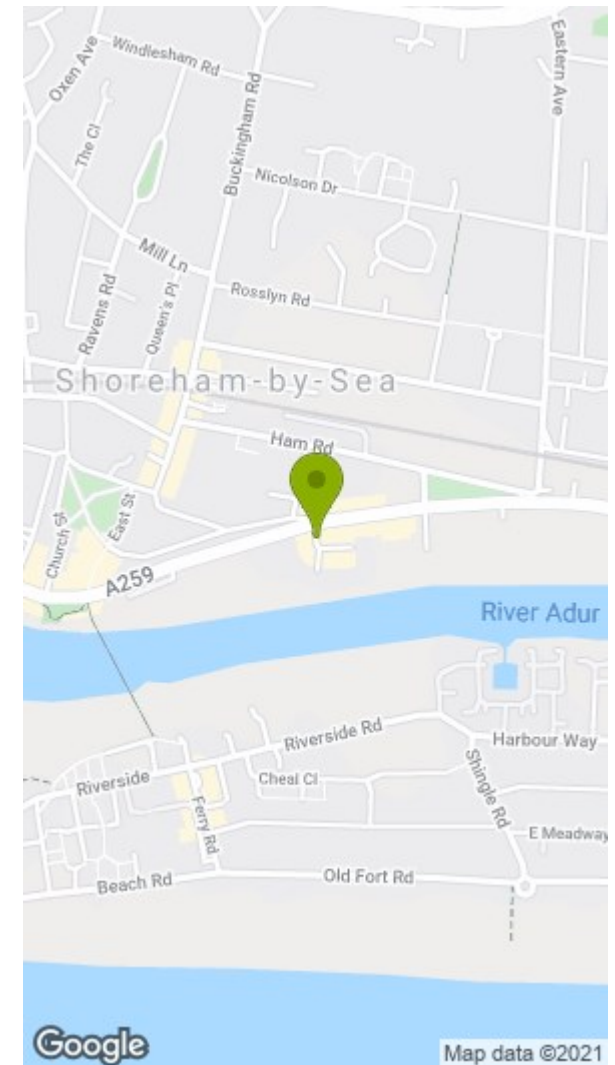
Bedroom 1
13'1" x 9'6" (4.0m x 2.9m)

Bedroom 2
12'7" x 9'0" (3.85m x 2.75m)

Living/Kitchen/Dining
22'3" x 13'9" (6.8m x 4.2m)

Bathroom
8'0" x 5'6" (2.4m x 1.7m)

Measurements Approximate And For Display Purposes Only



Disclaimer

* These particulars are intended to give a fair and substantially correct overall description for the guidance of intending purchasers and do not constitute an offer or part of a contract. Prospective purchasers and/or lessees ought to seek their own independent professional advice.

* All descriptions, dimensions, areas, references to condition and necessary permissions for use and occupation and other details are given in good faith and are believed to be correct, but any intending purchasers should not rely on them as statements or representations of fact, but must satisfy themselves by inspection or otherwise as to the correctness of each of them.

* All measurements are approximate

| Energy Efficiency Rating | | Environmental Impact (CO ₂) Rating | |
|---|-------------------------|---|-------------------------|
| Current | Potential | Current | Potential |
| Very energy efficient - lower running costs (92 plus) A | | Very environmentally friendly - lower CO ₂ emissions (92 plus) A | |
| (81-91) B | | (81-91) B | |
| (69-80) C | | (69-80) C | |
| (54-68) D | | (54-68) D | |
| (39-54) E | | (39-54) E | |
| (21-38) F | | (21-38) F | |
| (1-20) G | | (1-20) G | |
| Not energy efficient - higher running costs | | Not environmentally friendly - higher CO ₂ emissions | |
| England & Wales | EU Directive 2002/91/EC | England & Wales | EU Directive 2002/91/EC |