



*jordanfishwick*

HEATON MERSEY  
Bankside Court





**Bankside Court, Heaton  
Mersey SK4 3JD**  
**£80,000**



### **The Property**

A one bedroom retirement apartment forming part of a popular purpose built development in a quiet leafy residential location. The development also benefits from lift access to all floors, a pleasant communal entrance lounge with seating area, generous residents lounge with an adjoining kitchenette and large sun terrace off, laundry facilities and regular social activities for those who wish to participate. Offered for sale with no onward chain and ready to move into, the living space in outline comprises;- Communal entrance hall, stairs and lifts to all floors, entrance hallway, living room opening to the fitted kitchen with storage cupboard off, double bedroom with fitted wardrobe and a shower room with white suite and chrome fittings. Externally; landscaped communal

gardens surround the building and include residents parking areas.

### **Directions**

Travelling along Didsbury Road (A5145) in a Westerly direction, continue through the traffic lights at the junction with Mauldeth Road and take the next right into Lodge Crt. Cannock Drive can then be found on the left hand side.



- Retirement apartment
- Over 55's
- One Bedroom with fitted robes
- Living room with kitchen off
- Modern shower room
- Popular development
- Lift access to all floors
- Residents lounge
- Communal terrace and laundry
- Gardens & parking

**Postcode** - SK4 3JD

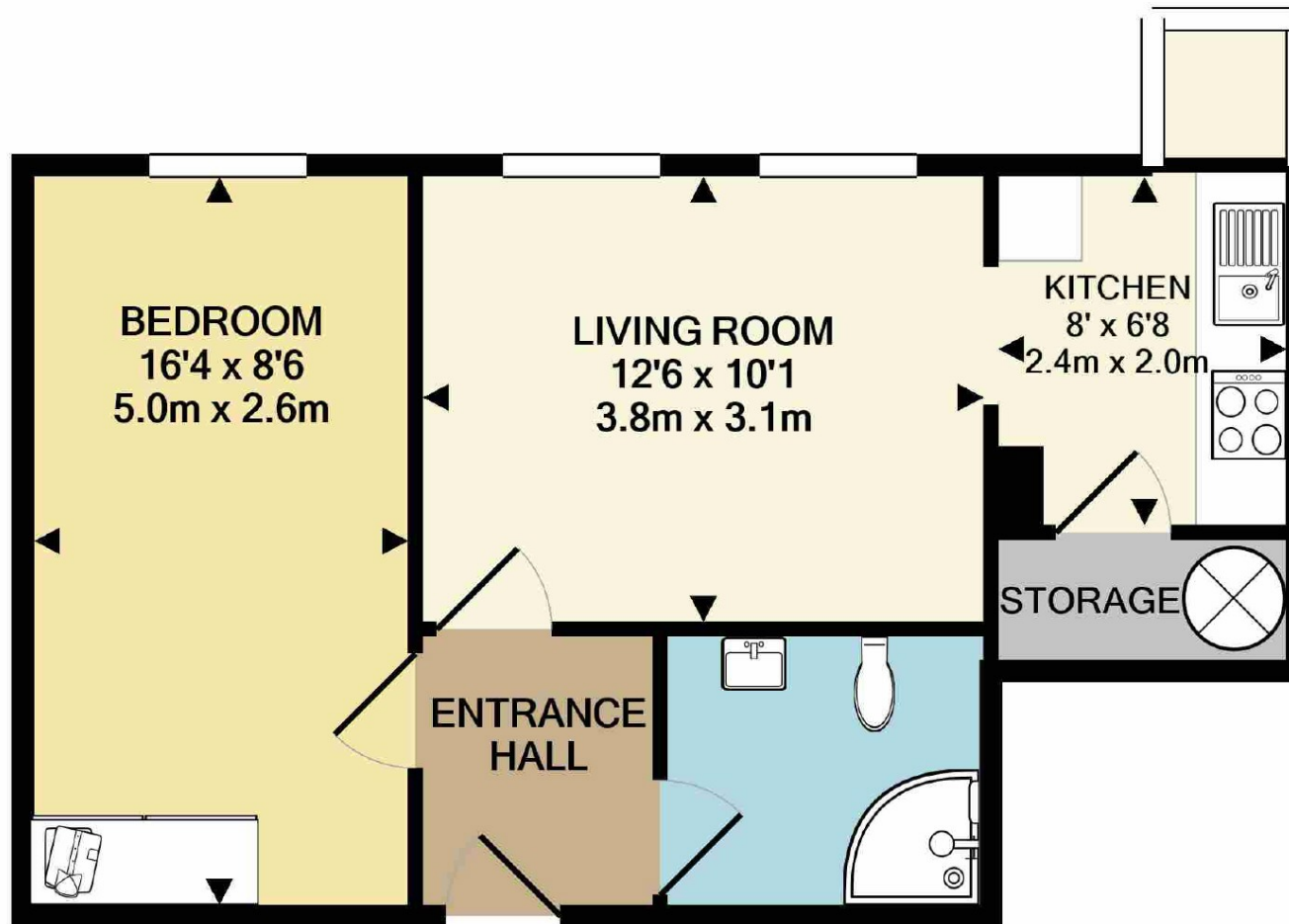
**EPC Rating** - C

**Floor Area** - 424 sq ft

**Local Authority** - Manchester City Council

**Council Tax** - Band A





**TOTAL APPROX. FLOOR AREA 424 SQ.FT. (39.4 SQ.M.)**  
 Measurements are approximate. Not to scale. Illustrative purposes only  
 Made with Metropix ©2020



These particulars are believed to be accurate but they are not guaranteed and do not form a contract. Neither Jordan Fishwick nor the vendor or lessor accept any responsibility in respect of these particulars, which are not intended to be statements or representations of fact and any intending purchaser or lessee must satisfy himself by inspection or otherwise as to the correctness of each of the statements contained in these particulars. Any floorplans on this brochure are for illustrative purposes only and are not necessarily to scale.

Offices also at: Wilmslow, Macclesfield, Hale, Sale, Chorlton, Glossop, Manchester & Salford

757-759 Wilmslow Road, Didsbury Village, Manchester, M20

**0161 445 4480**

didsbury@jordanfishwick.co.uk  
 www.jordanfishwick.co.uk