



Blenheim Road, London, W4 1ET

Guide Price £2,500,000

WHITMAN & CO.

SALES · LETTINGS · COMMERCIAL

- Bedford Park Conservation Area
- Landscaped garden
- Impressive rear extension
- Period semi-detached house
- Open aspects front and rear
- Immaculate condition throughout

Tenure - Freehold
 Local Authority - Hounslow
 Council Tax - Band G (£2124.92 pa)

THE PROPERTY

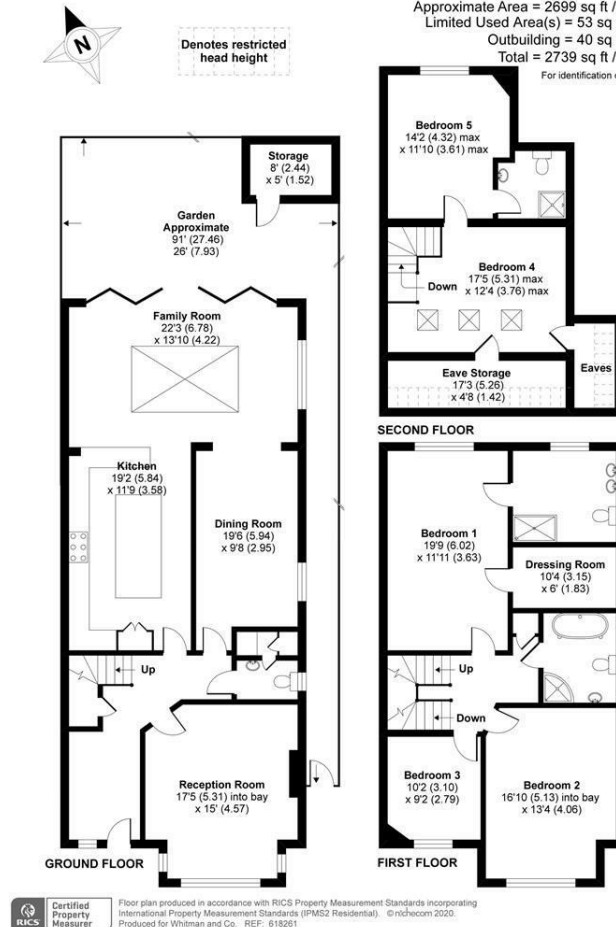
A wider than an average semi-detached period family home with open aspects offering an excellent balance of living and entertaining space in the heart of the Bedford Park Conservation Area. The accommodation comprises: luxury master suite including dressing room, three further double bedrooms, fifth double bedroom/sitting room, luxury ensuite and bathroom, large entrance hall, 17' reception room, bespoke kitchen, dining room, full-width family room, utility room, cloakroom, private landscaped garden, extensive storage, immaculate order throughout. Ideally situated in this prestigious residential road offering close proximity to all amenities including Turnham Green Station and the boutique shops, cafes and restaurants on Turnham Green Terrace.

SITUATION



Blenheim Road, London, W4

Approximate Area = 2699 sq ft / 250.7 sq m
 Limited Used Area(s) = 53 sq ft / 4.9 sq m
 Outbuilding = 40 sq ft / 3.7 sq m
 Total = 2739 sq ft / 254.4 sq m
 For identification only - Not to scale



5-7 Turnham Green Terrace, Chiswick, London, W4 1RG

Tel 020 8747 8300

E-mail sales@whitmanandco.com

Website www.whitmanandco.com



MISREPRESENTATION ACT 1967

Whitman & Co. for themselves and for the vendors give notice that these particulars do not constitute any part of, an offer of contract. All statements contained in these particulars are made without responsibility on the part of Whitman & Co. or the vendor. None of the statements contained in these particulars is to be relied upon as statements or representations of facts. Any intending purchaser must satisfy himself by inspection or otherwise as to the correctness of each of the statements contained in these particulars. The vendor does not make or give, and neither Whitman & Co. or any person in their employment has any authority to make or give, any representation or warranty whatever in relation to the property.