



Noble House, London, W4 4BA

£799,950

WHITMAN & CO.

SALES · LETTINGS · COMMERCIAL

- Boutique development
- Secure underground parking
- No chain
- Centrally located
- 18' Terrace

Tenure - Leasehold
 Lease length - 116 years
 Ground Rent - £400 pa
 Service Charge - £2700 pa
 Local authority - Hounslow
 Council Tax - Band F

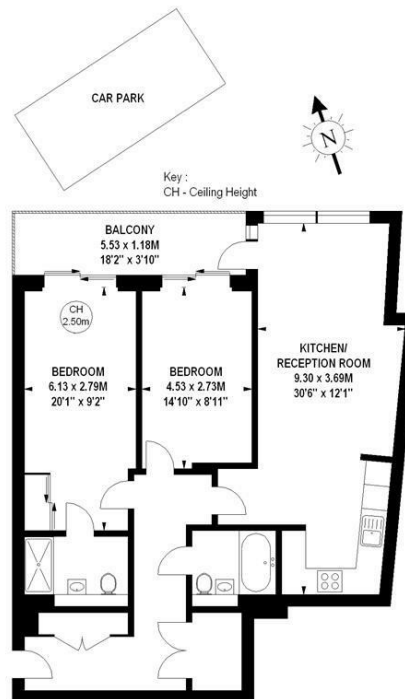
THE PROPERTY

A luxury two bedroom centrally located flat set within this boutique development of just 14 units, with the added benefit of secure underground parking. 20' Master bedroom with luxury wet room and terrace, Second double bedroom, Luxury bathroom, 24' Reception room, Fully integrated kitchen, 18' Terrace, Gated allocated underground parking, Communal roof terrace and summer room. Ideally situated in this central Chiswick location close to all amenities. No chain. EPC-B.

Noble House, W4

Approximate gross internal area

88.91 sq m / 957 sq ft



Second Floor

The floor plan is not to scale and measurements and areas shown are approximate and therefore should be used for illustrative purposes only. The plan has been prepared in accordance with the RICS code of Measuring Practice and whilst we have confidence in the information produced, it must not be relied on. If there is any aspect of particular importance, you should carry out or commission your own inspection of the property.
 Copyright of FeaturePRO.

SITUATION



5-7 Turnham Green Terrace, Chiswick, London, W4 1RG

Tel 020 8747 8800

E-mail sales@whitmanandco.com

Website www.whitmanandco.com



MISREPRESENTATION ACT 1967

Whitman & Co. for themselves and for the vendors give notice that these particulars do not constitute any part of, an offer of contract. All statements contained in these particulars are made without responsibility on the part of Whitman & Co. or the vendor. None of the statements contained in these particulars is to be relied upon as statements or representations of facts. Any intending purchaser must satisfy himself by inspection or otherwise as to the correctness of each of the statements contained in these particulars. The vendor does not make or give, and neither Whitman & Co. or any person in their employment has any authority to make or give, any representation or warranty whatever in relation to the property.