



Chiswick Mall, London, W4 2PF

£1,650,000

WHITMAN & CO.

SALES · LETTINGS · COMMERCIAL

- Five bedroom house with off street parking
- Large roof terrace
- Communal riverside garden
- Located in an exclusive riverside development
- 25' bespoke kitchen/dining room
- 16' reception room with full length windows

Tenure - Freehold
Local Authority -
Hammersmith & Fulham
Council Tax - Band G

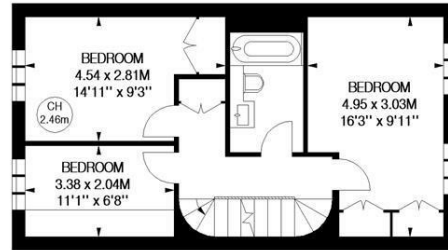
THE PROPERTY

An immaculately presented five bedroom townhouse situated within a private development on this picturesque stretch of the River Thames. Accommodation comprises a master suite, four further bedrooms, luxury bathroom, 16' reception room with feature full-length windows, large roof terrace, 25' bespoke kitchen/dining room, cloakroom, utility room, private landscaped garden, off-street parking, communal riverside garden. Ideally situated in this exclusive riverside development offering close proximity to numerous amenities.

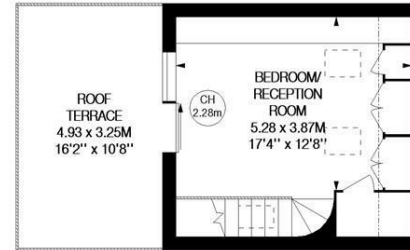
Millers Court, W4

Approximate gross internal area
179.76 sq m / 1935 sq ft

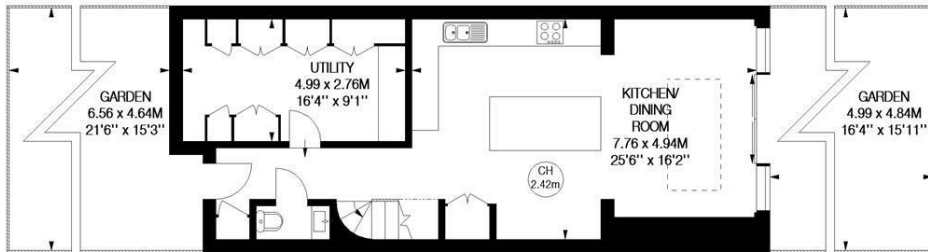
Key :
CH - Ceiling Height



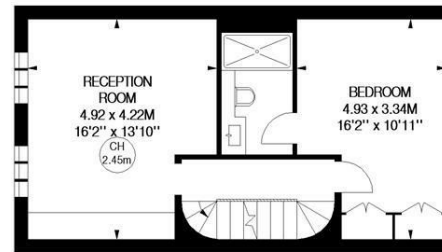
Second Floor



Third Floor



Ground Floor



First Floor

Not to scale, for guidance only and must not be relied upon as a statement of fact.
All measurements and areas are approximate only

SITUATION



5-7 Turnham Green Terrace, Chiswick, London, W4 1RG

Tel 020 8747 8300

E-mail sales@whitmanandco.com

Website www.whitmanandco.com



MISREPRESENTATION ACT 1967

Whitman & Co. for themselves and for the vendors give notice that these particulars do not constitute any part of, an offer of contract. All statements contained in these particulars are made without responsibility on the part of Whitman & Co. or the vendor. None of the statements contained in these particulars is to be relied upon as statements or representations of facts. Any intending purchaser must satisfy himself by inspection or otherwise as to the correctness of each of the statements contained in these particulars. The vendor does not make or give, and neither Whitman & Co. or any person in their employment has any authority to make or give, any representation or warranty whatever in relation to the property.