



Millington House, Dale Street, Manchester

Asking Price £170,000

Ascend
Built on higher standards

Millington House, Dale Street, Manchester

INVESTORS ONLY- Long Term Tenant.

This stunning Grade II listed conversion rests in the heart of Manchester's hip and vibrant Northern Quarter and is absolutely perfect for tenants looking to live in the thick of all the action.

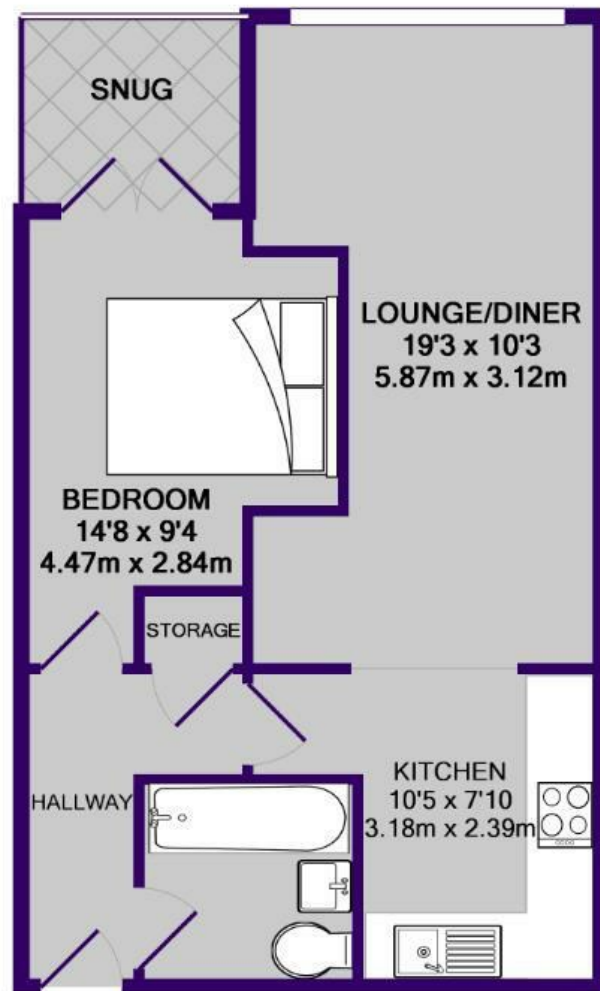
With tonnes of space to spare, this fab one bedroom apartment comes complete with large windows which show this apartment off to its full potential and give you plenty of Manchester's sunny skies. Inside you'll find a super-swish design throughout with high-quality, contemporary furniture. The double bedroom is bright and airy with more than enough room to spread out and the master bathroom is ultra-stylish and modern.

The location couldn't be more spot-on either. Piccadilly train station is literally just a 2 minute stroll away - how perfect is that? So whether it's for work or play, the whole of Manchester is your oyster.

If you're interested in having a closer look or have any questions, do get in touch. And just so you know, the pictures for this apartment are for marketing purposes only, so the internal fixtures, fittings and furnishings may vary.



Please note that we have not tested any apparatus, equipment, fixtures, fittings or services, and so cannot verify they are in working order or fit for their purpose. Furthermore solicitors should confirm moveable items described in the sales particulars are, in fact, included in the sale since circumstances do change during marketing or negotiations. A final inspection prior to exchange of contracts is also recommended. Although we try to ensure accuracy, measurements used in this brochure may be approximate. Therefore if intending purchasers need accurate measurements to order carpeting or to ensure existing furniture will fit, they should take such measurements themselves.

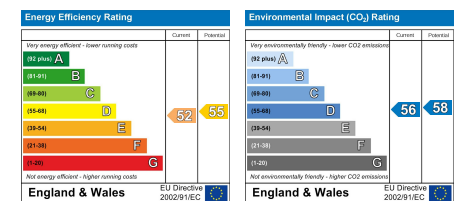
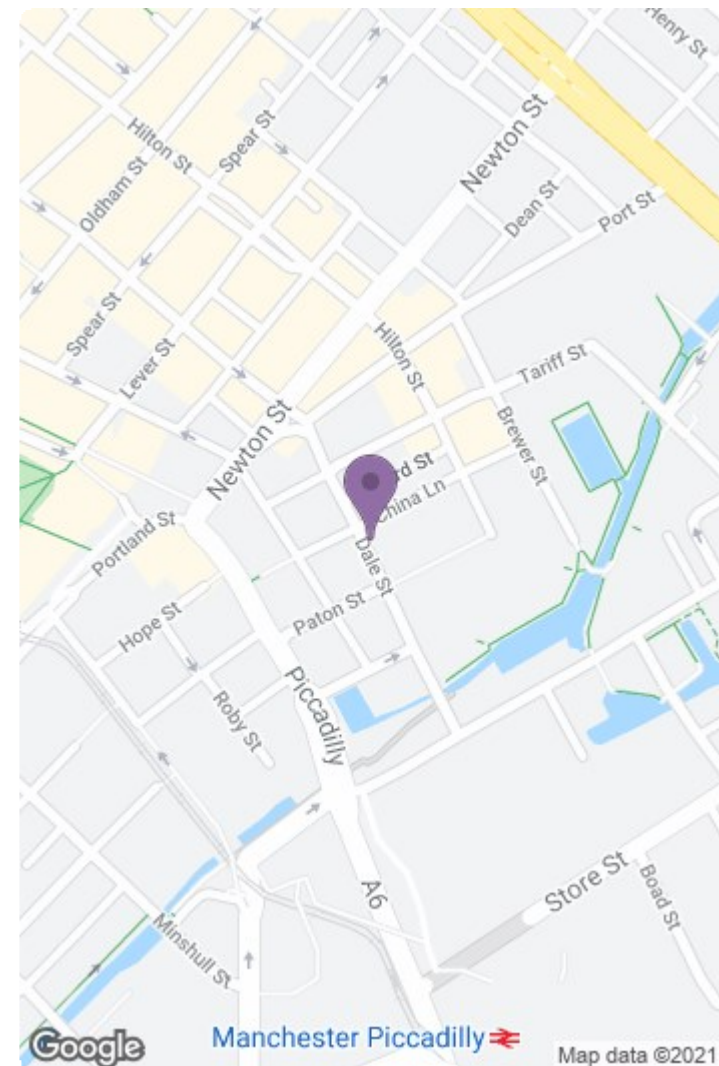


TOTAL APPROX. FLOOR AREA 453 SQ.FT. (42.1 SQ.M.)

Whilst every attempt has been made to ensure the accuracy of the floor plan contained here, measurements of doors, windows, rooms and any other items are approximate and no responsibility is taken for any error, omission, or mis-statement. This plan is for illustrative purposes only and should be used as such by any prospective purchaser. The services, systems and appliances shown have not been tested and no guarantee

as to their operability or efficiency can be given

Made with Metropix ©2019



241 Deansgate, Manchester, Lancashire, M3 4EL

Tel: 0161 637 8336

Email: contactus@ascendproperties.com

www.ascendproperties.com

Ascend
Built on higher standards

