



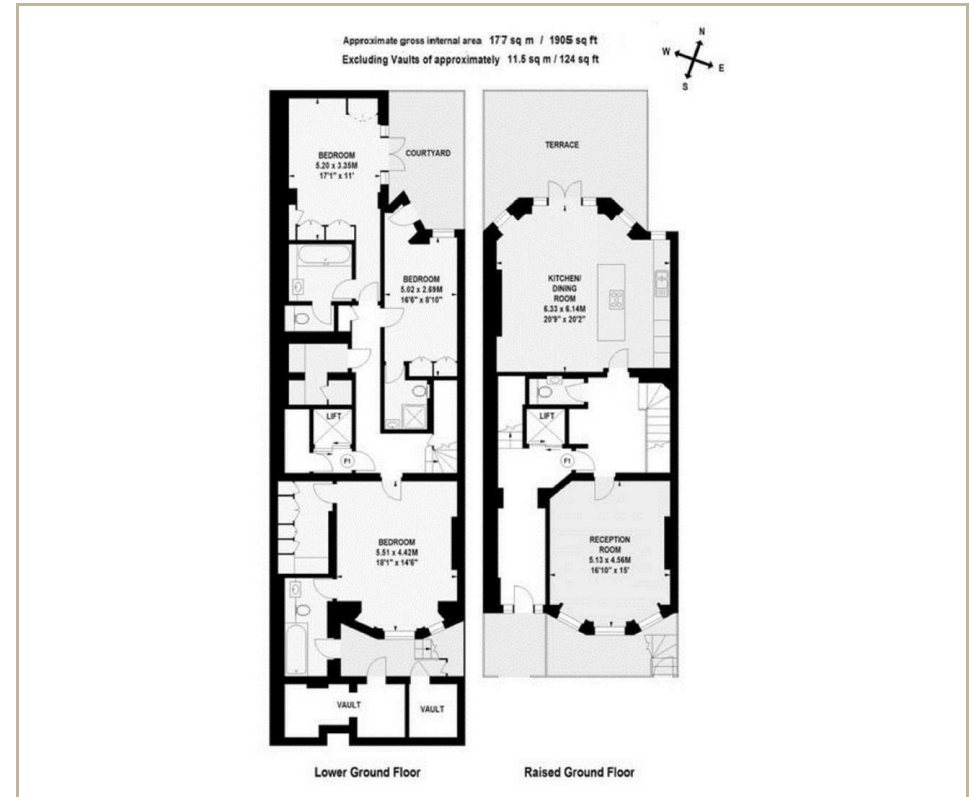
29 GREEN STREET,
LONDON, W1K
£7,150 Per Month

T. +44 (0) 20 7935 0011
E. enquire@napierwatt.co.uk
WWW.NAPIERWATT.CO.UK

NAPIER WATT
PROPERTY CONSULTANTS

Description

An impressive interior designed duplex apartment with an internal floor space covering 1,905 sq.ft/177 sq.m. finished to a very high standard. The apartment benefits from Comfort Cooling throughout, lift access, terrace with a large patio extending from the kitchen. Furthermore, it is enviably located in Mayfair, within close proximity to Hyde Park. At the landlords discretion and subject to terms pets will be considered.



TERMS

Fees & Charges: Tenancies exceeding £100,000 Per annum £480 inc VAT, Tenancies where a company is a tenant £480 Inc VAT.

For Clarification we wish to inform prospective purchasers that we have prepared these sales particulars as a general guide. We have not carried out a survey, nor tested the services, appliances and specific fittings. Room sizes are approximate and rounded: they are taken between internal wall surfaces and therefore include cupboards/shelves, etc. Accordingly, they should not be relied upon for carpets and furnishings. Formal notice is given that all fixtures and fittings, carpeting, curtains/blinds and kitchen equipment, whether fitted or not, are deemed to be removable by the vendor unless specifically itemised within these sales particulars.

T. +44 (0) 20 7935 0011
E. enquire@napierwatt.co.uk
WWW.NAPIERWATT.CO.UK

NAPIER WATT
PROPERTY CONSULTANTS