



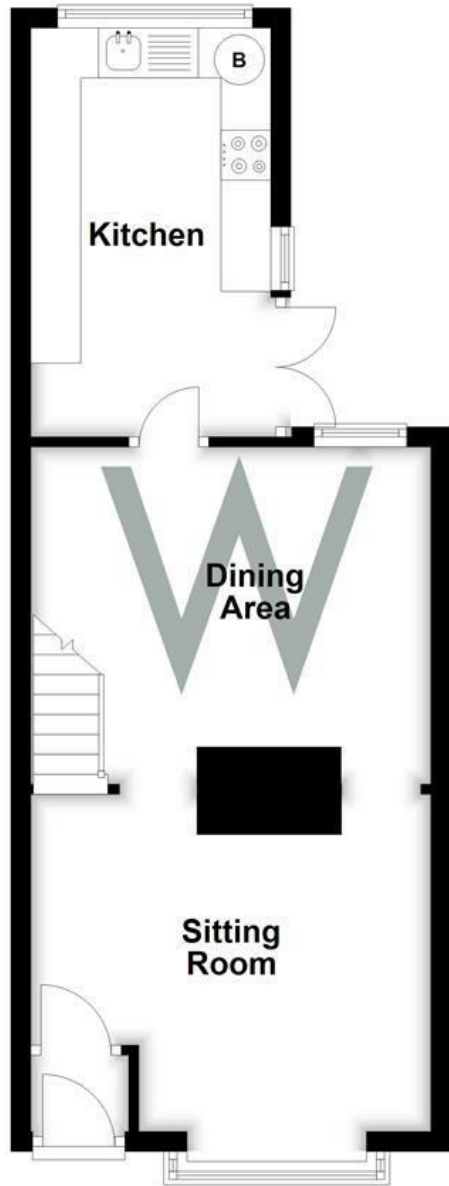
36 Harnham Road, Harnham, Salisbury, Wiltshire, SP2 8JJ

£895 PCM

A well presented 3 bed Victorian terraced property within the popular old Harnham area of the city. The accommodation comprises: entrance vestibule leading to an open plan sitting/dining room with parquet flooring and open fireplace. Kitchen with fridge/freezer, dishwasher, washing machine, electric oven and hob, tiled flooring and door to the garden. Enclosed rear garden with patio area, lawn , shed and rear pedestrian access. 2 double bedrooms, 1 small single and family bathroom with shower over the bath. Gas c/h and double glazed windows and doors throughout. Unfurnished.

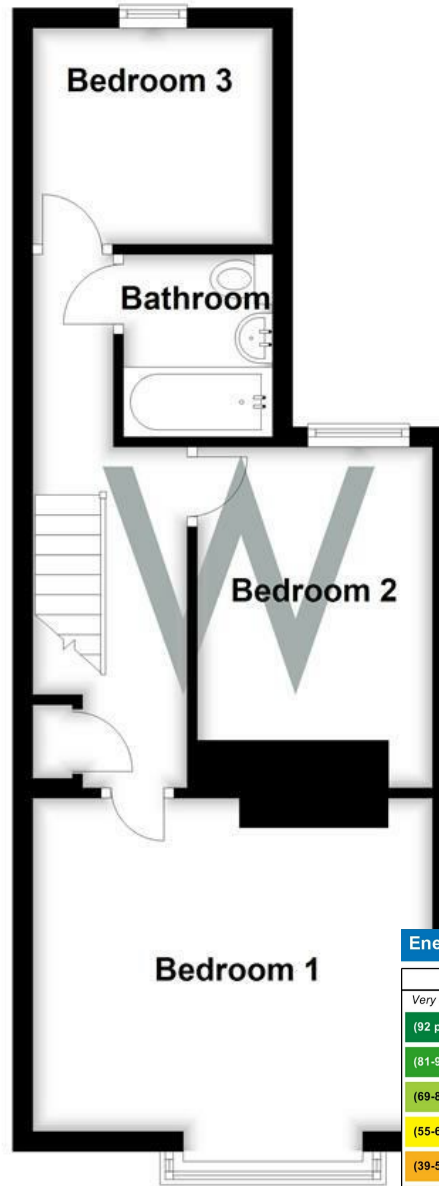
Ground Floor

Approx. 37.9 sq. metres (407.9 sq. feet)



First Floor

Approx. 37.9 sq. metres (407.9 sq. feet)



Total area: approx. 75.8 sq. metres (815.7 sq. feet)

Energy Efficiency Rating		Current	Potential
Very energy efficient - lower running costs			
(92 plus) A			87
(81-91) B			
(69-80) C		72	
(55-68) D			
(39-54) E			
(21-38) F			
(1-20) G			
Not energy efficient - higher running costs			
England & Wales		EU Directive 2002/91/EC	

WHITES
 Castle Chambers, 47 Castle Street,
 Salisbury, Wiltshire, SP1 3SP
 01722 336422
www.hwwhite.co.uk
residential-sales@hwwhite.co.uk

