



4B MERCHANT SQUARE,
PADDINGTON, W2
£3,770 Per Month

T. +44 (0) 20 7935 0011
E. enquire@napierwatt.co.uk
WWW.NAPIERWATT.CO.UK

NAPIER WATT
PROPERTY CONSULTANTS

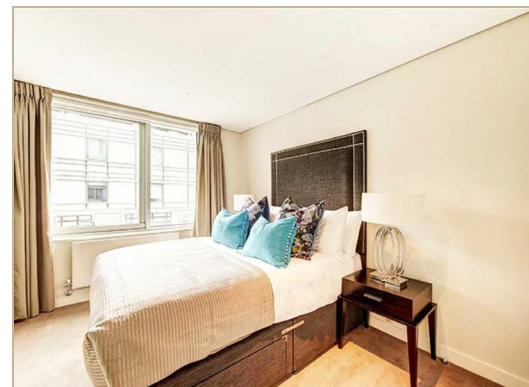
Description

We are pleased to offer this two bedroom / two bathroom (721 sq ft / 66.98 sqm) apartment situated on the 15th floor of this fabulous development in the very popular Merchant Square.

Building features include 24 hour concierge, lift service, and secure underground parking. The managing

agents also offer exclusive deals and discounts in local restaurants and gyms specifically to 4B Merchant square tenants.

Living in this building offers easy access to superb transport links such as Paddington Train Station (Bakerloo, Hammersmith & City, Circle, District lines and Heathrow) Edgware Road (Circle, District and Bakerloo lines).



TERMS

Additional costs will apply for; referencing (£36 per person & guarantor); administration (£240); renewal/extensions (£120); check-out inventory & cleaning (variable); special requests (variable). Security Deposits also apply to all tenancies.

For Clarification we wish to inform prospective purchasers that we have prepared these sales particulars as a general guide. We have not carried out a survey, nor tested the services, appliances and specific fittings. Room sizes are approximate and rounded: they are taken between internal wall surfaces and therefore include cupboards/shelves, etc. Accordingly, they should not be relied upon for carpets and furnishings. Formal notice is given that all fixtures and fittings, carpeting, curtains/blinds and kitchen equipment, whether fitted or not, are deemed to be removable by the vendor unless specifically itemised within these sales particulars.

T. +44 (0) 20 7935 0011
E. enquire@napierwatt.co.uk
WWW.NAPIERWATT.CO.UK

NAPIER WATT
PROPERTY CONSULTANTS