



**Chester Drive, North Harrow**

**£700,000 Freehold**

**Refreshingly SPACIOUS, this LARGE FAMILY HOME benefits from TWO RECEPTIONS, THREE BEDROOMS, a STUNNING BATHROOM with shower and a separate 1st floor CLOAKROOM. A GARAGE OWN DRIVEWAY provides OFF ROAD PARKING for two to three cars.**

**Enviably set in a highly COVETED LOCATION Chester Drive is a short walk from both North Harrow and Pinner's transport links into Central London. The area's leading schools at Longfield, St John Fisher and Nower Hill are also moments away.**

- Attractive detached house • Two reception rooms • Three good sized bedrooms • Spacious modern bathroom • Double glazing • Gas central heating • Own driveway to garage • Off road parking • Sought after residential side road • Convenient for North Harrow and Rayners Lane



**Chester Drive, North Harrow**

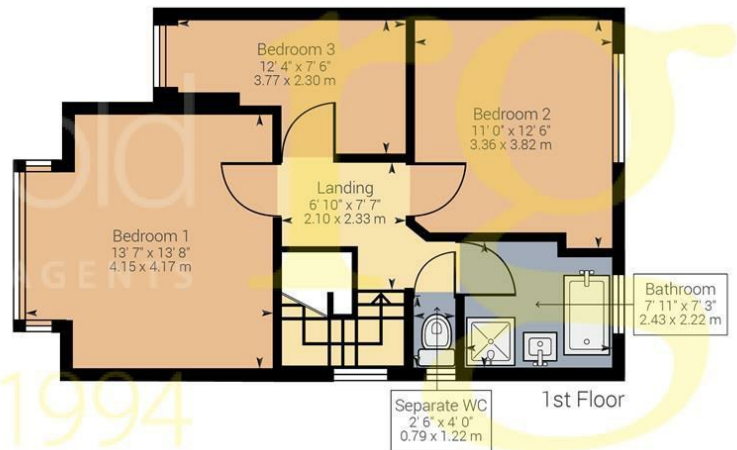
**£700,000 Freehold**







Ground Floor



1st Floor

Approximate net internal area: 1056.57 ft<sup>2</sup> / 98.16 m<sup>2</sup>

While every attempt has been made to ensure accuracy, all measurements are approximate, not to scale. This floor plan is for illustrative purpose only and should be used as such by any prospective tenant or purchaser.



Powered by Giraffe360