



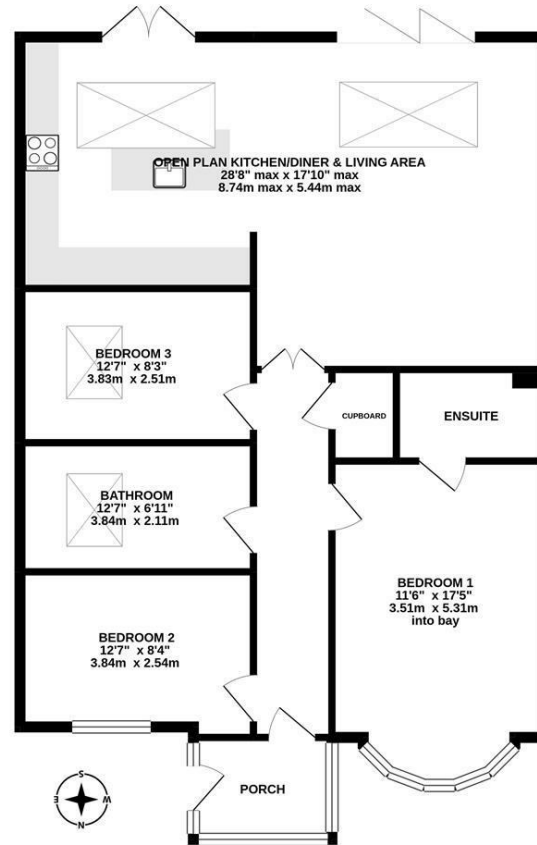
Super Stylish, Extended Three Bedroom Semi-Detached Bungalow with 28ft Open Plan Kitchen/Diner Living Area & South Facing Rear Gardens! Offered to the market with no onward chain and ideally located on the desirable Ashwood Grove, North Gosforth. Ashwood Grove, situated well within the Woodlands Park estate, is placed close to local amenities and transport links.

Boasting over 1,100 Sq ft, the internal accommodation briefly comprises: Entrance porch through to entrance hall with storage cupboard; impressive 28ft open plan kitchen/diner living area with bi-fold and French doors leading out to the south facing garden, kitchen area with stylish fitted wall and base units and work surfaces, some integrated appliances, breakfasting island, spot lighting and two Velux windows; three double bedrooms, bedroom one with walk in bay and En-suite shower room with three piece suite; bathroom with four piece suite including free standing bath and walk in shower. Externally to the front, a driveway to the front providing off-street parking with gravelled garden and planting. To the rear, a garden with fenced boundaries, artificial grass, paved patios and planting. Offered to the market with no onward chain and with gas 'combi' central heating and no onward chain, an internal inspection is essential.

Extended Semi-Detached Bungalow | 1,115 Sq ft (103.6m²) | Three Double Bedrooms | Impressive 28ft Open Plan Kitchen/Diner & Living Area | Bathroom with Four Piece Suite & En-Suite Shower Room | Driveway | South Facing Rear Garden | GCH & DG | No Onward Chain | Super Stylish Presentation | EPC: D

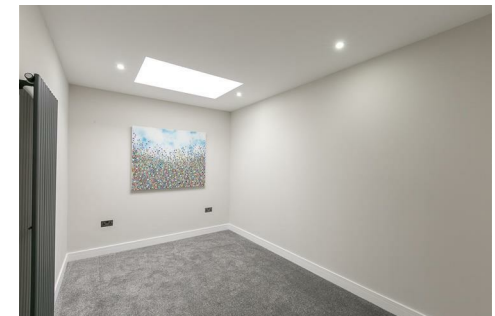
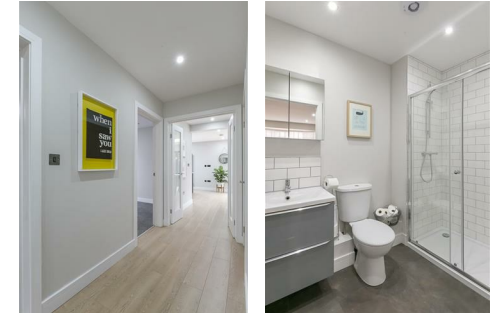


GROUND FLOOR
1115 sq.ft. (103.6 sq.m.) approx.



TOTAL FLOOR AREA: 1115 sq.ft. (103.6 sq.m.) approx.

Whilst every attempt has been made to ensure the accuracy of the floorplan contained here, measurements of doors, windows, rooms and any other items are approximate and no responsibility is taken for any error, omission or mis-statement. This plan is for illustrative purposes only and should be used as such for any prospective purchaser. The services, systems and appliances shown have not been tested and no guarantee as to their operability or efficiency can be given.
Made with Metropix ©2020



Offers Over £235,000

IMPORTANT NOTE: These particulars and the descriptions and measurements herein do not constitute representation and whilst every effort has been made to ensure accuracy, this cannot be guaranteed.

