



## Upper Berkeley Street, Marylebone, W1H

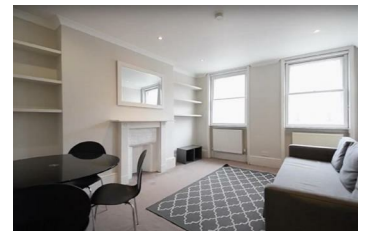
**£375 Per Week**

Recently refurbished third floor flat in the heart of Marylebone comprising a bright reception, a separate modern fitted kitchen, a double bedroom and a fully-tiled bathroom.

This is a popular area situated just off Oxford Street and overlooking the cafes and shops of Upper Berkeley Street.

The property is situated on a popular residential area with local transport links including Marble Arch underground station (Central line), Bond Street underground station (Jubilee and Central lines) and Edgware Road (Bakerloo, Circle, District and Hammersmith & City lines.)

- Recently refurbished
- Double bedroom
- Easy access to 3 underground stations
- Bright reception
- Fully tiled bathroom
- Separate fitted kitchen
- Close to many amenities



Energy Efficiency Rating		Environmental Impact (CO <sub>2</sub> ) Rating	
Current	Potential	Current	Potential
<b>A</b>	<b>A</b>	<b>B</b>	<b>B</b>
100 kWh/m <sup>2</sup> per year (lower is better)	100 kWh/m <sup>2</sup> per year (lower is better)	100 g/m <sup>2</sup> per year (lower is better)	100 g/m <sup>2</sup> per year (lower is better)
Not energy efficient - Higher heating costs	Very energy efficient - Lower heating costs	Not environmentally friendly - Higher CO <sub>2</sub> emissions	Very environmentally friendly - Lower CO <sub>2</sub> emissions
England & Wales	England & Wales	England & Wales	England & Wales