



the
ACCOMMODATION
BUREAU

7 Turf Street, Bodmin, PL31 2DJ

Tel : 01208 78480

Fax : 01208 78985

bodmin@theaccommodationbureau.com

www.theaccommodationbureau.com



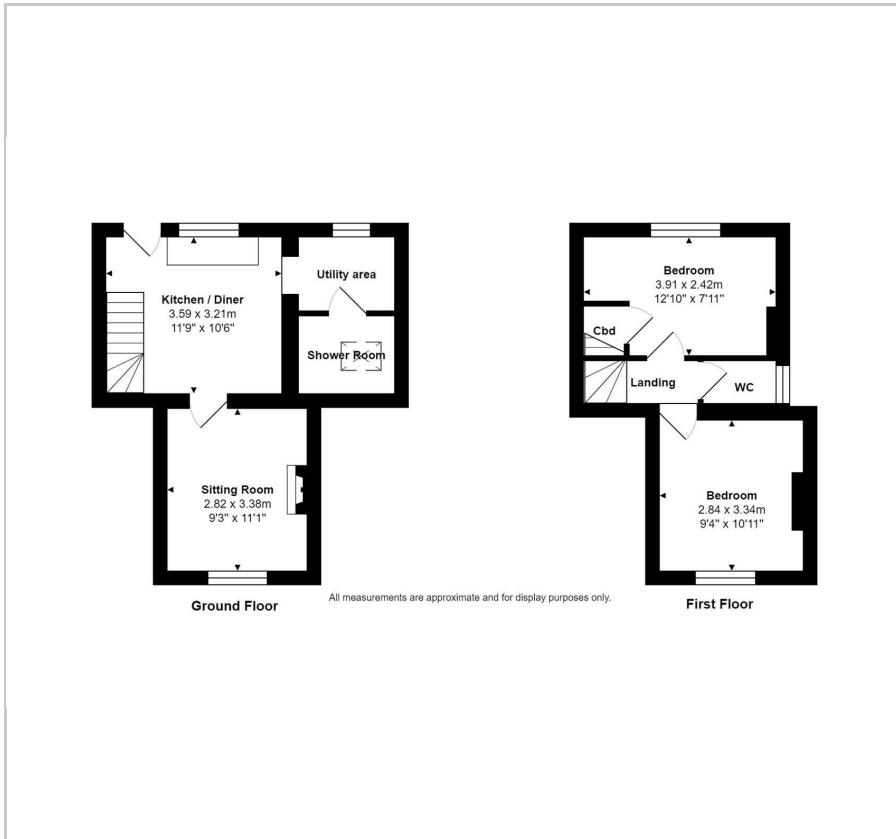
Lowenna Cottage Guineaport Road

Wadebridge, PL27 7BW

£650 PCM



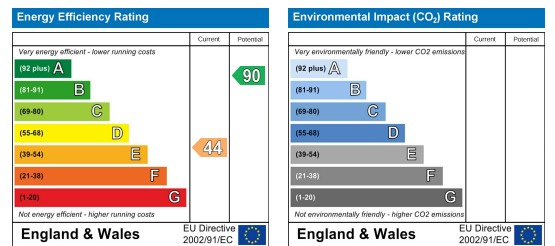
Floor Plan



Area Map



Energy Efficiency Graph



Viewing

Please contact our Bodmin Office on 01208 78480 if you wish to arrange a viewing appointment for this property or require further information.

- Traditional Cornish cottage
- Only a short walk to Wadebridge town centre
- One allocated parking space
- Electric heating
- Two bedrooms
- Garden with summerhouse



Online viewing available! A traditional 2 bedroom semi-detached Cornish cottage within walking distance of the town centre.

This charming cottage offers cosy accommodation in a tucked away location. The property is accessed by steps down from the parking area. Inside, the property comprises of the front door leading into the kitchen/breakfast room which features an ornamental range, a beamed ceiling and a slate floor. The kitchen includes an electric cooker. The kitchen leads to the utility area which has plumbing for a washing machine and space for a fridge/freezer. The shower room is also on the ground floor & has a tiled floor. The lounge has a feature electric wood burner.

Steep stairs lead up to the W.C. and two bedrooms, one with large wardrobes. Electric heating throughout. To the front, there is a well maintained garden laid mainly to lawn with a summerhouse. One allocated parking space.

Energy Rating E(44). Council Tax Band A. Deposit £750.

Sorry, no smokers or sharers. 1 small pet considered by negotiation.



These particulars, whilst believed to be accurate are set out as a general outline only for guidance and do not constitute any part of an offer or contract. Intending purchasers should not rely on them as statements of representation of fact, but must satisfy themselves by inspection or otherwise as to their accuracy. No person in this firm's employment has the authority to make or give any representation or warranty in respect of the property.