



Lisle Street, Chinatown, WC2H
£500 pw

> 1 Bedroom > 1 Bathroom > Unfurnished

TAVISTOCKBOW
RESIDENTIAL



- › One bedroom
- › One shower room
- › Fourth floor (no lift) (with lift)
- › Built in storage
- › Lots of natural light
- › Unfurnished
- › Wooden floors throughout
- › Recently refurbished
- › Close to Leicester Square & Piccadilly Circus station
- › Available late March

Recently refurbished, this one bedroom flat on the 4th floor of this period building is located in the heart of China Town. Featuring one double bedroom with built in storage, modern shower room and an open plan reception/kitchen room with integrated appliances. The flat is available late March and is unfurnished, 3 year contract

with a 6 months mutual break clause.

Council tax band E.





WHAT WE LOVE

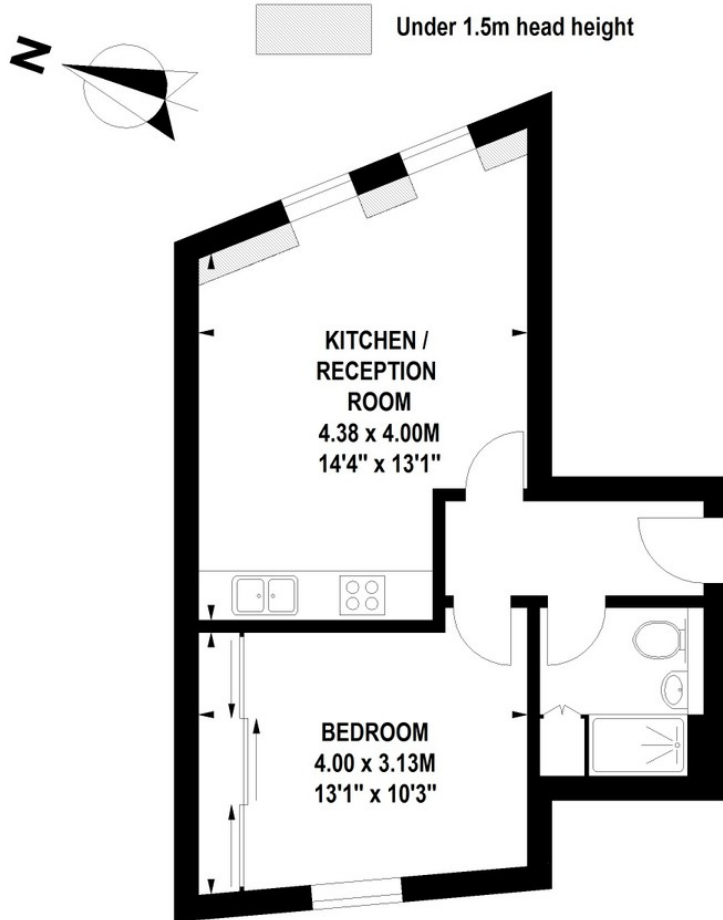
Recently refurbished
Lots of natural light
Modern bathroom and kitchen
In the heart of the Chinatown district
Built in wardrobes.

WHAT YOU NEED TO KNOW

Above Ku Bar
Walk up - 4th floor
Large bedroom
Wooden flooring throughout
Westminster Council Tax

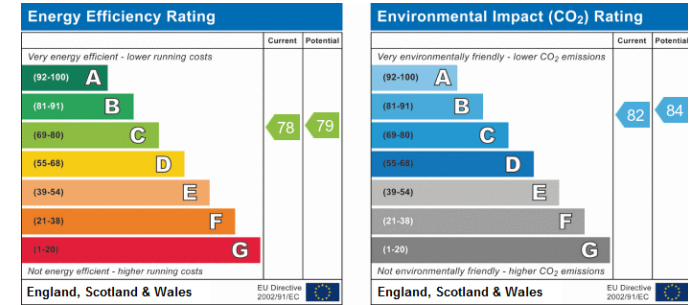
Lisle Street, WC2

Approximate Gross Internal Area 41 sq m / 441 sq ft



Fourth Floor




Floor Plan produced for Tavistock Bow by Mays Floorplans © . Tel 020 3397 4594
Illustration for identification purposes only, not to scale
All measurements are maximum, and include wardrobes and window bays where applicable



About Us

Tavistock Bow is an independent residential agency based in Covent Garden. We are niche, boutique, creative, knowledgeable, professional and approachable. We love what we do and that's why we do it.

Contact Us

- a.** 21 New Row, Covent Garden, WC2N 4LE
 - t.** 020 7477 2177
 - e.** hello@tavistockbow.com
 - w.** tavistockbow.com
-  /tavistockbow
 /tavistockbow
 @tavistockbow