



Mowson Crescent
Worrall, S35 0AG

0114 232 1764
morfittsmith.co.uk





A dazzling property decorated with loving attention to detail: Mowson Crescent.

This gorgeous 3-bed occupies a highly sought-after location in Worrall, with beautiful interiors and a lovely green garden with a gazebo.



Why you'll love it:

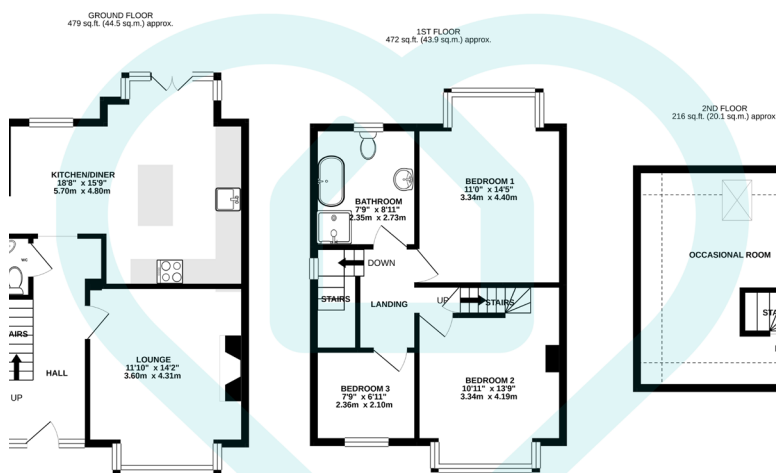
Mowson Crescent can be found in the idyllic community of Worrall, north-west of the city centre. Worrall is a lovely little community with a wealth of green spaces nearby, including Sycamore Park and the breath-taking Wadsley and Loxley Commons. It also boasts some excellent links thanks to its proximity to Oughtibridge and Middlewood, giving you access to the excellent bus links and SuperTram service on offer. This allows you easy access to the city centre whilst retaining an exceptionally peaceful base of operations, making this the perfect choice for families or commuters. With a range of lovely local restaurants and all the wealth of amenities in Oughtibridge and Middlewood, you are spoiled for choice when it comes to conveniences and entertainments. Mowson Crescent features a gorgeous front garden lawn and an immense garage/ driveway, making city exploration an easy venture.



So much more than a great location:

Mowson Crescent opens onto a wide hall with a WC and a wonderful sense of light and space. From here you enter the lounge, an elegant room with a fireplace and lovely views over the front garden. Passing through the hall with its under-the-stairs WC you will enter the impressive kitchen/diner, stretching the full width of the home, boasting stunning garden views. This is a spectacular space featuring sleek kitchen fittings, a modern island unit and plenty of space for seating. French doors open out onto the rear garden. This beautiful expanse features attractive patio, a vibrant green lawn and even an attractive gazebo with seating and its own hot tub for dining or relaxing outdoors. Upstairs you will find three bedrooms: bedrooms 1 and 2 are generous in size with abundant natural light, while bedroom 3 is currently in use as an adorable home office. An immaculate four-piece suite with pristine fixtures completes this floor. On the second floor is a stunning occasional room that is currently in use as a bedroom. This is a large space featuring lots of room for storage and a bright skylight.

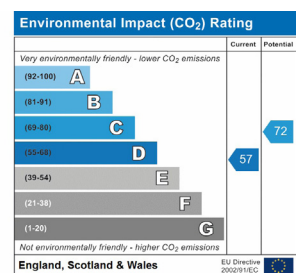
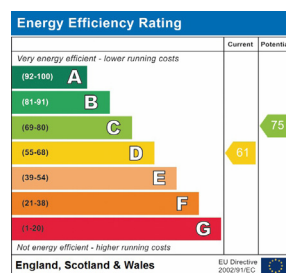




TOTAL FLOOR AREA : 1167 sq.ft. (108.4 sq.m.) approx.

Whilst every attempt has been made to ensure the accuracy of the floor plan contained here, measurements of doors, windows, rooms and any other items are approximate and no responsibility is taken for any error, omission or mis-statement. This plan is for illustrative purposes only and should be used as such by any prospective tenant/ purchaser.

Made with Metropix, morfittsmith
Estate & Letting Agent



we are morfittsmith

The MorfittSmith Building
67 Middlewood Road
Hillsborough
Sheffield S6 4GX
sales@morfittsmith.co.uk
0114 232 1764

Sales
Lettings
New Homes

BEST
ESTATE AGENT GUIDE
2020 : EXCEPTIONAL
LETTINGS

**BRITISH
PROPERTY
AWARDS**
2019 - 2020
★★★★★
GOLD WINNER
LETTING AGENT
IN SHEFFIELD
(57-11)

IMPORTANT: we would like to inform prospective purchasers that these sales particulars have been prepared as a general guide only, A detailed survey has not been carried out, nor the services, appliances and fittings tested. Room sizes should not be relied upon for furnishing purposes and are approximate. If floor plans are included, they are for guidance only and illustration purposes only and may not be to scale. If there are any important matters likely to affect your decision to buy, please contact us before viewing the property.