



East Street, Chichester, West Sussex

todanste.com 01243 523723



**Tod
Anstee**

Property Consultants

East Street, Chichester, West Sussex

A contemporary two bedroom, second floor, apartment (752 sq ft) within the historic city walls of Chichester.

2 bedrooms (one en suite) | open plan kitchen/sitting room | entrance hall | bathroom



Distances & Transport:

The Cross (central Chichester): 0.1 miles | Chichester Station: 0.2 miles | Goodwood: 2 miles | West Wittering: 7.9 miles | Gatwick Airport: 47 miles | Central London: 67 miles

All distances are approximate





Description:

The light and very modern accommodation is arranged over one floor and offers elevated, contemporary city living within the heart of Chichester's historic and vibrant city centre.

The accommodation comprises of an entrance hall (with storage cupboard), leading to a spacious open plan reception/dining room complete with a modern fitted kitchen and two large sash windows offering elevated south facing views over East Street and beyond. The flat has 2 deceptively spacious bedrooms, one of which has an en-suite shower room. A contemporary and cleverly designed family bathroom with stylish hidden lighting completes the accommodation.



Situation:

Historic Chichester is home to some of the country's finest sights, landscapes and leisure pursuits. The internationally known Festival Theatre, Priory Park with its' historic cricket ground and Pallant House Gallery are just a few examples of the nearby facilities. There are excellent schools in the area. In the private sector are Prebendal, Oakwood, Great Ballard, Lavant House, Westbourne House School, Portsmouth Grammar and Bedales. Secondary schools in the public sector in Chichester are Bishop Luffa Church of England and the Girls and Boys High Schools. Chichester is unique in having both a College of Further Education and a University. There are also good yachting facilities at Chichester Marina, Birdham Pool and at Itchenor, home to the Chichester Harbour Conservancy and the Itchenor Sailing Club. The Salterns Way footpath and cycle route is a 12 mile path running from Chichester via Fishbourne to Birdham, Itchenor and on to the lovely sandy Blue Flag beach at West Wittering. At Chichester it connects with the Centurion Way to provide access to the South Downs National Park.



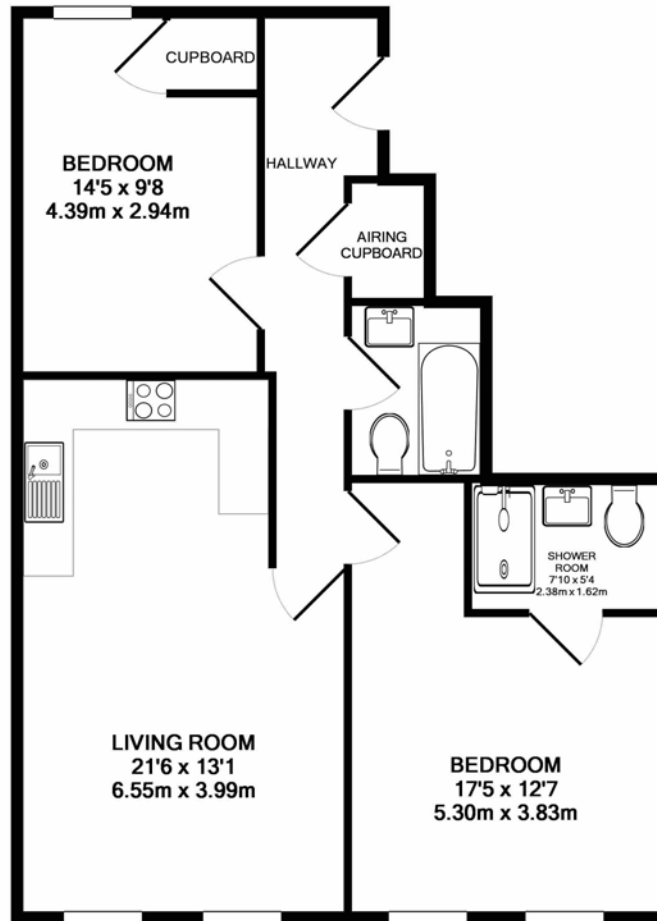
nearby Chichester Cathedral

viewing strictly by
appointment

General Information

LEASEHOLD
EPC Rating: C

Postcode:
PO19 1HX
Services:
Mains drainage / water
Chichester District Council:
01243 785166
West Sussex County Council:
01243 777100



TOTAL APPROX. FLOOR AREA 752 SQ.FT. (69.9 SQ.M.)

Whilst every attempt has been made to ensure the accuracy of the floor plan contained here, measurements of doors, windows, rooms and any other items are approximate and no responsibility is taken for any error, omission, or mis-statement. This plan is for illustrative purposes only and should be used as such by any prospective purchaser. The services, systems and appliances shown have not been tested and no guarantee as to their operability or efficiency can be given
Made with Metropix ©2017



todanstee.com

01243 523723

sales@todanstee.com

Tod Anstee Property Consultants Ltd for itself and as agent for the vendor or lessor gives notice that: 1. These particulars are only a general outline for the guidance of intending purchasers or lessees and do not constitute in whole or in part an offer or Contract. 2. Reasonable endeavours have been made to ensure that information in these particulars is materially correct but any intending purchaser or lessee should satisfy himself by inspection, searches, enquiries and survey. 3. All statements in these particulars are made without responsibility on the part of Tod Anstee Property Consultants Ltd or the vendor or lessor. 4. No statement in these particulars is to be relied upon as a statement or representation of fact. 5. Neither Tod Anstee Property Consultants Ltd nor anyone in its employment or acting on its behalf has authority to make any representation or warranty in relation to this property. 6. Nothing in these particulars shall be deemed to be a statement that the property is in good repair, condition or otherwise nor that any services or facilities are in good working order. 7. Photographs may show only certain parts and aspects of the property at the time when taken and you should rely upon actual inspection. 8. No assumption should be made in respect of parts of the property not shown in photographs. 9. Areas, measurements or distances are only approximate. 10. Any reference to alterations or use is not intended to be a statement that any necessary planning, building regulation, listed building or any other consent has been obtained. 11. Amounts quoted are exclusive of VAT if applicable.

The Old Coach House, 14 West Pallant, Chichester, West Sussex, PO19 1TB