



20 HENRY STREET,
TOTTERDOWN, BS3 4UD

**GOODMAN
& LILLEY**



A WONDERFUL TWO BEDROOM VICTORIAN HOME WITH ATTRACTIVE REAR GARDEN LOCATED IN THE POPULAR AREA OF TOTTERDOWN.

Location

Excellent location just 10 minutes walk from Temple Meads/Bristol and 5 minutes from the great open space of Victoria Park. Totterdown is a popular location with first time buyers and young families alike.

Accommodation

Ground Floor

Entrance

Via main front door to an inner porch with glazed inner door to the entrance hallway.

Entrance Hall

With exposed floorboards, stairs to the first accommodation, feature ceiling plaster work and door to a useful cellar storage room with beautiful flag stone floors, further doors to all downstairs rooms.

Sitting Room

With double glazed bay window to the front aspect, feature tiled period fireplace, exposed floor boards, built in storage cupboard, radiator.

Living Room

Exposed floorboards, built in storage cupboard, fitted log burning stove to the fireplace. Opening into the dining area and on to the kitchen.

Dining Area

Exposed floorboards, lantern window to ceiling, double glazed, double doors and windows to the rear. Access from the kitchen and living room.

Kitchen

Fitted kitchen with wall and base units, wooden work tops, sink unit, space for range cooker, plumbing for dish washer and washing machine,

double glazed window to the rear. Access from dining area and main hallway.

Cellar

Useful storage, potential to convert.

First Floor

Landing

Skylight window, doors to all first floor rooms.

Bedroom One

Double glazed windows to the front aspect with views, feature fireplace, radiator, stripped exposed floorboards, built in storage cupboard.

Bedroom Two

Double glazed window to the rear aspect, feature fireplace, radiator, built in storage cupboard.

Bathroom

Wonderfully fitted out with a quality four piece white suite that includes a feature free standing bath, walk in shower with glass screen, low level WC, and wash basin. Double glazed window to the rear, centrally heated towel rail / radiator.

Outside

Gardens

There are gardens to both the front and rear of the property. The front garden sets the house back from the road and the attractive rear garden is fully enclosed and offers a raised deck.

-
- Sought After Location
 - Two Double Bedrooms
 - Separate Sitting Room
 - Superb Bathroom
 - Period Mid Terrace
 - Open Plan Living
 - Cellar
 - No Chain

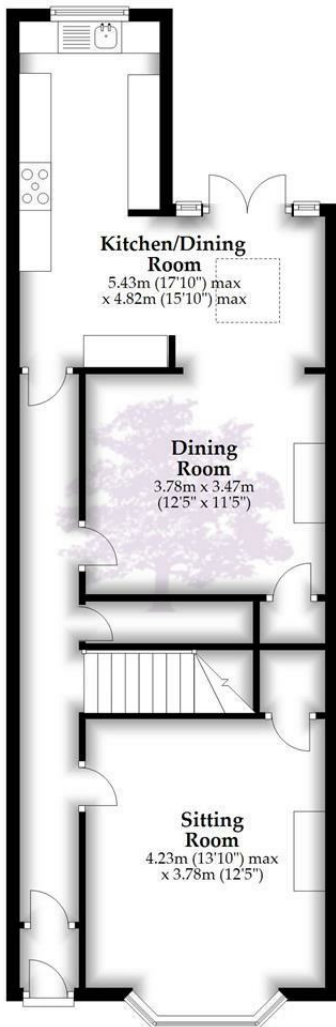


£350,000



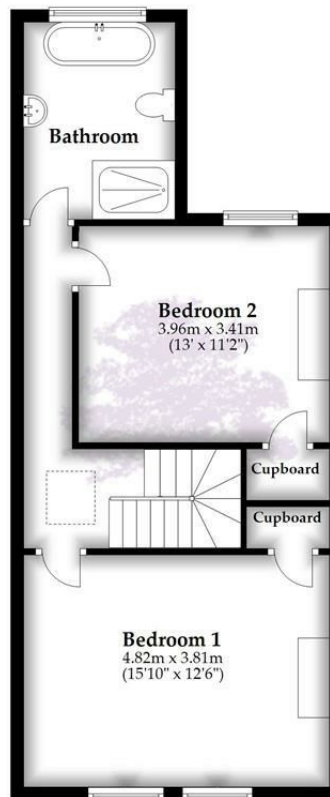
Ground Floor

Approx. 66.1 sq. metres (711.6 sq. feet)



First Floor

Approx. 50.9 sq. metres (547.8 sq. feet)



Total area: approx. 117.0 sq. metres (1259.4 sq. feet)

HENLEAZE - 0117 2130777

henleaze@goodmanlilley.co.uk

PORTISHEAD - 01275 430440

sales@goodmanlilley.co.uk

SHIREHAMPTON - 0117 2130333

shire@goodmanlilley.co.uk

Zoopla.co.uk

rightmove



WWW.GOODMANLILLEY.CO.UK

These particulars are for general guidance only. They do not form or constitute any part of an offer or contract. Goodman & Lilley has not carried out structural surveys of the property. The services, appliances or specific fittings mentioned in these details have not been tested. Every attempt is made to ensure accuracy, however all photographs, measurements, floor plans and distances are for illustrative purposes only. They must not be relied upon when purchasing carpets and or other fixtures & fittings. Lease details, service charges and ground rents are given as a guide only. They should be checked and confirmed by a licensed solicitor prior to exchange of contracts. The copyright of all details, photographs and floor plans remain exclusive to Goodman & Lilley.