



Dale Street, London, W4 2BL

£1,095,000

WHITMAN & CO.

SALES · LETTINGS · COMMERCIAL

- Potential to extend and remodel
- Perfect position in the Glebe Estate
- Large loft
- Private garden
- 26' Through reception room
- No chain

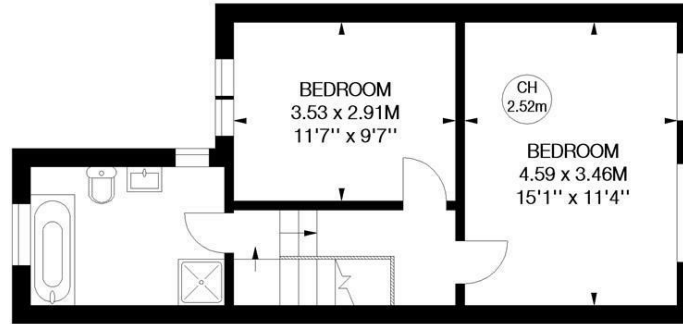
Tenure - Freehold
 Local Authority - Hounslow
 Council Tax - Band F

THE PROPERTY

A pretty Victorian cottage in the perfect location in the Glebe Estate. Offering the ingoing purchaser the opportunity to extend and remodel, STPP, the accommodation comprises 26'2 through reception room, kitchen/breakfast room, private garden, full-width master bedroom, second double bedroom, family bathroom with separate shower, further shower room, large loft. Situated at the north end of Dale Street, the house is moments from the Devonshire Road's boutique shops, cafes and restaurants and Chiswick High Road's more extensive facilities. Transport links include Turnham Green Station, local bus routes and the A4/M4 for routes in and out of London. No chain.

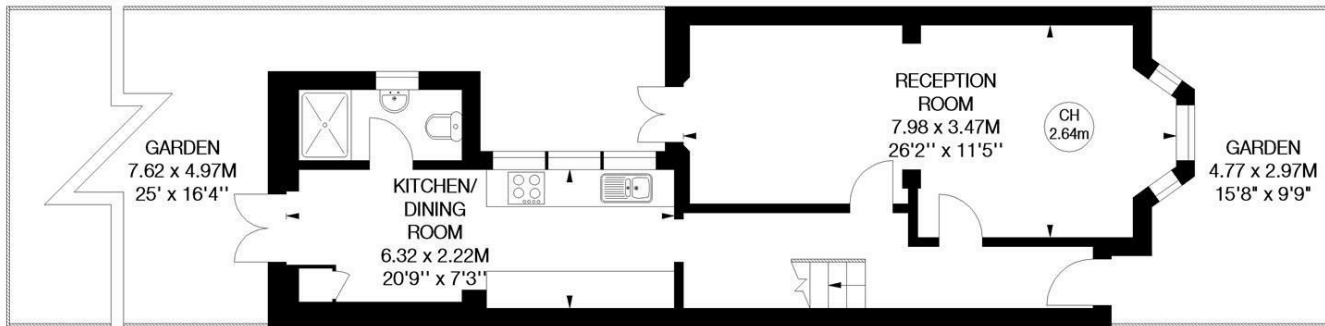
Dale Street, W4

Approximate gross internal area
 91.79 sq m / 988 sq ft



First Floor

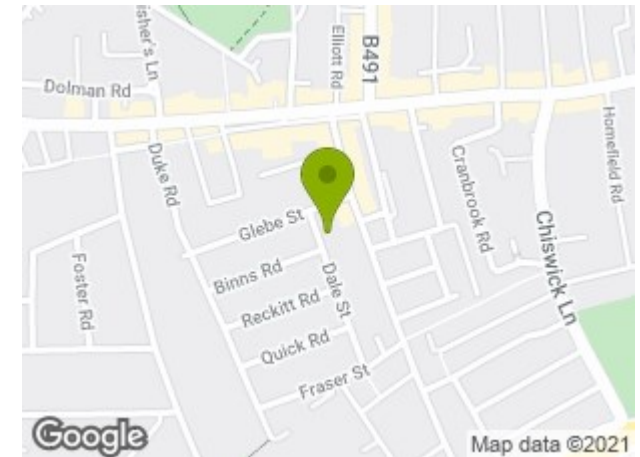
Key :
 CH - Ceiling Height



Ground Floor

Not to scale, for guidance only and must not be relied upon as a statement of fact.
 All measurements and areas are approximate only

SITUATION



5-7 Turnham Green Terrace, Chiswick, London, W4 1RG
 Tel 020 8747 8800

E-mail sales@whitmanandco.com
 Website www.whitmanandco.com