



Romney House, Westminster
London SW1P

GARTONJONES.COM



Romney House, Westminster London, SW1P

GARTON JONES.COM

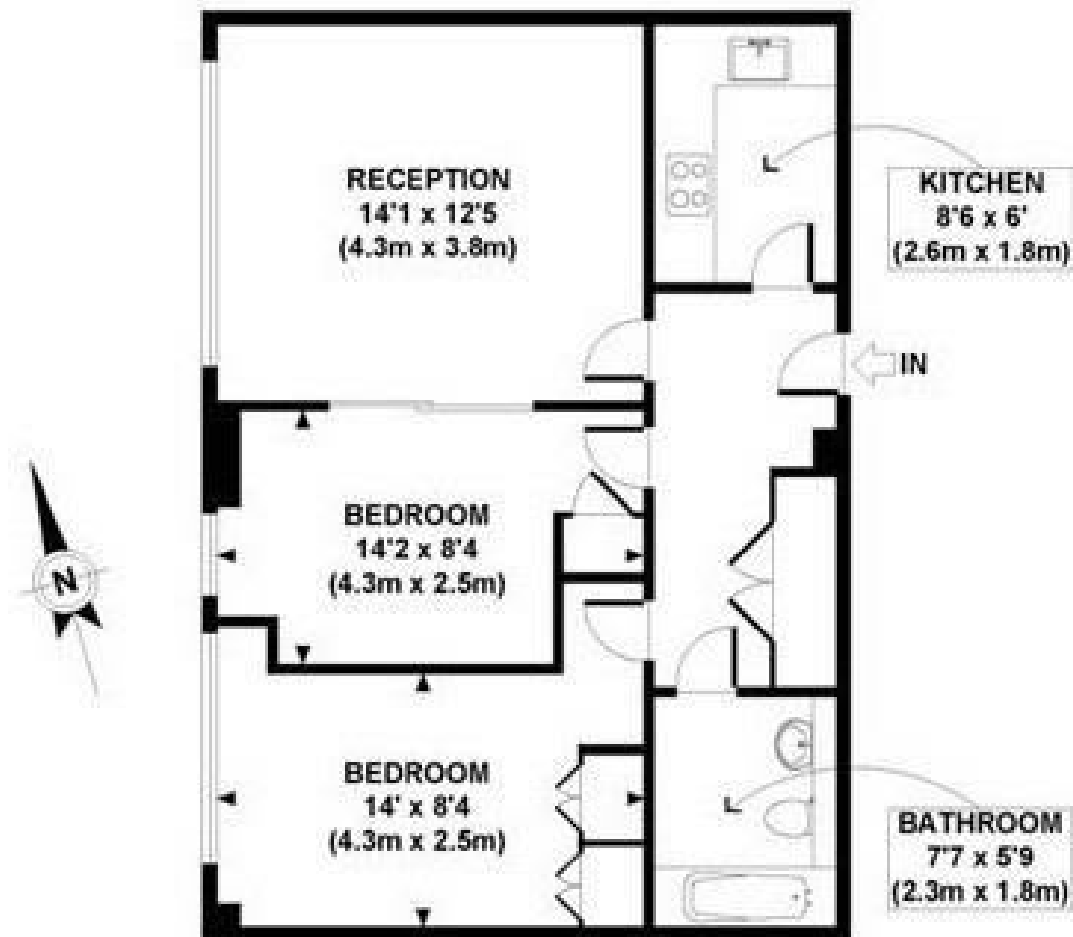
49 Marsham Street Lettings:
London +44 (0) 20 7340 0480
SW1P 3DP westminster@gartonjones.com
www.gartonjones.com

£450 Per Week

A well presented apartment to rent of approx. 608sq.ft (57sq.m) located on the 1st floor (with lift) of this popular development in the heart of Westminster. This furnished property further comprises of an open plan reception room with a smart integrated kitchen, there are 2 bedrooms both with fitted wardrobes, a bathroom, wood flooring and ample storage. Residents will also benefit from a the use of a 24 hour concierge and a fully equipped fitness suite with a gym, sauna and a treatment room. Romney House is fortunate to be in a superb location, being only 10 minutes from St James's Park, Victoria and Westminster transport links, as well as only a short walk from many local amenities including shops and restaurants. Marsham Street is also within close proximity to attractions such as Westminster Abbey, Big Ben, the Tate Gallery and universities such as LSE and King's College.

- 608sq.ft (57sq.m)
- 1st Floor (With Lift)
- 2 Bedroom Apartment
- Open Plan Reception Room
- Smart Integrated Kitchen
- Modern Bathroom
- 24 Hour Concierge
- Resident's Leisure Suite with Gym, Sauna & Treatment Room
- Close to Local Amenities Including Shops, Restaurants & Transport Links
- Walking Distance to St James's Park, Westminster & Victoria Rail/Tube Links





FIRST FLOOR
GROSS INTERNAL
FLOOR AREA 608 SQ FT

APPROX. GROSS INTERNAL FLOOR AREA 608 SQ FT / 57 SQ M

