

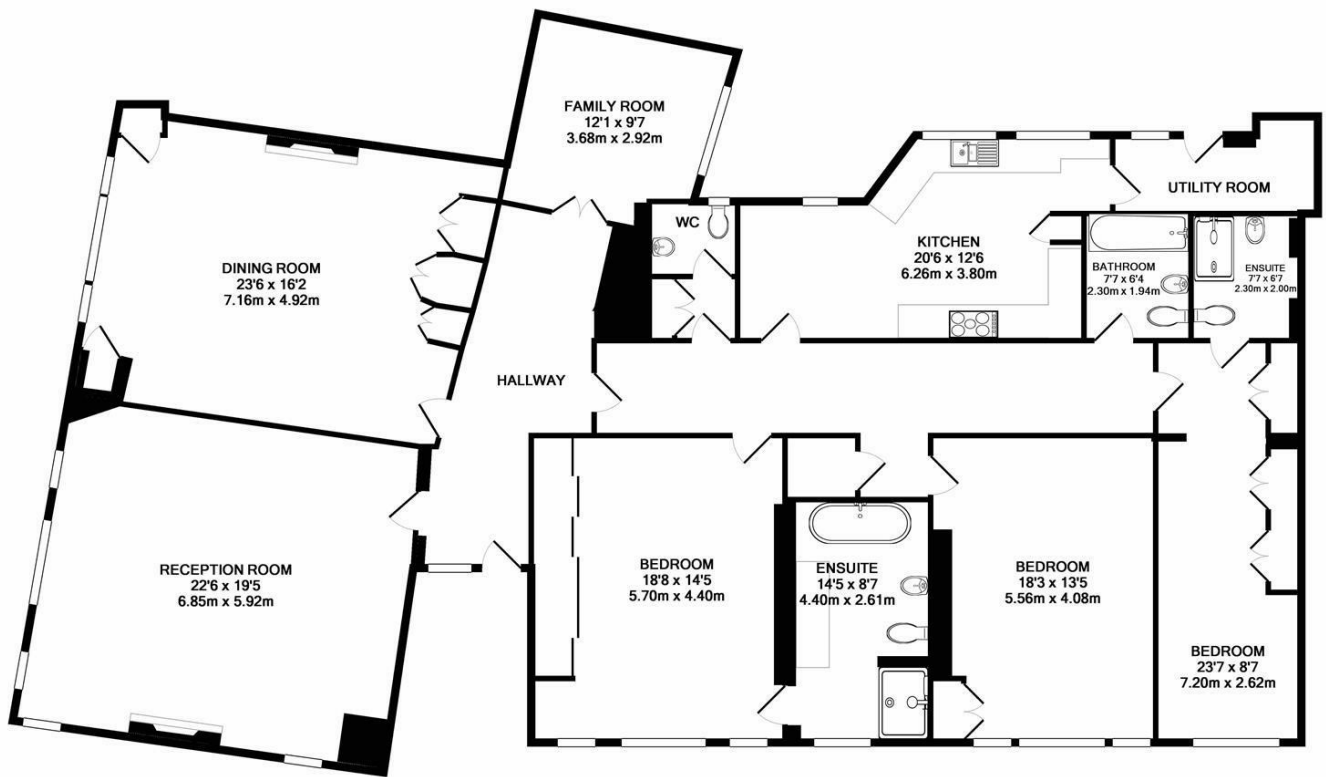


Harley House Brunswick Place London, NW1 4PR

£2,000

We are delighted to offer this charming four bedroom three bathroom apartment set on the first floor in one of Marylebone's most prestigious apartment blocks. Having recently been redecorated the apartment is offered in excellent order. The accommodation is Principal Bedroom with En-Suite Bathroom, Two Further Bedrooms, Two Family Bathrooms, Reception Room, Family Room, Study/Bedroom Four, Kitchen, Guest Cloakroom. Further benefits include beautiful wood floors in the entrance and reception rooms, large windows offering excellent light and a spacious feel with high ceilings and modern touches throughout.

Harley House is a luxury block with 24hr portorage and is located on the perimeter of Regents Park within minutes of Marylebone High Street. Public transport provides easy links to both the West End and City (Regents Park and Baker Street Underground Station (Bakerloo, Circle, Hammersmith & City, Jubilee & Metropolitan Lines).



HARLEY HOUSE NW1
TOTAL APPROX. FLOOR AREA 2567 SQ.FT. (238.5 SQ.M.)

Floorplans are for identification and guideline purposes only, not to scale. Compliant with RICS code of measuring practice. Floor plan supplied by CHA, Chalk Limited. Made with Metropix ©2018



85 - 87 BAYHAM STREET | LONDON | NW1 0AG

T: 0207 1234 152 | E: info@phillipsharrod.com | W: phillipsharrod.com

Energy Efficiency Rating		Environmental Impact (CO ₂) Rating	
Energy Efficiency Rating: B	Environmental Impact (CO ₂) Rating: 45	Energy Efficiency Rating: B	Environmental Impact (CO ₂) Rating: 45
Energy Efficiency Rating: A	Environmental Impact (CO ₂) Rating: 45	Energy Efficiency Rating: B	Environmental Impact (CO ₂) Rating: 45
Energy Efficiency Rating: C	Environmental Impact (CO ₂) Rating: 45	Energy Efficiency Rating: B	Environmental Impact (CO ₂) Rating: 45
Energy Efficiency Rating: D	Environmental Impact (CO ₂) Rating: 45	Energy Efficiency Rating: B	Environmental Impact (CO ₂) Rating: 45
Energy Efficiency Rating: E	Environmental Impact (CO ₂) Rating: 45	Energy Efficiency Rating: B	Environmental Impact (CO ₂) Rating: 45
Energy Efficiency Rating: F	Environmental Impact (CO ₂) Rating: 45	Energy Efficiency Rating: B	Environmental Impact (CO ₂) Rating: 45
Energy Efficiency Rating: G	Environmental Impact (CO ₂) Rating: 45	Energy Efficiency Rating: B	Environmental Impact (CO ₂) Rating: 45