



Legacy Building, Nine Elms
London SW11

GARTONJONES.COM



Legacy Building, Nine Elms London, SW11

£500 Per Week

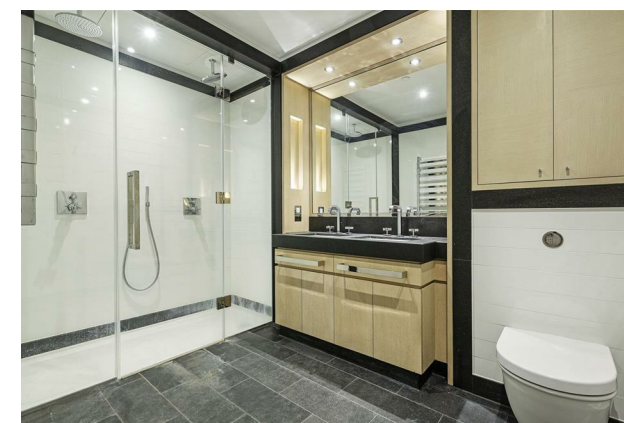
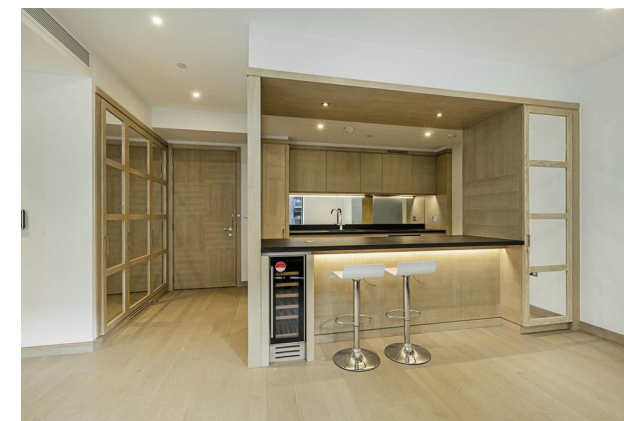
A new, spacious 1 double bedroom apartment of 597sq.ft (55.5sq.m.) in Embassy Gardens Phase 2. The apartment further benefits from an open plan reception room, a smart kitchen with a breakfast bar and Siemens integrated appliances, good storage throughout including built-in wardrobes to the bedroom and a utility cupboard housing a washer dryer. There is a luxury bathroom suite, parquet wood flooring and comfort cooling. For the residents' private use there is a 24-hour concierge, cinema screening room, library & lounge, business centre, yoga studio, gymnasium and a very cool indoor/outdoor swimming pool. Amenities such as the Black Cab Coffee Co as well as a Waitrose convenience store are located on-site but you are also close to a host of other local shops and restaurants and the transport links of Vauxhall are within walking distance.

- 597sq.ft (55.5sq.m)
- 1 Double Bedroom
- Luxury Bathroom Suite
- Open Plan Reception Room with a Smart Integrated Kitchen
- Balcony
- Residents Leisure Suite with Gymnasium & Swimming Pool
- Cinema & Digital Games Room, Library & Lounge
- Close to Local Shopping Facilities & Vauxhall Transport Links
- 24 Hour Concierge

GARTON JONES.COM

9 Albert
Embankment
London
SE1 7SP

Lettings:
+44 (0) 20 7735 1888
nineelms@gartonjones.com
www.gartonjones.com





Internal Area
55.5 sq m / 597 sq ft



