

# Ridgeway Gardens

Glastonbury, BA6 8ER

COOPER  
AND  
TANNER



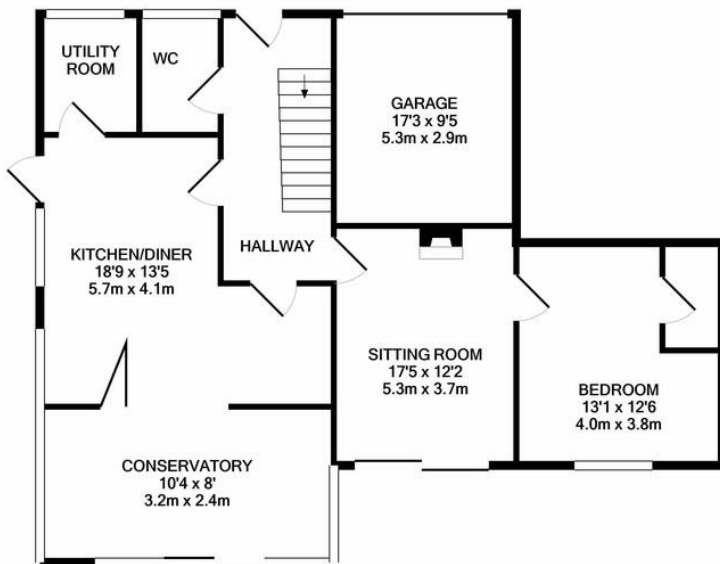
£445,000 Freehold

🛏️ 5 🛋️ 2 🚿 2 EPC B

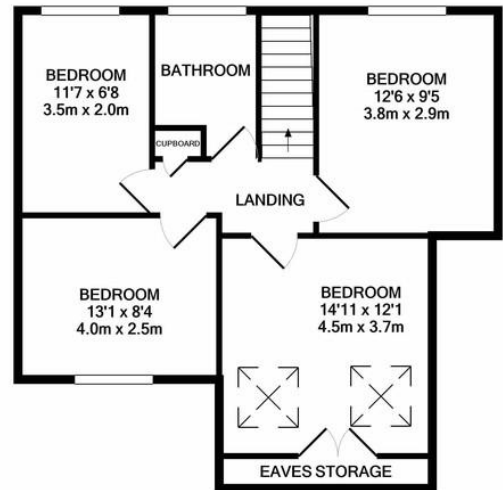
## Description

Enviably positioned home, affording South Westerly views towards an adjoining Coombe and Glastonbury Tor. The internal accommodation is in excellent condition having been modernised throughout. The ground floor accommodation comprises; a contemporary, South West facing kitchen/diner, a substantial sitting room (with wood burner), en-suite ground floor bedroom and a conservatory. There is the benefit of a separate utility room and cloakroom with WC. Four bedrooms and the family bathroom are located on the first floor. The two larger rooms both offer elevated views across to the Coombe and Glastonbury Tor. The beautifully kept gardens enjoy further views and includes a





GROUND FLOOR



1ST FLOOR

Whilst every attempt has been made to ensure the accuracy of the floor plan contained here, measurements of doors, windows, rooms and any other items are approximate and no responsibility is taken for any error, omission, or mis-statement. This plan is for illustrative purposes only and should be used as such by any prospective purchaser. The services, systems and appliances shown have not been tested and no guarantee as to their operability or efficiency can be given  
 Made with Metropix ©2020



## Features

- Elevated cul-de-sac position
- Wonderful SOUTH WESTERLY views
- Ground floor, EN-SUITE bedroom
- Oak doors and floors
- Light and spacious KITCHEN/DINER
- Landscaped gardens adjoining Bushycoombe
- Separate UTILITY ROOM
- Large south west facing terrace
- Modernised throughout by the current owner
- Solar Panels (owned)

## Local Information

- Council Tax Band D
- Tenure Freehold
- EPC Rating B

### GLASTONBURY OFFICE

Telephone 01458 831077

41 High Street, Glastonbury, Somerset, BA6 9DS

[glastonbury@cooperandtanner.co.uk](mailto:glastonbury@cooperandtanner.co.uk)

**COOPER  
AND  
TANNER**

Important Notice: These particulars are set out as a general outline only for the guidance of intended purchasers and do not constitute, nor constitute part of, an offer or contract. All descriptions, dimensions, reference to condition and necessary permissions for use and occupation, warranties and other details are given without responsibility and any intending purchasers should not rely on them as statements or representations of fact but must satisfy themselves by inspection or otherwise as to the correctness of each of them.

