

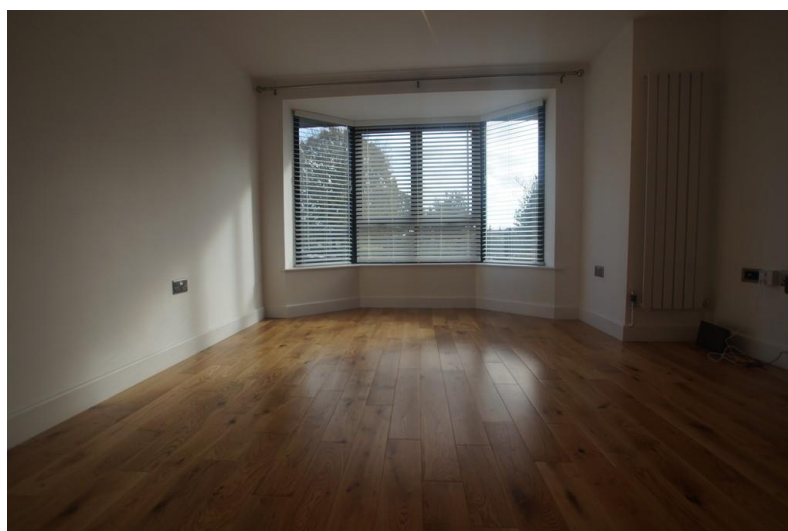


2 Parkview Apartments, Lincoln Road

North Hykeham, LN6 8NH

£650 pcm

A well presented two bedroom Ground Floor apartment in North Hykeham. With high specification fixtures and fittings, the apartment is located within a Gated Development and benefits from Entrance Hall, Lounge, Fitted Kitchen, Bedroom 1, Bedroom 2 and Family Bathroom. The property also benefits from allocated Parking.



ACCOMMODATION

The accommodation comprises; Communal Secured Entrance, Entrance Hall, high specification fitted Kitchen with integral white goods (fridge freezer, dishwasher, washing machine and tumble dryer) and breakfast bar to Lounge with bay window. Bedroom 1 with built-in wardrobes, Bedroom 2 with built-in wardrobe and high specification Bathroom. The property also benefits from double glazing and gas central heating. Viewing is required to appreciate the condition and standard of the accommodation on offer.

LOCATION

The property is located in the established residential area of North Hykeham, to the south of the Cathedral City of Lincoln. The property is well served by a range of local amenities including; shops, schools, supermarkets and leisure facilities. A full range of services and facilities are available in Lincoln City centre.

OUTSIDE

The property has a single allocated parking space within the communal parking area.

CHARGES TO TENANTS

There are no application fees payable. You will be required to pay a Holding Deposit equal to one weeks rent to secure the property. More information on charges to Tenants can be found on our website; <https://mundys.net/help/lettings-fees-information-for-tenants/>

VIEWING

By prior appointment through Mundys.

RENT AND DEPOSIT

The asking Rent for the property is £650PCM, and the Tenancy Deposit is £750.

- Ground Floor Apartment
- Gated Development
- Desirable Location
- 2 Bedrooms
- High Specification Fittings
- Allocated Parking Space
- Sorry, No Pets
- Appliances Included
- EPC Energy Rating - C
- Viewing Recommended



Agents Note: Whilst every care has been taken to prepare these sales particulars, they are for guidance purposes only. All measurements are approximate and for general guidance purposes only and whilst every care has been taken to ensure their accuracy, they should not be relied upon and potential buyers are advised to recheck the measurements.