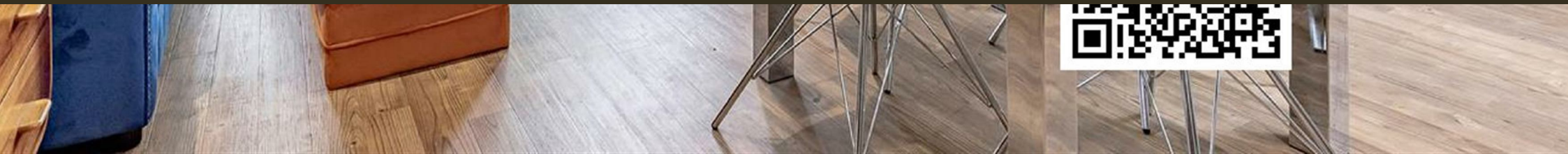




Gladwin Tower, London
Nine Elms SW8

GARTON JONES.COM



Gladwin Tower, London Nine Elms, SW8

GARTON JONES.COM

9 Albert
Embankment
London
SE1 7SP

Sales +44 (0) 20 7735 1888
nineelms@gartonjones.com
www.gartonjones.com

£780,000 Leasehold

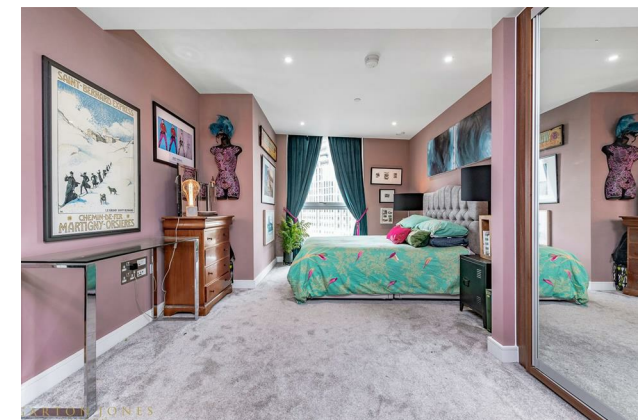
A spacious 2 double bedroom apartment of approx. 815.69sq.ft in Gladwin Tower, located on the 5th floor within the Nine Elms Point development by Barratt London, close to the River Thames and the new US Embassy building in Nine Elms. This property benefits from an open plan reception room with a smart kitchen with AEG integrated appliances including a wine cooler, there is a private balcony, 2 luxury bathrooms (1 en-suite) and good storage including a utility cupboard housing an AEG washer/dryer and fitted wardrobes to both bedrooms. Nine Elms Point has a 24-hour concierge, residents gym, business suite and a cinema screening room. You will be located a few minutes' walk from the excellent transport services of Vauxhall including rail, tube and bus links as well as a river taxi pier at St George Wharf and there will be a large onsite Sainsbury's supermarket to complement a good selection of local shopping facilities and restaurants.

Service Charge: TBC

Ground Rent: TBC

EPC certificate available on request.

- 815.69sq.ft
- 2 Double Bedrooms
- 2 Bathrooms (1 En-Suite)
- Open Plan Reception Room
- Kitchen with AEG Integrated Appliances
- Large Private Balcony
- 24 Hour Concierge
- Residents Gym, Cinema Screening Room & Business Lounge
- Close to The Excellent Transport Links of Vauxhall
- Neighbouring the site of the Forthcoming Nine Elms Tube Station





TOTAL AREA
815.69 sq ft (75.78 sq m)

