



7 Cunard Crescent, London

Offers In The Region Of £325,000



the advantage of experience



- Recently fitted kitchen & bathroom
- Juliette balcony
- Well maintained gardens
- Double glazing
- Spacious reception room with juliet balcony
- Quiet location



For more images of this property please visit havilands.co.uk



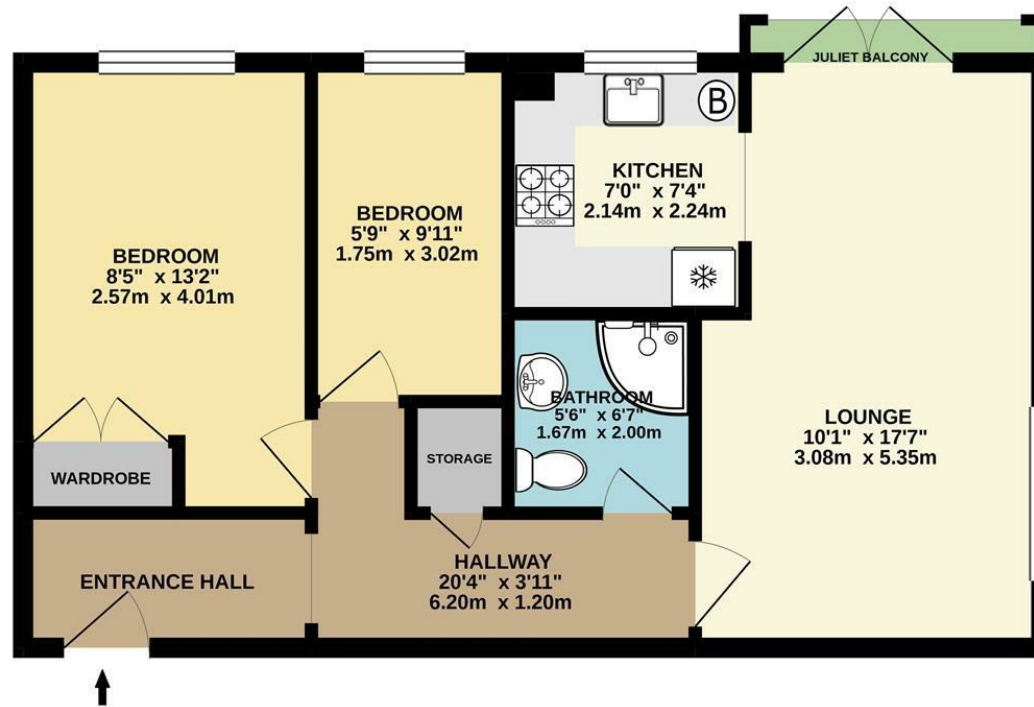
Havilands are pleased to present this spacious and stylish 2-bedroom purpose built flat, in a discreet turning on the Winchmore Hill/Bush Hill Park border.

This contemporary flat offers accommodation in excellent condition throughout, an internal viewing is highly recommended. Both the kitchen and bathroom have been recently fitted and the building benefits from double glazing. There is a Juliette balcony overlooking the well maintained communal gardens & there is parking available on the development.

Located approximately a 15 minute walk to Enfield Town, offering a range of shopping facilities. Grange Park Station is under a mile away which serves Highbury & Islington (Victoria) & Moorgate in around 30 minutes. Early viewing advised.

For more images of this property please visit havilands.co.uk

TOP FLOOR
507 sq.ft. (47.1 sq.m.) approx.



AISLABIE HOUSE, 7 CUNARD CRESCENT, N21 2TL
TOTAL FLOOR AREA : 507 sq.ft. (47.1 sq.m.) approx.
Made with Metropix ©2020

havilands | 020 8886 6262
come by and meet the team
30 The Green, Winchmore Hill, London, N21 1AY