



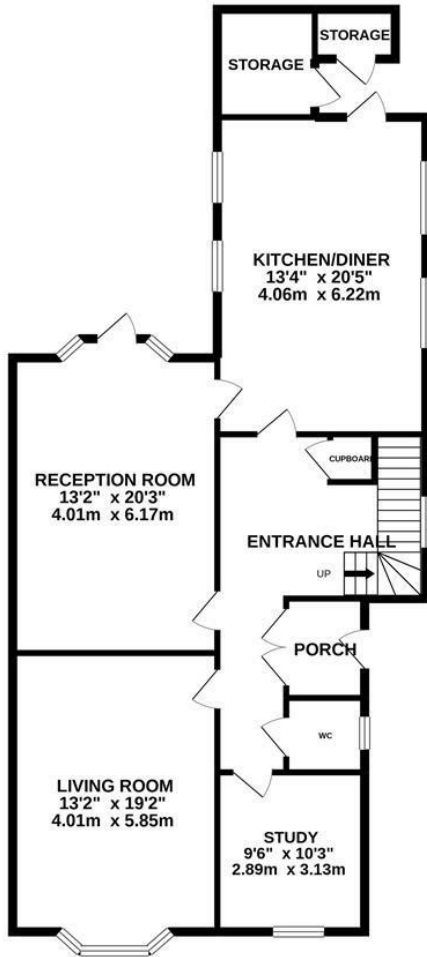
Lower Park Road, Hastings TN34 2LA

Offers in excess of £625,000

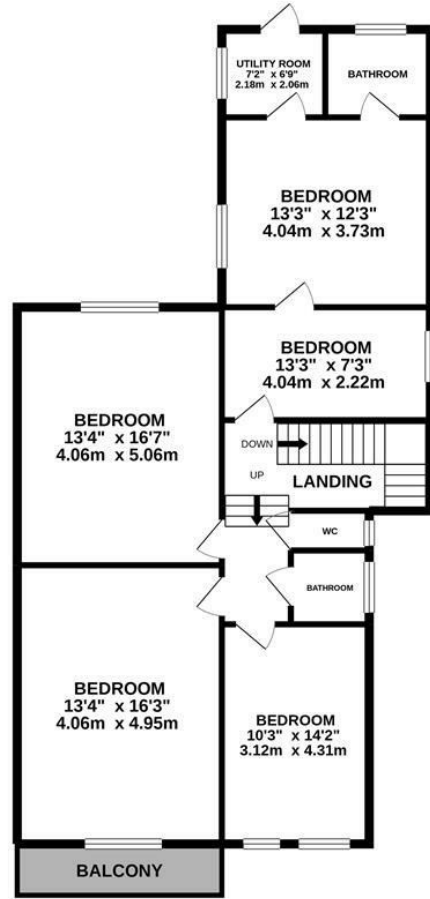


Attractive FIVE BEDROOM Victorian house set in an unrivalled location adjacent to ALEXANDRA PARK with a beautiful outlook across Hastings. This fantastic home is ideally positioned just a short stroll from Hastings Town Centre with its mainline railway station and beach. Spanning two storeys the accommodation here enjoys GRAND PROPORTIONS and a wealth of STUNNING ORIGINAL FEATURES along with a family friendly rear garden. The ground floor is arranged as a BAY FRONTED LIVING SPACE, a second reception area which measures 20'3 x 13'2 along with a separate study. The WELL PROPORTIONED EAT IN KITCHEN sits at the rear of the property and offers plenty of space for a full dining table and access outside. There are FIVE DOUBLE BEDROOMS on the first floor, two of which interlink creating the PERFECT SPACE FOR THOSE SEEKING DUAL ACCOMMODATION, it enjoys a utility space with a rear door leading out to the garden as well as a bathroom. There is also a family bathroom and a separate cloakroom on this floor. The rear garden is a particular feature, it's planted with tropical trees and enjoys a courtyard with stairs rising to a LEVEL EXPANSE OF LAWN. This well presented family home enjoys generous proportions and is not one to be missed.

GROUND FLOOR
1180 sq.ft. (109.6 sq.m.) approx.



1ST FLOOR
1074 sq.ft. (99.8 sq.m.) approx.



TOTAL FLOOR AREA: 2254 sq.ft. (209.4 sq.m.) approx.

Whilst every attempt has been made to ensure the accuracy of the floorplan contained here, measurements of doors, windows, rooms and any other items are approximate and no responsibility is taken for any error, omission or mis-statement. This plan is for illustrative purposes only and should be used as such by any prospective purchaser. The services, systems and appliances shown have not been tested and no guarantee as to their operability or efficiency can be given.
Made with Metropix ©2020

