



22 Ocotal Way
Swindon, SN1 2PD

STRAKERS

22 Ocotal Way, Swindon, SN1 2PD

*****NO CHAIN**FOUR PARKING SPACES and GARAGE**This THREE/FOUR BEDROOM end terrace family home offers FLEXIBLE LIVING ACCOMMODATION and benefits from a fitted KITCHEN/DINING ROOM, master bedroom with fitted wardrobes and a number of UPGRADES added when the property was built.**

- Spacious Family Home
- Sought After Location
- Flexible Accommodation
- Garage & Parking for 4 Vehicles
- Unfurnished
- No Pets
- Available Early October
- £1,250 pcm

£340,000



Description

*****NO CHAIN***FOUR PARKING SPACES and GARAGE**This THREE/FOUR BEDROOM end terrace family home offers FLEXIBLE LIVING ACCOMMODATION and benefits from a 17FT KITCHEN/DINING ROOM, master bedroom with fitted wardrobes and a number of UPGRADES added when the property was built.**

Situation

Located on Ocotal Way with local amenities close by including doctors surgery and a 24 hour supermarket. The town centre is conveniently accessed and offers a wide variety of shops, pubs, clubs, restaurants and a diversity of culture. Mainline railway links to London Paddington and Bristol plus access to Junction 16 of the M4 c.4 miles away makes this location very sought after.

Property Information

Tenure : Freehold

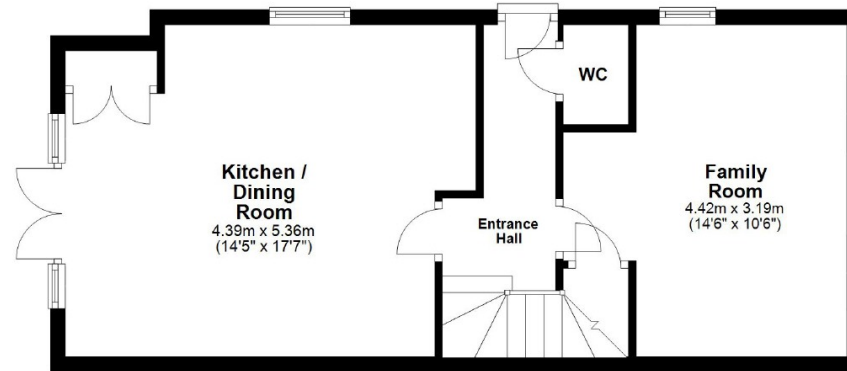
Gas Central Heating

Council Tax Band 'D'

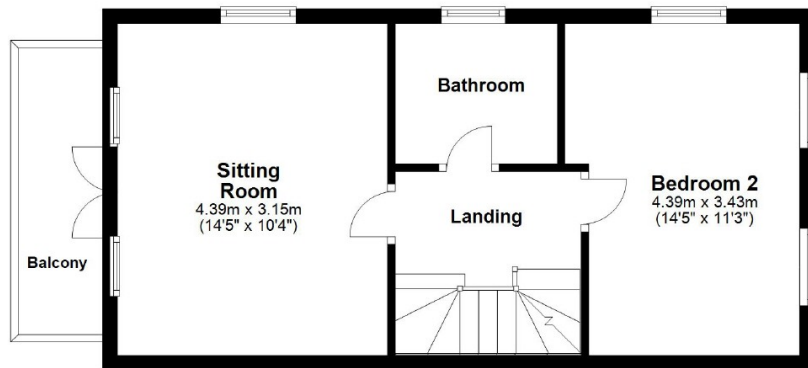
EPC 'B'



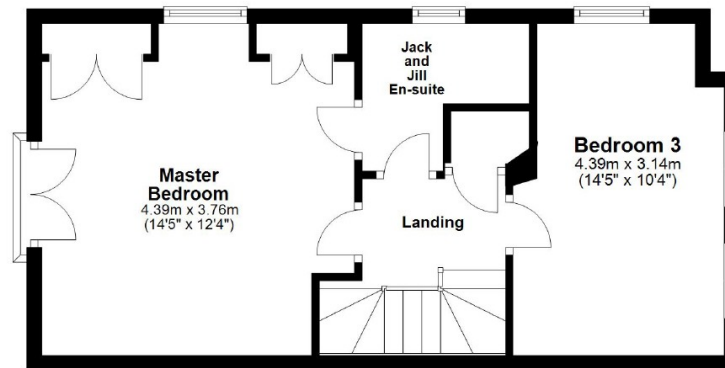
Ground Floor



First Floor



Second Floor



Unit B, Millgrove House, 59 Millgrove Street, Redhouse, Swindon,
Wiltshire, SN25 2FW
Tel: 01793 683144
Fax:

www.strakers.co.uk

■ Chippenham
■ Corsham

■ New Homes
■ Malmesbury

■ Swindon
■ Devizes

■ Auction
■ Lettings