



Meadow Rise  
Ingatestone Essex CM4 0QY  
£485,000

## Meadow Rise, Ingatestone, Essex CM4 0QY

Situated within walking distance of the centre of the picturesque village of Blackmore is this deceptively spacious three bedroom semi-detached family home. Having been thoughtfully maintained the home offers excellent well appointed accommodation, with potential (subject to planning permissions being obtained) to extend if required.

Approached by a good sized driveway, providing parking for several vehicles as well as giving access to the attached garage and gated access to the rear gardens.

On entering you are welcomed by a bright and convenient entrance porch with fitted storage cupboards, ideal for cloaks and family storage. Moving through the entrance hallway, there is a convenient ground floor cloakroom. The home flows around to the rear where there is a large lounge with picture window overlooking the rear gardens. Open from here into the kitchen/dining room again with patio doors opening on to and overlooking the rear gardens. The kitchen in turn leads on from the dining area and has been recently refitted with a range of high quality contemporary kitchen. Having a range of wall and base units, fitted appliances, complementary worksurfaces and coordinated flooring.

To the first floor there is a good size landing, three bedrooms with the master having double fitted wardrobes and both this and bedroom two enjoying views across the rear gardens. All bedrooms are served by the family shower room, having a walk-in shower cubicle and separate wc.

The home also has a very good size rear garden, which is unoverlooked, commencing with an imprinted patio. A pathway continues through the garden with a central lawned area and large well stocked flower beds to either side.

It is rare that properties in such a quiet and sought after location become available within walking distance of the centre of this highly regarded village that we recommend arranging an professional accompanied viewing with Tania at your earliest convenience.





**ENTRANCE HALL**

**CLOAKROOM**

**LOUNGE**

15'1 x 11'10 (4.60m x 3.61m)

**KITCHEN/DINING ROOM**

17'11 x 8'5 (5.46m x 2.57m)

**GARAGE**

18'1 x 8'4 (5.51m x 2.54m )

**STAIRS LEADING TO**

**BEDROOM ONE**

13'11 x 11'6 (4.24m x 3.51m)

**BEDROOM TWO**

11'11 x 11'11 (3.63m x  
3.63m)

**BEDROOM THREE**

10'7 x 8'4 (3.23m x 2.54m)

**SHOWER ROOM**

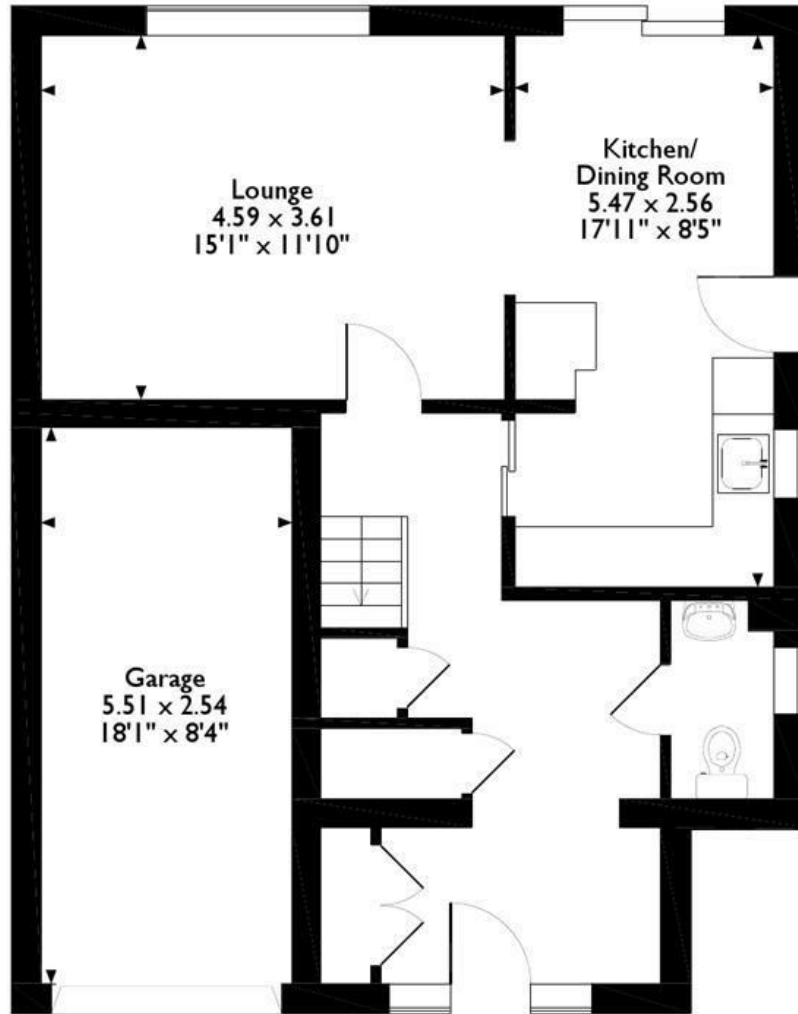
**CLOAKROOM**



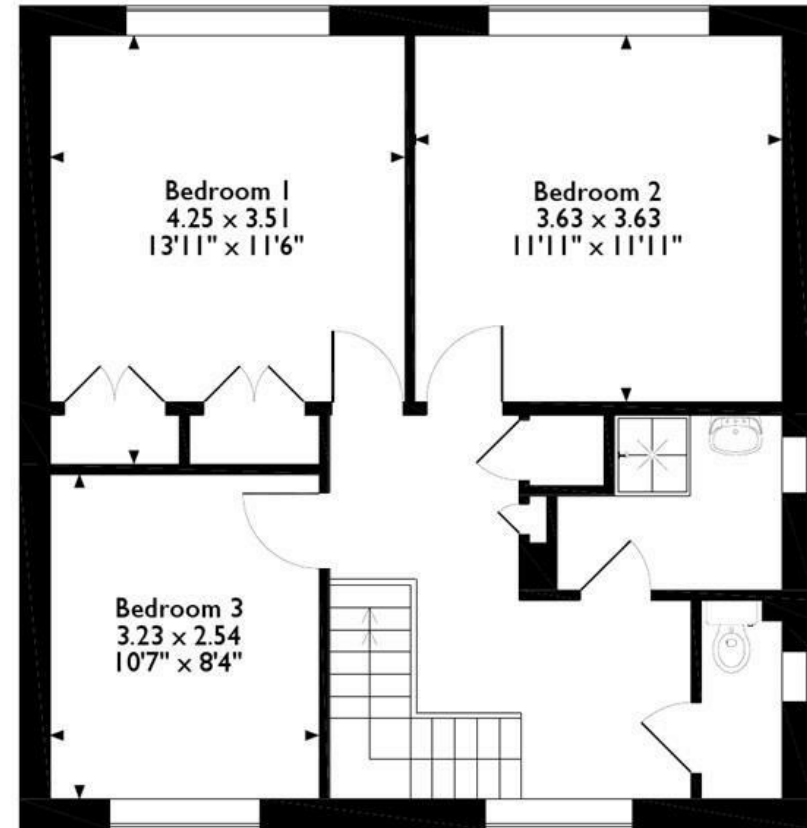


# Meadow Rise Blackmore, Ingatestone, Essex

Approximate Gross Internal Area  
Main House = 105 Sq M / 1128 Sq Ft  
Garage = 14 Sq M / 147 Sq Ft

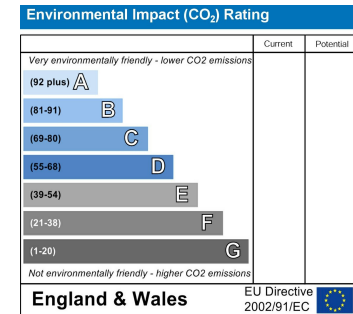
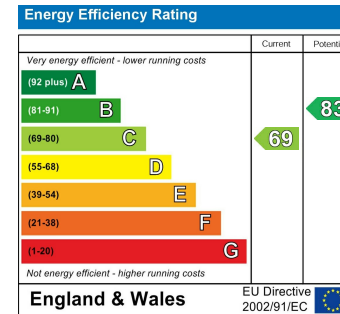
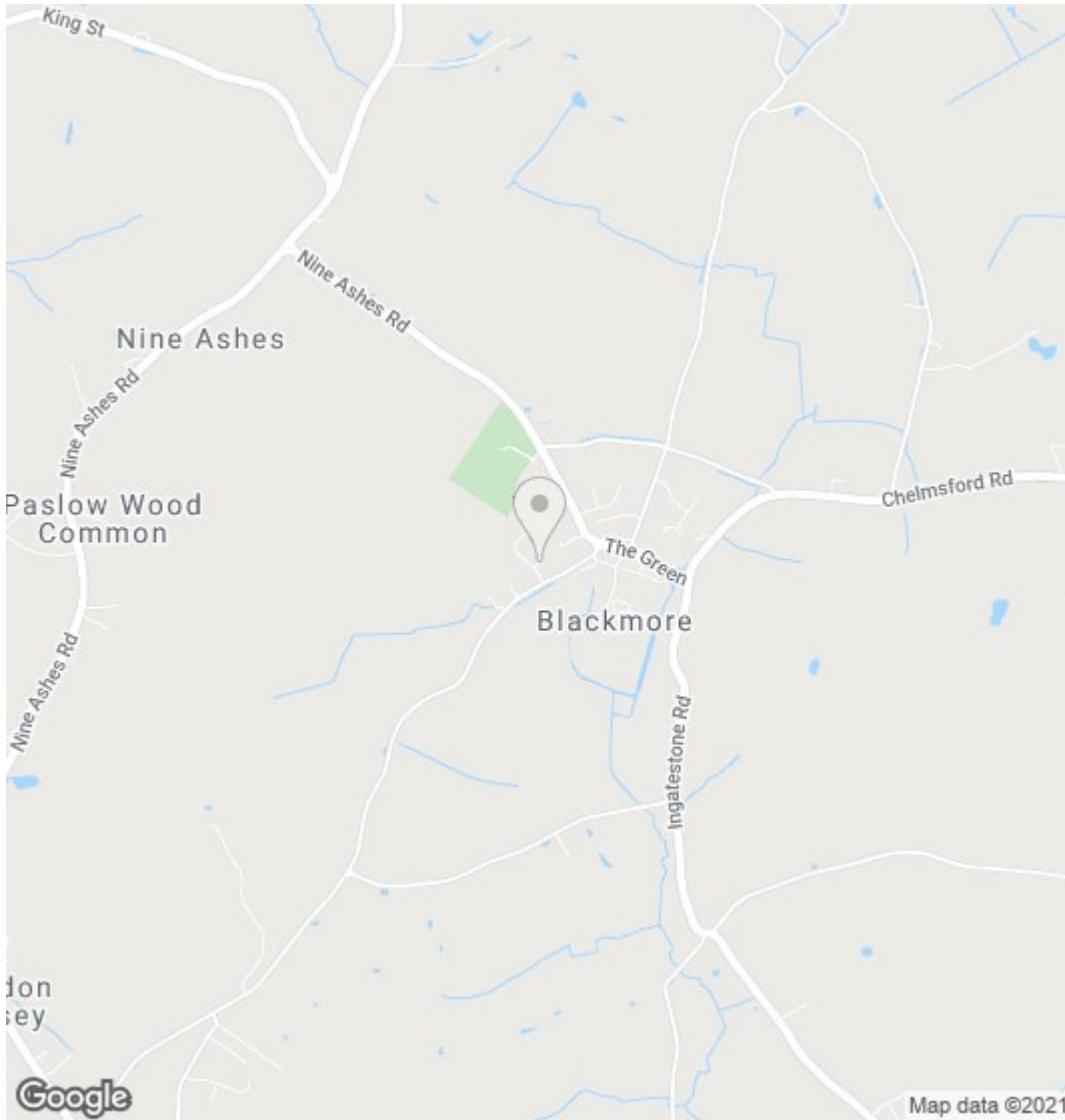


**Ground Floor**



**First Floor**

Please note that the location of doors, windows and other items are approximate and this floorplan is to be used for illustrative purposes only. Unauthorized reproduction is prohibited.



**PLEASE CALL 01277 355005 TO ARRANGE A VIEWING**  
**[www.walkersestates.co.uk](http://www.walkersestates.co.uk)**

**INDEPENDENT ESTATE AGENTS - VALUATIONS WITH NO OBLIGATION – PROFESSIONAL SERVICE**

These particulars do not constitute, nor constitute any part of an offer or contract. All measurements are given as a guide, no liability can be accepted for any errors arising therefrom. No responsibility is taken for any other error, omission, or mis-statement in these particulars. Walkers Village & Country Homes Limited do not make or give, whether in these particulars, during negotiations or otherwise, any representation whatsoever in relation to this property.

