



- Two Double Bedrooms
- Gas Central Heating
- Upper Flat
- Communal Gardens

## Kenilworth Court, Washington, Tyne and Wear

£25,000

Two bedroom upper flat in the Marlborough Park complex, well situated in the private side of the complex with the added bonus of communal maintenance. Briefly comprising lounge with balcony, kitchen, bathroom, two bedrooms with communal gardens.



## Property Description

SEVEN KEYS welcome this two bedroom flat to the market. Well situated in the private side of the complex with the added bonus of communal maintenance. Briefly comprising lounge with balcony, kitchen, bathroom, two bedrooms with communal gardens.

Book your viewing online today at [SevenKeys.co.uk](http://SevenKeys.co.uk).

### LIVING ROOM

Living room area with laminate flooring and neutral décor. Double glazed window and radiator.

### KITCHEN

Fitted kitchen units with contrasting worktop. Complete with sink/drain, oven/hob and space for additional appliances. Laminate flooring and neutral décor.

### BEDROOM ONE

Good sized double bedroom with fitted wardrobes offering plenty of storage. With a neutral carpet and décor. Complete with double glazed window and radiator.

### BEDROOM TWO

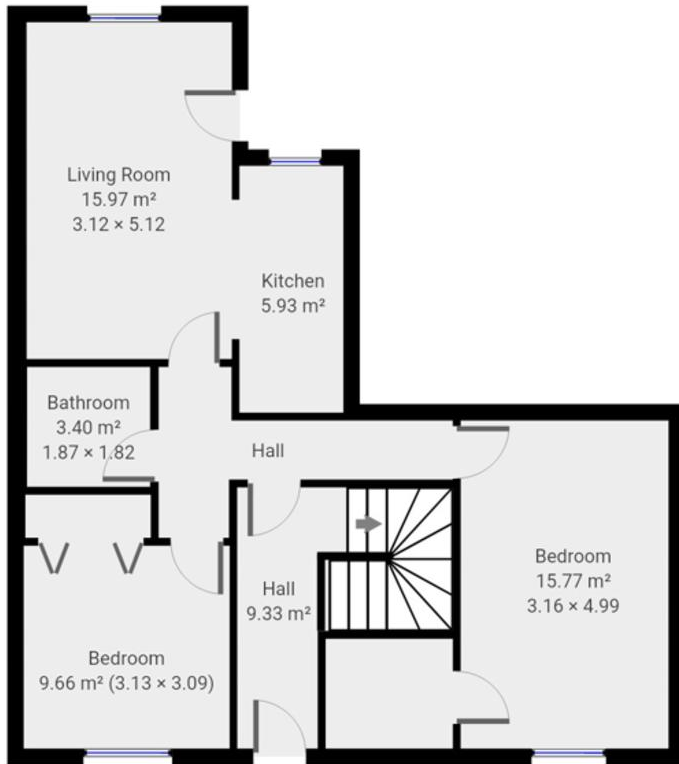
Another double bedroom. As before with neutral décor and carpet. Complete with double glazed window and radiator.

### BATHROOM

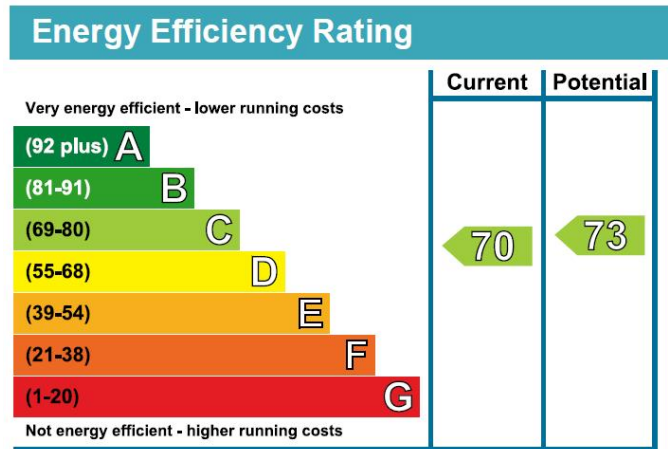
Fitted bathroom suite. Comprising of panelled bath with shower attachment, vanity unit and wash basin, low level toilet and vinyl flooring.







THIS FLOORPLAN IS PROVIDED WITHOUT WARRANTY OF ANY KIND. SEVEN KEYS DISCLAIMS ANY WARRANTY INCLUDING, WITHOUT LIMITATION, SATISFACTORY QUALITY OR ACCURACY OF DIMENSIONS.



Boston House, Unit 2 Fifth Avenue,  
Team Valley Trading Estate,  
Gateshead, Tyne And Wear, NE11  
0HF

[www.sevenkeys.co.uk](http://www.sevenkeys.co.uk)  
0191 4971797  
[info@sevenkeys.co.uk](mailto:info@sevenkeys.co.uk)

Agents Note: Whilst every care has been taken to prepare these particulars, they are for guidance purposes only. All measurements are approximate and for general guidance purposes only and whilst every care has been taken to ensure their accuracy, they should not be relied upon and potential buyers/tenants are advised to recheck the measurements